

ART PORTFOLIO

for

FEBRUARY 1926

Maurice Braun

Roy Brown, A. N. A.

Emil Carlsen, N. A.

E. W. Deming

Paul Dougherty, N. A.

Ben Foster, N. A.

Carl Lawless

Hayley Lever, A. N. A.

Jonas Lie, N. A.

Ivan Olinsky, N. A.

Gardner Symons, N. A.

Alexander H. Wyant, N. A.

THE MACBETH GALLERY

15 East 57TH Street

New York City

THIS PORTFOLIO, the fifth in our series, reproduces pictures for the most part received by us during the month of February. One or two are from our own stock; the rest, direct from the artists' studios.

Until April 5th, these will be reserved exclusively for inspection by out-of-town buyers, according to the terms of our recent announcements. Each picture is, of course, an original and unique work, so that, should more than one person desire to see the same picture, it must be sent to the first applicant.

Designate by letter, or reserve by wire to be followed by a letter of confirmation, any picture reproduced here that would seem to meet your requirements. Persons not known to us are asked to give one bank and one mercantile reference, together with *explicit express address*.

You are put to no expense, either for transportation or insurance. All we ask is that, if the picture does not come up to expectations, you will use the greatest possible care in re-packing, and that you will return it promptly.

The Portfolio for any given month appears about the middle of the following month. The March Portfolio, for example, will be mailed about April 15.

WILLIAM MACBETH, INC.



MAURICE BRAUN

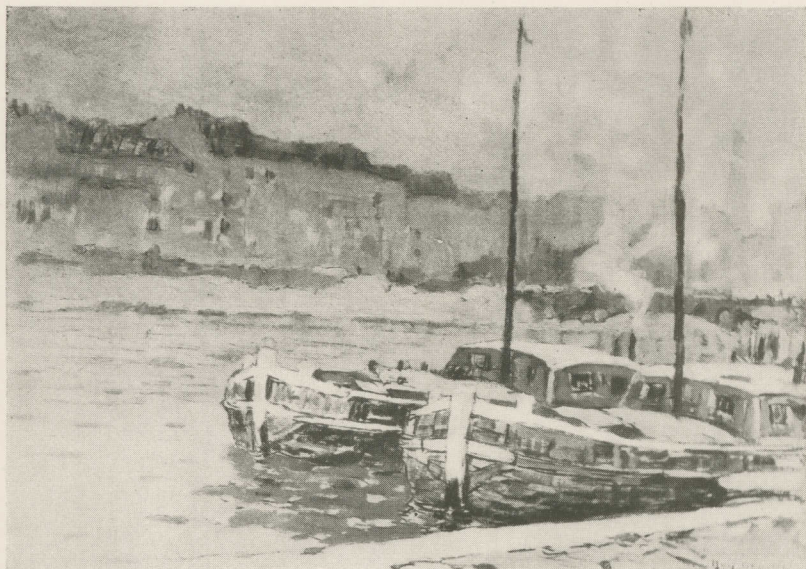
NEW JERSEY HILLS, AUTUMN

The two large oaks in the right foreground, have already turned a russet-brown, but there is still a tinge of green in the more sheltered foliage and on the distant hillside. In the center foreground there are brilliant yellows, while along the forest path leading into the picture there are greys and deep browns which lend an air of mystery to the valley beyond

Size 20" x 24"

Price \$300

MACBETH GALLERY
15 EAST 57th STREET
NEW YORK CITY



ROY BROWN, A.N.A.

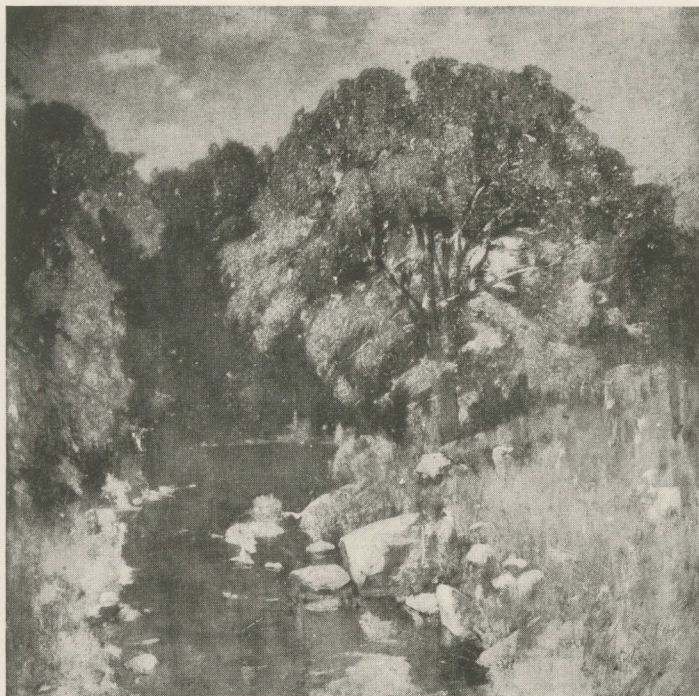
BARGES

Two picturesque French barges, one grey and blue, the other brown and green, are seen across the edge of the stone wharf. Buildings in greens and blues are felt rather than seen across the river, and to the right smoke partly obscures the approach to the bridge. The river is a steel-blue, reflecting a blue-grey sky seen through a haze of clouds and white smoke

Size 12" x 16"

Price \$250

MACBETH GALLERY
15 EAST 57th STREET
NEW YORK CITY



EMIL CARLSEN, N.A.

THE TROUT BROOK

Here is a canvas in which Carlsen's beautiful grey-greens predominate. Sunlight flecks the heavy foliage of the great elm at the right, which is seen in relief against dark shadows in the woods beyond. In imagination we round the point to the upper reaches of the brook or climb the distant bank into the cool shadows of the woods. The brook reflects the green of the trees and a blue sky with fleecy clouds

Size 34" x 34"

Price \$2500

MACBETH GALLERY
15 EAST 57th STREET
NEW YORK CITY



E. W. DEMING

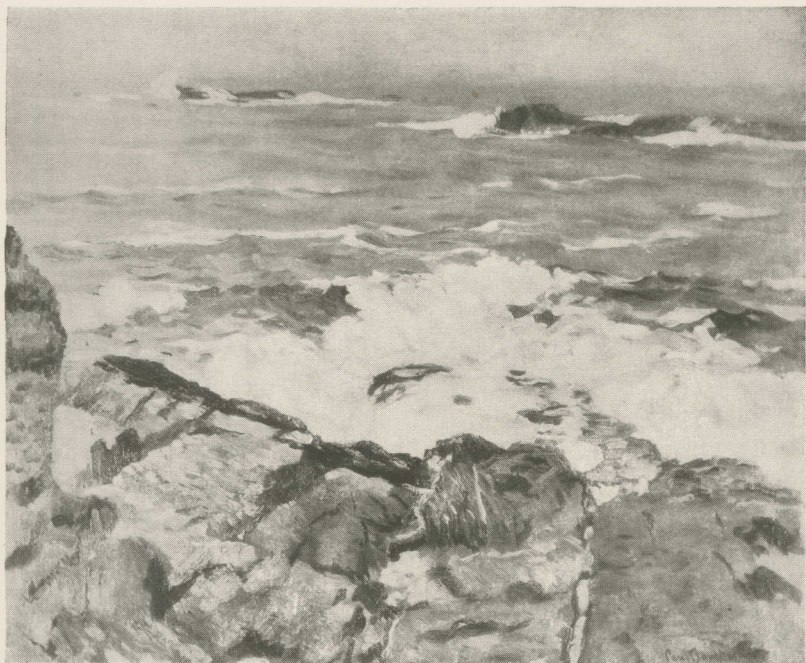
THE INDIAN SCOUT

Deming once more gives us a glimpse of the West that is past, of which he is a master. The Cheyenne outpost, brown as to both man and horse, is sharply silhouetted against a brilliant landscape flooded by the desert sun. A distant peak rises white against a sky in which a few small clouds float lazily. Bright colored mesas are seen across the river at the right

Size 12" x 16"

Price \$250

MACBETH GALLERY
15 EAST 57th STREET
NEW YORK CITY



PAUL DOUGHERTY, N.A.

LOW TIDE

Rollers from a recent storm break on the brown rocks in the foreground and on the outer reefs in a turmoil of white water. The sea is blue inshore toning to a purple-grey in the distance. The sky is still overcast with varying shades of grey clouds and meets the sea in a grey mist. One of the finest of Dougherty's small panels

Size 21" x 26"

Price \$900

MACBETH GALLERY
15 EAST 57th STREET
NEW YORK CITY



BEN FOSTER, N.A.

IN OCTOBER

Foster left behind him few more cheerful pictures than this sunny day at the edge of the woods. The color effect is brown, but the foreground is a subdued, moist green, and the sky a beautiful cool blue, reflected here and there in the brooklet that winds down from the forest

Size 30" x 30"

Price \$1200

MACBETH GALLERY
15 EAST 57th STREET
NEW YORK CITY



CARL LAWLESS

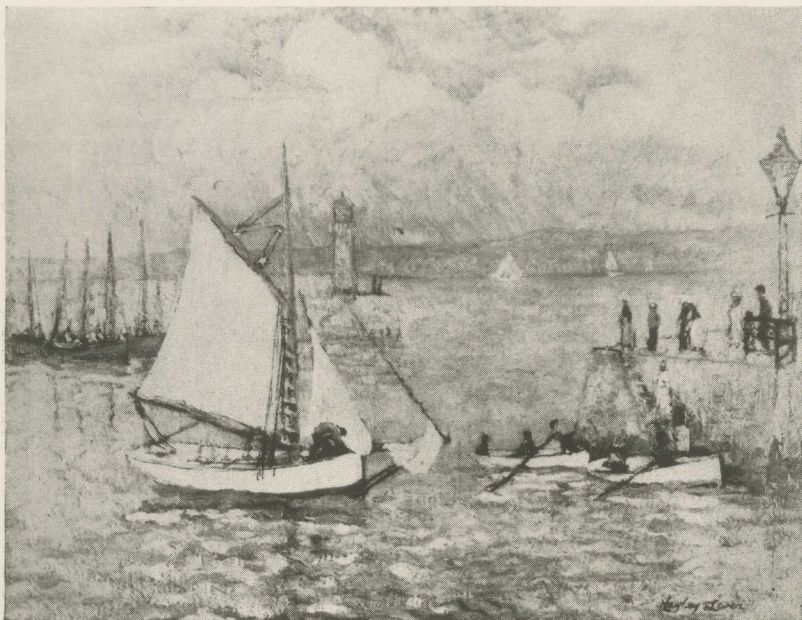
AFTER SERVICES

The old brown colonial church is seen through the last falling flakes of a heavy snow storm. The figures are cleverly spotted in decorative design and they and the colored sled bodies make an interesting pattern. The low sleigh to the right is a bright green; that in the center, red; and the one to the left a dark blue. There is a pleasing kaleidoscopic effect of reds, purples, and greens throughout the whole composition

Size 30" x 30"

Price \$450

MACBETH GALLERY
15 EAST 57th STREET
NEW YORK CITY



HAYLEY LEVER, A.N.A.

TWO PIERS

This attractive little picture follows the series of St. Ives subjects by which Lever is represented in some of our foremost museums. It is bright in key with a sparkle of sunlight on the blue-green water, on the white sloop and row-boats, and on the light brown piers. There is a row of purple hills in the distance, over which hang great banks of cream-colored clouds against a blue sky

Size 14" x 18"

Price \$300

MACBETH GALLERY
15 EAST 57th STREET
NEW YORK CITY



JONAS LIE, N.A.

EVENING

This fine canvas was one of the best liked in Mr. Lie's recent exhibition of new Norwegian landscapes. It is tremendous in its feeling and has to a remarkable degree the great depth of water that Lie gets so well. Against this deep blue-green, the sails make rich notes of brown, which, in darker tones, are repeated in the lower hills beyond. In the distance the cliffs are purple with shadowed snow patches. To the right a brown peak rises against a bright cream sky

Size 20" x 30"

Price \$900

MACBETH GALLERY
15 EAST 57th STREET
NEW YORK CITY



IVAN OLINSKY, N.A.

IN THE STUDIO

An interior composition with unusual charm. The scarf of the auburn-haired seated figure is green with a blue border, which is repeated in darker tones in the window curtains. At the right is a green-gold screen over which green, orange and red materials are informally draped. The standing figure wears a light rose kimono, and a green breakfast set on which an orange lies completes the composition. A beautiful quality of light permeates the group

Size 25" x 30"

Price \$1000

MACBETH GALLERY
15 EAST 57th STREET
NEW YORK CITY



GARDNER SYMONS, N.A.

THE RED BARN

A bright day follows a heavy fall of snow. Only a few vehicles have tracked through the road past the little settlement. The barn is red, beyond it a greenish-yellow house with the proverbial narrow New England porch. An evergreen rises behind the house, and across the road maples have turned rich shades of brown which are echoed in the clumps of trees seen against the snows of the distant hills

Size 20" x 25"

Price \$1000

MACBETH GALLERY
15 EAST 57th STREET
NEW YORK CITY



ALEXANDER H. WYANT, N.A.

SUNSET THROUGH THE WOODS

Here is one of the best little "Sunset Wyants" it has been our privilege to offer. The foreground is a rich mellow green, with occasional pools reflecting the golden light which filters through the overhanging trees. The sky at the horizon, seen through the woods, is a cool cream-yellow. This charming little canvas is characteristic of the best period of Wyant's work

Size 12" x 16"

Price \$2500

MACBETH GALLERY
15 EAST 57th STREET
NEW YORK CITY

Box 024
M/21
ART PORTFOLIO

for

MARCH 1926

Carle J. Blenner

Belmore Browne

John F. Carlson, N. A.

Charles H. Davis, N. A.

Charles Warren Eaton

Charles W. Hawthorne, N. A.

Robert Henri, N. A.

H. Dudley Murphy

Hobart Nichols, N. A.

E. H. Potthast, N. A.

E. W. Redfield

F. Ballard Williams, N. A.

THE MACBETH GALLERY

15 East 57TH Street

New York City

44060

THIS PORTFOLIO, the sixth and last in our present series, reproduces nine pictures just received and three which have been in our recent exhibitions. All of these are the property of the artists and are to be sold for them at their studio prices.

Until May 8 these will be reserved exclusively for inspection by out-of-town buyers, according to the terms of our recent announcements. Each picture is, of course, an original and unique work, so that, should more than one person desire to see the same picture, it must be sent to the first applicant.

Designate by letter, or reserve by wire to be followed by a letter of confirmation, any picture reproduced here that would seem to meet your requirements. Persons not known to us are asked to give one bank and one mercantile reference, together with *explicit express address*.

You are put to no expense, either for transportation or insurance. All we ask is that, if the picture does not come up to expectations, you will use the greatest possible care in re-packing, and that you will return it promptly.

Special attention is called to the enclosed circular letter. A response to it will be appreciated.

WILLIAM MACBETH, INC.



CARLE J. BLENNER

POPPIES AND SNOWBALLS

Perfect specimens of large oriental poppies, in brilliant shades of reds, ranging from deep purple to burnt orange, form the center of interest in this decorative panel. The glazed jar is blue, shading to green; and the white snowballs with their brilliant green leaves, fill in the composition against a background of variegated color

Size 24" x 20"

Price \$300



BELMORE BROWNE

RIISING WATERS

A cold, clear morning in the Canadian Rockies has been beautifully rendered by Belmore Browne in this, one of his most delightful small canvases. River and sky are cool blue. The low hill beyond the Bow is brown, in contrast to the grey rocks, dark to the left and light on the right, which frame the composition. The cloud shadows seem to travel across the snows of the distant peaks while we look at them

Size 18" x 24"

Price \$350

MACBETH GALLERY
15 EAST 57th STREET
NEW YORK CITY



JOHN F. CARLSON, N.A.

GUARDIANS OF THE BROOK

In this we have a worthy successor to the Snow-Mantled Highway sold from our December Portfolio. While the dominant tone of this canvas is the grey of a winter's day in the woods, there is more color than is usually found in such a picture. There are subtle shades of tan, rose and green in the suggestion of foliage still on the trees and there are rich greens in the firs in the right and left foreground. A misty veil all but hides the distant woods above a rocky ledge

Size 25" x 30"

Price \$900

MACBETH GALLERY
15 EAST 57th STREET
NEW YORK CITY



CHARLES H. DAVIS, N.A.

WINTER MORNING

Quite as fine as his summer canvases, if not as familiar to the public, Davis's snow pictures come along at infrequent intervals. He paints the poetry of snow rather than its rigor, and this little example is one of his best. The eye is led to the hazy fields in the background by the water-course starting in the right foreground and winding up past the little house in the middle distance. The fine old elm at the left is a splendid note of balance in the composition. The prevailing tone is pearly grey with notes of brown, lavender and red

Size 17" x 21"

Price \$900

MACBETH GALLERY
15 EAST 57th STREET
NEW YORK CITY



CHARLES WARREN EATON

THE GOLDEN GLOW

This is one of Eaton's sunset effects, seen through the pine woods that he loves so well. We are looking directly into the sunset, and the pines are blurred with the resulting golden haze. The sky is very brilliant, with sharp notes of bright golden pink in the clouds at the top of the picture

Size 24" x 20"

Price \$500

MACBETH GALLERY, 15 EAST 57th STREET, NEW YORK CITY



CHARLES W. HAWTHORNE, N.A.

NUDE

In this little Nude, we offer one of Hawthorne's most charming pictures. The flesh tints are beautifully rendered. Against the dark blue of the background and the brown of the immediate foreground, they have almost the translucent quality of the opal. This is essentially an artist's picture, but it is also one that the layman can own with ever-increasing satisfaction

Size 24" x 20"

Price \$1000

MACBETH GALLERY, 15 EAST 57th STREET, NEW YORK CITY



ROBERT HENRI, N.A.

JIMMIE O'D.

Jimmie is a delightful member of the Irish group that Henri painted last summer. He is a real boy, beautifully painted, and he makes a fine, colorful canvas. The strongest color accent is the blue and red scarf knotted about his neck. The red finds a counterpart in the youngster's cheeks; his yellowish-brown hair is topped by a big brown cap. The flannel shirt is a beautiful blue, like most of the background. Both are relieved by brilliant green in the vest and in one spot in the background above the cap visor

Size 24" x 20"

Price \$2500



H. DUDLEY MURPHY

PORTO RICAN BRIDGE

There is a beautiful texture in the cream-white of the old bridge. Above the roadway, the protecting rail is a light buff which is repeated in darker notes down the buttress-column. The trees are treated in a flat decorative way that is most effective with the quaint, old-world quality of the blue cart drawn by a pair of brown and white oxen. This is a decidedly decorative canvas of fine home size

Size 20" x 30"

Price \$600

MACBETH GALLERY
15 EAST 57th STREET
NEW YORK CITY



HOBART NICHOLS, N.A.

THE TROUT STREAM

The fisherman is trying out the rapids just below the deeper shadowed waters of the mountain stream. The right bank is in bright sunlight; the wooded bank across the stream, in deep shadow. There is fine feeling of swiftly moving water, and fine quality of color. This is a canvas that should delight both the fisherman and the art lover

Size 18" x 22"

Price \$600

MACBETH GALLERY
15 EAST 57th STREET
NEW YORK CITY



E. H. POTTHAST, N.A.

RISING MISTS

So far as a small canvas can render it, Potthast gives us the Canyon in this fine example of his work. It is as impossible to describe the color of the picture as of the Canyon. Greens, deep in the shadowed foreground, brilliant where the sunlight strikes; purples, lavenders, pinks—in short, all the colors and tones of the original are in this picture, which makes a high note of accomplishment for the artist

Size 24" x 30"

Price \$800

MACBETH GALLERY
15 EAST 57th STREET
NEW YORK CITY



E. W. REDFIELD

THE OLD HOMESTEAD

Here is one of the best of Redfield's smaller canvases, and it has all the quality found in his larger works. The old stone homestead is brownish-grey seen against blue and purple tones in the hills beyond the ravine. The sleigh and its lone occupant make colorful notes against the snow. The air is crisp and clear, but the grey sky holds the promise of more snow to come

Size 21½" x 25½"

Price \$1200

MACBETH GALLERY
15 EAST 57th STREET
NEW YORK CITY



F. BALLARD WILLIAMS, N.A.

ARCADIAN DOMAINS

It is a long time since we have been able to offer one of the smaller decorative pictures by Ballard Williams. This has the quality both of design and color found in his largest works and will be a striking addition to the salon or music room where rich decorative notes are particularly in keeping. The prevailing tones are coral, blue, white and citron

Size 16" x 24"

Price \$1100

MACBETH GALLERY
15 EAST 57th STREET
NEW YORK CITY

Box 024
M121
ART PORTFOLIO

for

OCTOBER 1926

Belmore Browne

John F. Carlson, N. A.

E. W. Deming

Charles Warren Eaton

Albert L. Groll, N. A.

Robert Henri, N. A.

Carl Lawless

Walter L. Palmer, N. A.

Edward W. Redfield

Chauncey F. Ryder, N. A.

Walter Ufer, A. N. A.

Horatio Walker, N. A.

THE MACBETH GALLERY

15 East 57TH Street

New York City

THE RECEPTION given our first series of Art Portfolios last year and the evident desire of out-of-town art lovers to make use of it in selecting pictures for their homes, has made a second series inevitable.

In this Portfolio, as in the five which will follow it, are reproductions of twelve paintings just received from the artists' studios. These are offered for sale at prices established by the artists, and in offering them for your consideration, we are acting as the artists' personal representatives.

Designate by letter, or reserve by wire to be followed by a letter of confirmation, any picture reproduced here that would seem to meet your requirements. Persons not known to us are asked to give one bank and one mercantile reference, together with *explicit express address*.

You are put to no expense, either for transportation or insurance. All we ask is that, if the picture does not come up to expectations, you will use the greatest possible care in re-packing, and that you will return it promptly.

If, as we hope, the picture meets with your approval, it may be paid for in full or in installments arranged for your convenience.

WILLIAM MACBETH, INC.



BELMORE BROWNE

LAKE LOUISE—EARLY SPRING

The winter snow covering has begun to leave the high mountains, though Victoria still holds her full ice-cap. Patches of grey-brown rock show in relief against white of snow and low-hanging clouds. Cold blue water shows through breaks in snow-covered ice and overhead, the blue sky holds a promise of the warmth of approaching spring

Size 25" x 30"

Price \$500

MACBETH GALLERY
15 EAST 57th STREET
NEW YORK CITY



JOHN F. CARLSON, N.A.

MORNING GLEAM

Silvery grey is the dominating tone of this direct winter landscape. There are sharp accents of green and brown in the foreground cypress and the big tree trunks. A silvery green stream leads the eye past the blue-grey cottage on the left, the old barn and rose-tinted house on the right, and around the bend where our imagination is allowed to fill in the distance. This canvas compares most favorably with "Snow Manteled Highway" by the same artist sold from our last Portfolio series

Size 18" x 24"

Price \$600

MACBETH GALLERY
15 EAST 57th STREET
NEW YORK CITY



E. W. DEMING

DEFIANCE

In sharp outline against the distant mesas, this Indian warrior and his pinto are thrown in high relief. The pony is sorrel with white spots; his legs, mane and tail, black. The Indian, nude above the waist, has yellow breeches and a red breech-clout. The scene is Arizona, with full sunlight on the red and yellow buttes

Size 16" x 20"

Price \$300

MACBETH GALLERY
15 EAST 57th STREET
NEW YORK CITY



CHARLES WARREN EATON

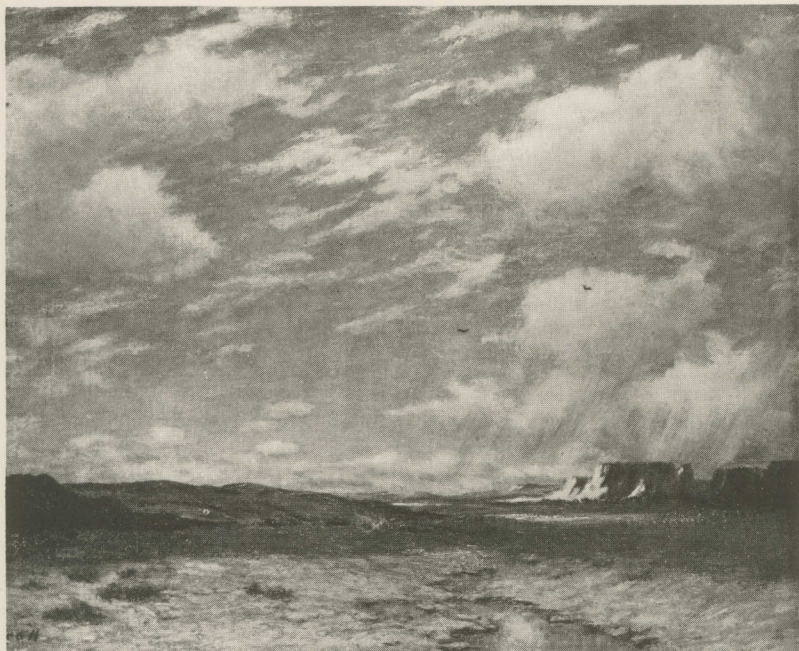
LIGHT TRIUMPHANT

This is a particularly brilliant rendering of the pine tree subjects that Eaton has so often painted. Through the deep greens of the forest, touching the foreground here and there, and emphasized in the great arch of the sky, the golden sun bathes the whole landscape in a glorious light

Size 20" x 24"

Price \$500

MACBETH GALLERY
15 EAST 57th STREET
NEW YORK CITY



ALBERT L. GROLL, N.A.

FLYING CLOUDS—ARIZONA

Clouds with a promise of not far distant rain, make an interesting pattern across the beautiful blue of the Arizona sky. The foreground, in subtle shades of greys and browns, is in shadow, while the rosy mesas in the middle distance are bathed in brilliant sunlight. There is a suggestion of a prairie schooner in the central distance, and a little pool takes its place in the immediate foreground

Size 20" x 25"

Price \$900

MACBETH GALLERY
15 EAST 57th STREET
NEW YORK CITY



ROBERT HENRI, N.A.

LITTLE IRISHMAN

Here is a particularly engaging member of Henri's Irish series of young people. The prevailing color is the pea-green of the lad's smock, in sharp contrast to a deep blue background. Red cheeks, blue eyes and reddish-brown hair, all emphasize the character of this appealing small boy

Size 24" x 20"

Price \$2500

MACBETH GALLERY, 15 EAST 57th STREET, NEW YORK CITY



CARL LAWLESS

WILLOW HOLLOW

A settlement of small houses in variegated colors—orange, green, blue and brown—is seen through the grove of willows, the tree trunks dark against the winter landscape. A stream winds back to the hills in the distance, rising with snow patches in their purple slopes, to a clear blue-green sky

Size 30" x 30"

Price \$450

MACBETH GALLERY
15 EAST 57th STREET
NEW YORK CITY



WALTER L. PALMER, N.A.

THE RIVER SHORE

Snow-laden pines droop gracefully above the floes of the ice-bound river. The morning sun flecks the snow through purple shadows, and a brightly illumined slope leads to the distant highlands. There is emerald green in the water of the brook, echoed by deeper tones in the foliage of the pines' mysterious depths

Size 25" x 30"

Price \$750

MACBETH GALLERY
15 EAST 57th STREET
NEW YORK CITY



EDWARD W. REDFIELD

ROAD TO EASTON

A country road, with its brown mud showing through the melting snow, leads over the hill past a group of the stone and stucco houses so characteristic of the Pennsylvania-Dutch community. There is a bright red note in the "tam" of the school-girl in the foreground, and greens and browns, with hazy purple tones, predominate in the trees against the cool blue winter sky with its occasional fleecy clouds

Size 26" x 32"

Price \$1800

MACBETH GALLERY
15 EAST 57th STREET
NEW YORK CITY



CHAUNCEY F. RYDER, N.A.

ROAD TO GREELEYS'

A typical upland road, sandy both as to substance and color, leads between cool green banks to the top of the hill. Here a red barn denotes the presence of a farm house beneath an elm silhouetted against piling clouds in a blue sky. Across from the farm is a mass of trees, almost black in their contrast to the lighter greens of the picture. The whole is permeated with an unusual quality of clear mountain air

Size 18" x 22"

Price \$600

MACBETH GALLERY
15 EAST 57th STREET
NEW YORK CITY



WALTER UFER, A.N.A.

THE SNOW TRAIL

The stark realism of Indian life as well as the master craftsmanship of Ufer's art is well reflected in this fine canvas. The brown horses, the sparkling green of the Indian's robe, the rose-red of his saddle cloth and the greens of the distant tree-covered hills with snow in purple shadow showing through, all make a finely decorative color-effect, which is added to by the blue of the sky, reflected in the lake in the middle distance

Size 20" x 25"

Price \$1000

MACBETH GALLERY
15 EAST 57th STREET
NEW YORK CITY



HORATIO WALKER, N.A.

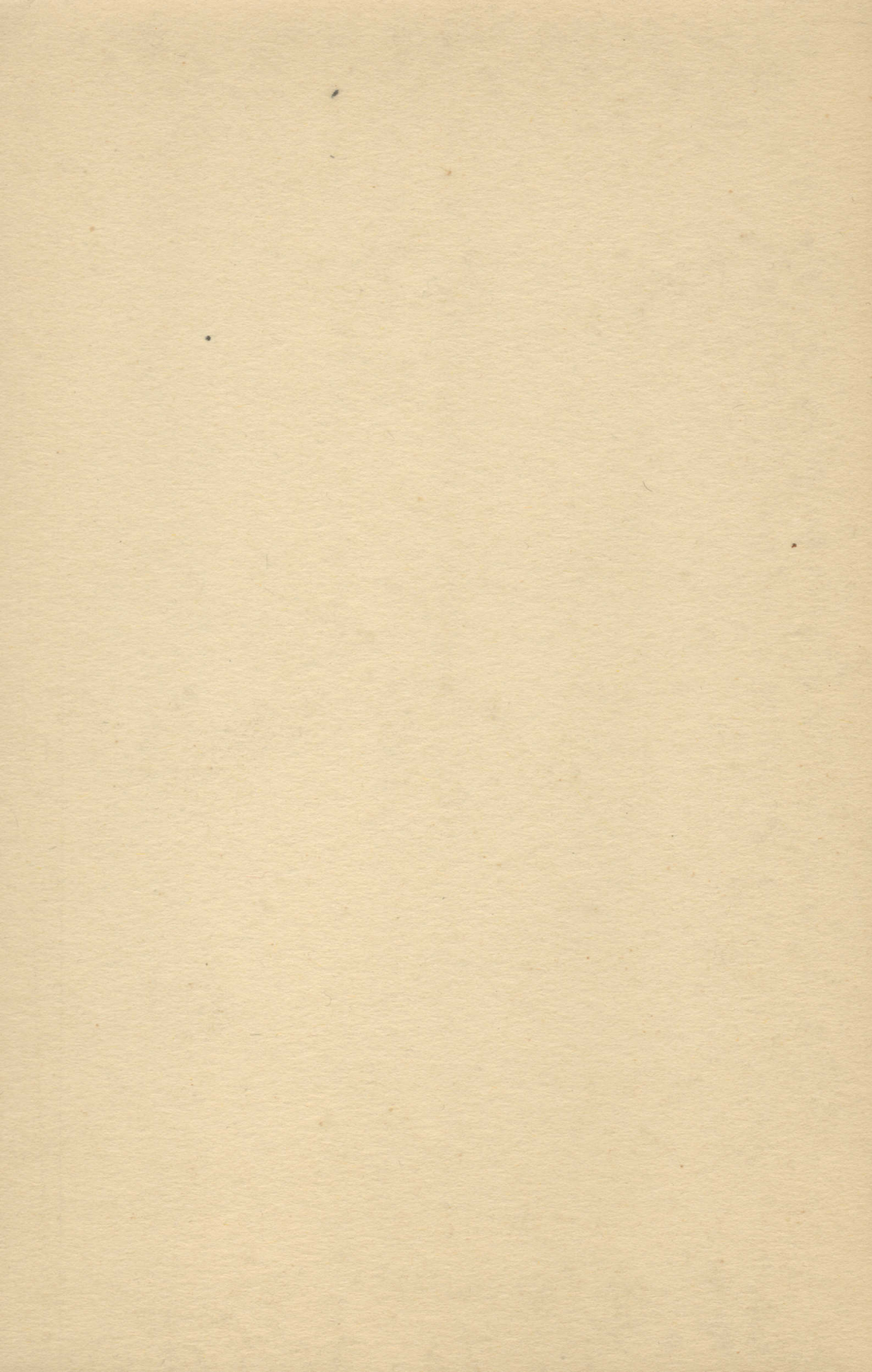
GIRL FEEDING CALVES

A Canadian peasant girl, clad in grey blouse and brick red skirt, has filled the trough for the calves' morning drink. The nearer animal is black and white; her companion, brown, seen against greys and greens of the hedge-inclosure. The morning sky is silver and gold, lighted by a sun not yet fully risen. This is one of Walker's finest water colors of his latest period

Size 14½" x 18½"

Price \$750

MACBETH GALLERY
15 EAST 57th STREET
NEW YORK CITY



FOR THIS NOVEMBER PORTFOLIO it has taken longer than usual to make a proper selection for the consideration of out-of-town picture buyers. The choice finally arrived at, however, is an unusually good one, and we give our hearty endorsement to the canvases reproduced in this issue.

The procedure to be followed to see one or more of these pictures in your home is simple.

Designate by letter, or reserve by wire to be followed by a letter of confirmation, any picture reproduced here that would seem to meet your requirements. Persons not known to us are asked to give one bank and one mercantile reference, together with *explicit express address*.

You are put to no expense, either for transportation or insurance. All we ask is that, if the picture does not come up to expectations, you will use the greatest possible care in repacking, and that you will return it promptly.

If, as we hope, the picture meets with your approval, it may be paid for in full or in installments arranged for your convenience.

Because of the late appearance of this issue, the next Portfolio will bear the January imprint and will appear about January 20. Number six in our series will be published in April, instead of in March, as announced.

WILLIAM MACBETH, INC.



MAURICE BRAUN

WOODED HILLS

Color is the keynote of this bright landscape. Autumn tints of gold, brown and violet in the trees and fields, and a clear blue sky, fill the canvas. In the foreground, a fine blue-green shadow is cast by a brilliant orange and brown maple at the extreme right of the picture

Size 20" x 24"

Price \$300

MACBETH GALLERY
15 EAST 57th STREET
NEW YORK CITY



EMIL CARLSEN, N.A.

SIDE RUNNING SEA

A blue and white picture with a long thin arm of sand on the horizon at the left. There is nice distinction between the quiet blue of the sky and the calm but moving blue of the sea; between the delicate tufts of light clouds and the white spread of the foam. A small canvas full of strength and beauty,—and with the “feel” of the sea

Size 25" x 30"

Price \$2500

MACBETH GALLERY
15 EAST 57th STREET
NEW YORK CITY



JAY H. CONNAWAY

THE GIANT IN WINTER

A few fall colors remain in the centre foreground, in contrast to the blues and deep violets of the trees in the valley. The hills in the distance are snow-covered, and the bright winter sky gives a clear atmosphere to the whole landscape. A fine and sympathetic rendering of the artist's Adirondack series

Size 25" x 30"

Price \$500

MACBETH GALLERY
15 EAST 57th STREET
NEW YORK CITY



ELLIOTT DAINGERFIELD, N.A.

NIGHT SILENCES

A rich yellow moon lights a summer landscape of green. Tall, dark pines at the left give a sense of dignity and quietness to the painting while less severe are the trees to the right. The sky is filled with fleecy clouds and a note of mystery prevails. This is a picture which would be a delight to live with

Size 24" x 34"

Price \$3500

MACBETH GALLERY
15 EAST 57th STREET
NEW YORK CITY



CHARLES H. DAVIS, N.A.

CLOUDS

Green pastures with trees along the horizon and cattle in the right foreground compose this picture. A bright blue sky with large billowy clouds such as only Davis can paint to advantage, gives a great amount of light, and patches of sunlight are seen on the fields. An excellent example of Davis' cloud pictures

Size 25" x 30"

Price \$1800

MACBETH GALLERY
15 EAST 57th STREET
NEW YORK CITY



CHARLES W. HAWTHORNE, N.A.

CHARLOTTE

In this portrait, Hawthorne has given us a very delightful treatment of a child. The delicate tints of the face and the soft green of her dress are in contrast with the more sombre background of brown, blue and red. The artist has caught the whimsical, half-serious expression of the mouth and eyes of the little girl

Size 30" x 25"

Price \$2500

MACBETH GALLERY, 15 EAST 57th STREET, NEW YORK CITY



ARTHUR MELTZER

WOODLAND TAPESTRY

A true tapestry woven of winter colors—blues, violets, greens and browns in the background, through which one can see distant hills in a haze. The trees in the foreground show lighter tones of reds and browns, and fresh snow covers the ground. A small brook winding through the center of the picture, reflects the colors of the woods

Size 20" x 24"

Price \$225

MACBETH GALLERY
15 EAST 57th STREET
NEW YORK CITY



H. DUDLEY MURPHY

WHITE FLOWERS

A brilliant Chinese red is the appropriately rich hanging behind these simple flowers of white. Cosmos, chrysanthemums, asters and others—all pure white, with green leaves and stems showing above a blue-black vase, make a most decorative picture. The statuette—a tiny old man in grey—completes the design

Size 30" x 25"

Price \$750

MACBETH GALLERY, 15 EAST 57th STREET, NEW YORK CITY



IVAN G. OLINSKY, N.A.

ROSE OF SHARON

A tapestried background of green, rose and blue in harmonious tones brings out to full advantage the soft creamy tints of the girl's flesh, while the blue of her eyes is emphasized by the warm violet blue of her dress. The portrait is full of color and charm, and the modelling of the face and hands is particularly pleasing

Size 30" x 25"

Price \$1200

MACBETH GALLERY, 15 EAST 57th STREET, NEW YORK CITY



EDWARD H. POTTHAST, N.A.

RING AROUND THE ROSIE

The carefree joy of the children and their bright clothes give this charming painting a very real touch. Two pink dresses to the left, a yellow one behind the little boy with brown trousers, and the baby in white are pleasing against a quieter background of natural colors. Light, life and joy radiate from the group

Size 20" x 24 "

Price \$550

MACBETH GALLERY
15 EAST 57th STREET
NEW YORK CITY



GUY WIGGINS, A.N.A.

SHADBLOW

Here is one of the best of Wiggins' late canvases in which the facts of nature are used to make a fine design of form and color. The foreground is warm with the first tints of early autumn, while a few touches of green are still visible. The clean cut black outline of young trees, some of which have already lost their foliage, is emphasized by the sharp ridge of blue-grey hills across the valley

Size 20" x 24"

Price \$750

MACBETH GALLERY
15 EAST 57th STREET
NEW YORK CITY



F. BALLARD WILLIAMS, N.A.

THE GARDEN VISTA

The delicacy of this decorative painting is emphasized by the colors of the landscape as well as by the graciousness of the ladies. Coral, green, lavender and blue tints of the gowns show to advantage against the rich background of nature in bright sunlight. This is an especially desirable picture for an over-mantel space in a formal room

Size 21" x 40"

Price \$1800

MACBETH GALLERY
15 EAST 57th STREET
NEW YORK CITY

1307 024 M121

ART PORTFOLIO

for

MARCH, 1927

Maurice Braun

William M. Chase, N. A.

Jay Connaway

Charles H. Davis, N. A.

Arthur L. Meltzer

H. Dudley Murphy

Ivan G. Olinsky, N. A.

Edward H. Potthast, N. A.

Walter W. Thompson

Walter Ufer, N. A.

Guy Wiggins, A. N. A.

F. Ballard Williams, N. A.

THE MACBETH GALLERY

15 East 57TH Street

New York City

*I*N THIS PORTFOLIO are reproductions of twelve paintings either just received from the artists' studios, or recent purchases for our own stock.

Designate by letter, or reserve by wire to be followed by a letter of confirmation, any picture reproduced here that would seem to meet your requirements. Persons not known to us are asked to give one bank and one mercantile reference, together with *explicit express address*.

You are put to no expense, either for transportation or insurance. All we ask is that, if the picture does not come up to expectations, you will use the greatest possible care in re-packing, and that you will return it promptly.

If, as we hope, the picture meets with your approval, it may be paid for in full or in installments arranged for your convenience.

WILLIAM MACBETH, INC.



MAURICE BRAUN

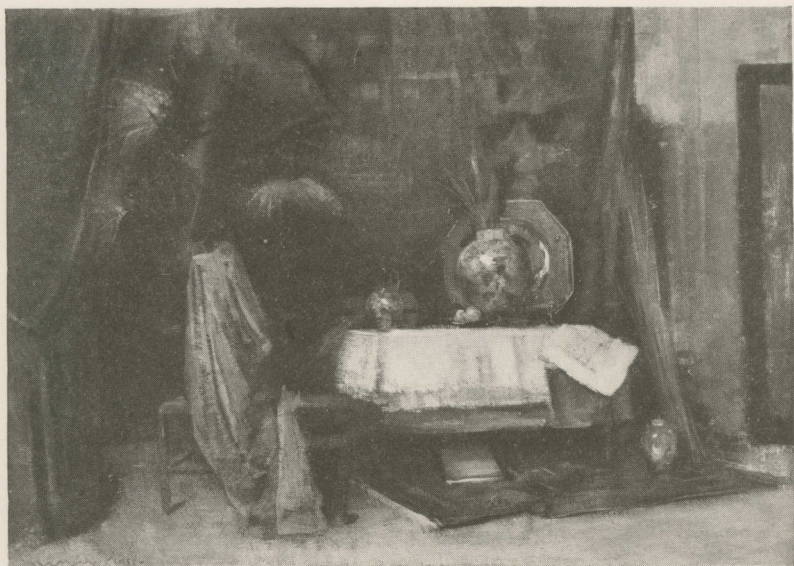
CALIFORNIA LANDSCAPE

A mellow golden field is seen between groups of rich green eucalyptus trees. The immediate foreground is in autumn shades. The delicately colored hills in the distance are topped by a bright blue sky and a few clouds. The whole painting is filled with sunlight

Size 25" x 30"

Price \$500

MACBETH GALLERY
15 EAST 57th STREET
NEW YORK CITY



WILLIAM M. CHASE, N.A.

INTERIOR

This rather quiet interior by Chase is rich and deep in tone. The white cover on the table relieves the brown of the draperies and the wall covering. A large blue jar on the table is in front of a metal placque. There is also some orange fruit and a jug. The chair toward the left is draped with some brownish material and is in front of a green palm. A small oriental rug is on the floor, as well as a vase and book

Size 20" x 27"

Price \$450

MACBETH GALLERY
15 EAST 57th STREET
NEW YORK CITY



JAY CONNAWAY

HEADLANDS

Large grey-blue cliffs jut out from the mainland on the right, and at their base a blue-green sea breaks. In the foreground are brown rocks and toward the right, a wave has just broken, sending up a small cloud of spray. There are white clouds with a clear blue space toward the top of the canvas

Size 25" x 30"

Price \$500

MACBETH GALLERY
15 EAST 57th STREET
NEW YORK CITY



CHARLES H. DAVIS, N.A.

THE BARN

An old barn with two smaller buildings and several old trees are outlined on the horizon against a delicate sunset glow which is centralized behind the largest of the buildings. Toward the left the sky softens to grey. The field in front is dull brown and the figure of a man is discernible on the right as he walks toward the barn

Size 20" x 27"

Price \$1200

MACBETH GALLERY
15 EAST 57th STREET
NEW YORK CITY



ARTHUR L. MELTZER

APPROACH OF AUTUMN

A white farmhouse nestles at the foot of the low green hill. In front of it a woman is feeding white leghorns. The foliage which is left on the tree is in autumn shades of orange and yellow. The tree on the left is a deep green, and from behind it the setting sun lights up the house. The sky has a few sunset colors of pink and gold

Size 22" x 24"

Price \$275

MACBETH GALLERY
15 EAST 57th STREET
NEW YORK CITY



H. DUDLEY MURPHY

THE BEACH, AFTERNOON

Clear light sand in the foreground contrasts with the grey-blue of the sky. Between the two, a narrow strip of the ocean with a few white breakers is offset by beach parasols of pink, lavender, red, green and orange, as well as by the light tones of the clothes on the people who are grouped along the water's edge

Size 20" x 27"

Price \$350

MACBETH GALLERY
15 EAST 57th STREET
NEW YORK CITY



IVAN G. OLINSKY, N.A.

REFLECTIONS

The creamy tints of the girl's throat and hands and light golden hair are clearly defined against a rich blue background with a blue and lavender flower motive. Her white garments show through a delicate black lace shawl. The table in the lower right hand corner holds an open red box and a small jar of white narcissus blooms

Size 30" x 40"

Price \$2000

MACBETH GALLERY, 15 EAST 57th STREET, NEW YORK CITY



EDWARD H. POTTHAST, N.A.

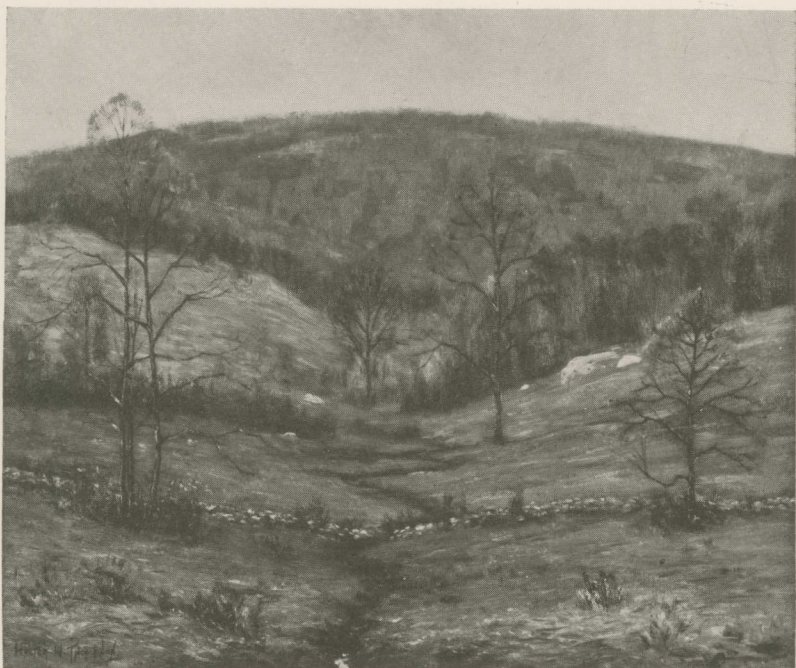
LITTLE SEA BATHER

The lavender grey tone of the painting is enlivened by the white and green of the breakers. Several people are disporting themselves in the water, and one little girl in the left foreground with a red suit and a large red hair ribbon is running to join the others. This is a splendid example of Potthast's work

Size 12" x 16"

Price \$350

MACBETH GALLERY
15 EAST 57th STREET
NEW YORK CITY



WALTER W. THOMPSON

SPRINGTIME, WESTCHESTER COUNTY

The gentle slope of the foreground is broken by a tiny freshet which comes from the dark hills above. A low stone fence crosses the stream and the young trees are topped with feathery green leaves. At the base of the hill is a line of purplish brown trees. Pale blue sky shows at the top of the canvas

Size 20" x 24"

Price \$250

MACBETH GALLERY
15 EAST 57th STREET
NEW YORK CITY



WALTER UFER, N.A.

A RIDER—AUTUMN

A Mexican Indian and his mare are homeward bound. The rider in a blue shirt and black hat looks out from the canvas as his tired horse plods slowly along. The slanting sun rays show through the slim trunks and branches of the cottonwoods and a thin line of blue hills is on the horizon. The bright autumn coloring of this painting with the darker tones of the horse and rider makes a very decorative piece

Size 20" x 25"

Price \$1000

MACBETH GALLERY
15 EAST 57th STREET
NEW YORK CITY



GUY WIGGINS, A.N.A.

APRIL MORNING

A clear light gives this picture the fresh aspect of a spring day. The brown rock-strewn land in front is broken in the center by an old wagon road, now a bright green. A few dark trees on the right have the same sort of foliage as those in the distance—soft grey. A grey hill beyond and a quiet pale sky complete this composition

Size 20" x 24"

Price \$750

MACBETH GALLERY
15 EAST 57th STREET
NEW YORK CITY



F. BALLARD WILLIAMS, N.A.

UNDER THE BOUGHS

A group of court ladies on the right, another on the left and still a third in the distance, supply the lighter colors of white, blue, red, green and gold. The garden itself harmonizes with the soft browns and greens of the foliage. The trees on the right bend so as to form a lovely frame for this decorative and graceful painting

Size 25" x 30"

Price \$1800

MACBETH GALLERY
15 EAST 57th STREET
NEW YORK CITY

Box 024
M121
ART PORTFOLIO

for

NOVEMBER, 1927

Clifford W. Ashley

Ernest H. Barnes

Kenneth Bates

Frank W. Benson, N. A.

George Breustle

Warren Davis

Charles Warren Eaton

H. Dudley Murphy

Theodore Robinson

Chauncey F. Ryder, N. A.

Guy Wiggins, A. N. A.

F. Ballard Williams, N. A.

THE MACBETH GALLERY

15 East 57TH Street

New York City

*I*N PRESENTING our new Portfolio—for the most part of pictures that have come to us during the month of November—we offer a slight variation from the selections afforded by previous issues. Several subscribers have asked us to include smaller and less expensive paintings, as well as a few typical etchings from our current stock. We are glad to comply with these requests and in this issue there are reproduced four of the "Thumb Box" pictures such as have been featured at Lyme, Mystic and other artist-colonies, as well as in the annual exhibitions at the Salmagundi Club in New York. Two splendid etchings from our growing collection are included. It should be borne in mind that we are always able to offer a varied selection of these at prices ranging from about ten dollars up.

The pictures in this issue are mostly direct from the studios and are for sale at prices established by the artists, for whom we are acting as agents.

Designate by letter, or reserve by wire to be followed by a letter of confirmation, any picture reproduced here that would seem to meet your requirements. Persons not known to us are asked to give one bank and one mercantile reference, together with *explicit express address*.

You are put to no expense, either for transportation or insurance. All we ask is that, if the picture does not come up to expectations, you will use the greatest possible care in re-packing, and that you will return it promptly.

If, as we hope, the picture meets with your approval, it may be paid for in full or in installments arranged for your convenience.

WILLIAM MACBETH, INC.



CLIFFORD W. ASHLEY

WHALE SHIP

A deep blue ocean and a blue and grey mottled sky form the background for a full-rigged ship sailing head on, with a good wind. The ship is a whaler, and its sails are full. The tang and freshness of the salt air seems to penetrate the canvas, which is a distinctive piece of decoration as well as a fine painting of a ship

Size 26" x 22"

Price \$500

MACBETH GALLERY, 15 EAST 57th STREET, NEW YORK CITY



ERNEST H. BARNES

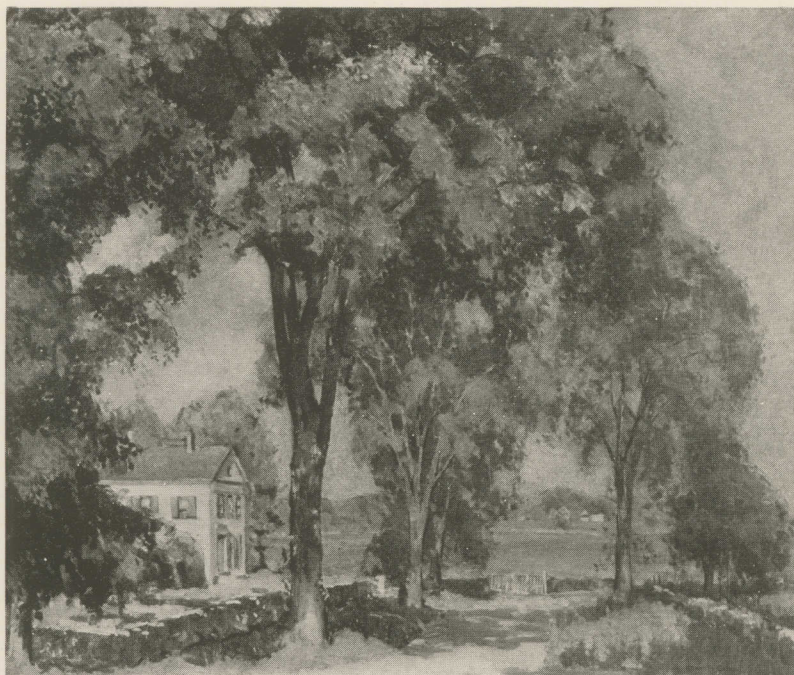
LATE AUTUMN

The fertile river valley is flooded with clear, warm, autumn sunlight. In the foreground are pastures with a winding road and on both sides of the river, green as well as golden trees and white houses. Across the river the fields form a gentle slope, and above is a soft afternoon sky

Size 20" x 24"

Price \$250

MACBETH GALLERY
15 EAST 57th STREET
NEW YORK CITY



KENNETH BATES

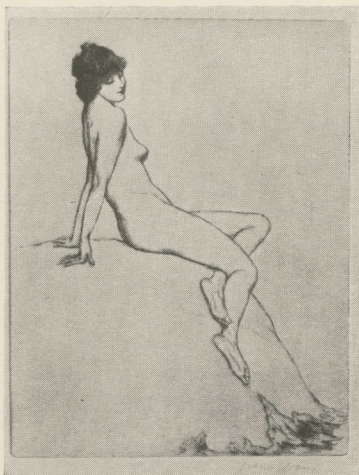
ROAD TO THE RIVER

This painting by one of the younger group of artists in Mystic is full of sunlight and soft colors. On the left enclosed by a grey stone wall stands a white house with green blinds, half hidden by tall elms. There are more elms bordering the road as it leads to the river. Green banks are opposite and a few white houses, while the clear sky above is of the same blue as the river

Size 25" x 30"

Price \$275

MACBETH GALLERY
15 EAST 57th STREET
NEW YORK CITY



Warren Davis

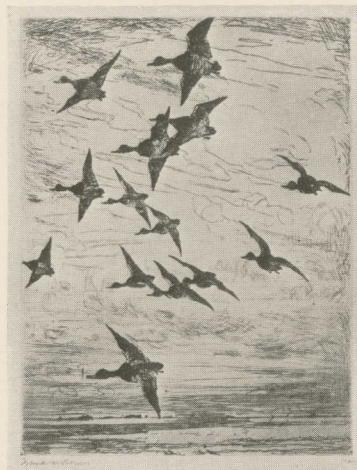
The Bather (etching)

Size 8" x 6"

Price \$60

This etching is one of the best of Mr. Davis' single figures. There is a simplicity of composition and a delicacy of line which makes the picture so enjoyable

This etching is a splendid example of Benson's knowledge of birds and his meticulous care of detail and composition



Frank W. Benson, N.A. High Flying Ducks (etching)

Size 7 $\frac{3}{4}$ " x 6"

Price \$125

MACBETH GALLERY
15 EAST 57th STREET
NEW YORK CITY



George Bruestle

Early Autumn (Thumb Box)

Size 8" x 10"

Price \$80

The trees are ablaze with orange tones and shine brightly against a blue sky. The house toward the center is grey with a dark roof

Bright sunlight from the left shines on the grey and brown farm house, the green trees and the road. The sky is light blue with white clouds



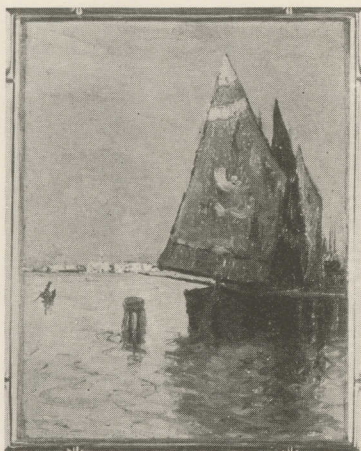
George Bruestle

Summer Day (Thumb Box)

Size 8" x 10"

Price \$80

MACBETH GALLERY
15 EAST 57th STREET
NEW YORK CITY



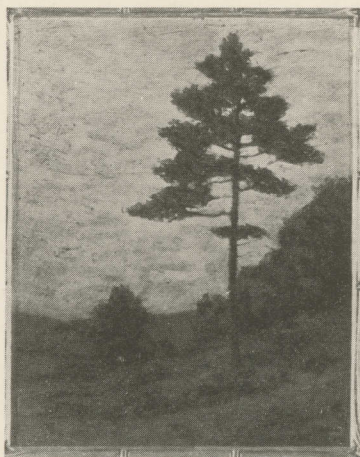
Charles Warren Eaton Venice (Thumb Box)

Size 8" x 10"

Price \$80

The sails of the boats are brilliant orange and yellow, while the blue water reflects these tones. In the distance Venice itself is seen in soft yellows. The sky is blue

The deep brown and green tones of the woods are in foreground and trees. The sky is light yellow with a tint of green across the top



Charles Warren Eaton The Lonely Pine (Thumb Box)

Size 8" x 10"

Price \$80

MACBETH GALLERY
15 EAST 57th STREET
NEW YORK CITY



H. DUDLEY MURPHY

SEPTEMBER FLOWERS

A few small chrysanthemums and three or four cosmos in a glass vase,—the whole in crisp outline against a black background,—makes this a simple and lovely bit of decoration. The flower colors are rose, white, yellow and orange, and the table is a dull sage green

Size 20" x 16"

Price \$250

MACBETH GALLERY, 15 EAST 57th STREET, NEW YORK CITY



THEODORE ROBINSON

LOW TIDE, RIVERSIDE YACHT CLUB

Small white sail boats are at anchor in the shallow water. The tide is low and the foreground shows clumps of marsh grass. Across the river is the club, a few other houses and green trees. A quiet, restful canvas by one of America's Old Masters

Size 18" x 24"

Price \$850

MACBETH GALLERY
15 EAST 57th STREET
NEW YORK CITY



CHAUNCEY F. RYDER, N.A.

EDGE OF THE PASTURE

Grey predominates in this small but typical canvas by Mr. Ryder. The foreground is rocky pasture land with an upward slope toward the center of the picture where there are two very dark scrubby trees and a few slender ones. The hills in the distance are a lavender grey and the sky is a soft grey

Size 20" x 24"

Price \$750

MACBETH GALLERY
15 EAST 57th STREET
NEW YORK CITY



GUY WIGGINS, A.N.A.

HIGH TIDE IN THE COVE

From a point above this English fishing village, one looks down over the house tops of grey slate and red brick, and across a cove where several boats are at anchor. In the lower left hand corner is a mass of green foliage with notes of yellow and red. The banks rising from the further side of the cove are green. The water is pale blue, and the sky is heavy with blue-grey clouds

Size 16" x 20"

Price \$500

MACBETH GALLERY
15 EAST 57th STREET
NEW YORK CITY



F. BALLARD WILLIAMS, N.A.

A GARDEN OF MEMORY

This small but extremely decorative canvas shows four ladies dressed in elaborate gowns of white, dull green and soft brown. Their attention is centered on a dog at the left. At the extreme left, branches from an old and large tree serve as part of a setting for this group on the balcony. At the right is a field, with blue sky and a few white clouds above

Size 16" x 24"

Price \$1100

MACBETH GALLERY
15 EAST 57th STREET
NEW YORK CITY

Box

024

M121

ART PORTFOLIO

for

DECEMBER, 1928

Maurice Braun

Belmore Browne, A.N.A.

Floyd Clymer

Jay Connaway

Charles H. Davis, N.A.

F. C. Frieske, N.A.

Albert L. Groll, N.A.

Childe Hassam, N.A.

Hayley Lever, A.N.A.

J. Olaf Olson

Walter L. Palmer, N.A.

W. Lester Stevens

THE MACBETH GALLERY

15 East 57TH Street

New York City

THE PICTURES reproduced in this Portfolio reflect a wide range of interest. Many of our correspondents during the summer asked that water colors be included. Unfortunately, water colors as a rule do not photograph well, so we are limited in our selection to those with contrasts of form as well as of color. It is always possible, however, to send a selection of originals to those who are particularly interested in work in the water color medium, and our subscribers have only to write us what type they would like to inspect.

We renew our offer to send for inspection, properly framed, any of the canvases here reproduced, without obligation or expense. Each picture is, of course, an original and unique work, so that should more than one person desire to see the same picture, it must be sent to the first applicant.

Persons not known to us are asked to give one bank and one mercantile reference. On receipt of application, the picture will be carefully packed and forwarded by prepaid express. If it does not come up to expectations, we ask that reasonable care be exercised in repacking, and that it be returned within ten days of its receipt.

WILLIAM MACBETH, INC.



MAURICE BRAUN

AUTUMN TINTS

To the right, birches still hold their bright green foliage, which serves as a foil for the brilliant brown and orange reds toward the left. Notes of red recur through the grasses of the foreground. A cool autumnal sky with fleecy clouds is in perfect harmony

20" x 24"

Price \$300

MACBETH GALLERY
15 EAST 57TH STREET
NEW YORK CITY



BELMORE BROWNE, A.N.A.

THE FOREST RANGER

The lover of the northwest will respond immediately to the appeal of this picture. The ranger, followed by his pack horse, descends the valley through grasses of a particularly pleasant green. The dark notes of the pines stand in bold relief against the distant mountains that raise their jagged peaks into a cool blue sky

18" x 24"

Price \$450

MACBETH GALLERY
15 EAST 57TH STREET
NEW YORK CITY



FLOYD CLYMER

LABRADOR—WINTER

In this strong water color the brown-red storehouse gives the dominant color note. This accent is repeated in the ice-bound boat in the foreground, and, in the darker tones in the headlands seen across the ice. We recommend this type of picture as a splendid example of sane modernism

14" x 20"

Price \$150

MACBETH GALLERY
15 EAST 57TH STREET
NEW YORK CITY



JAY CONNAWAY

STORM HEAD HARBOR, MAINE

Maine cliffs, painted with free vigorous strokes, are seen through the mist of dashing spray. The grey-brown rock-shelf in the foreground makes a pleasing contrast to the blue-grey rocks at the left and the grey headlands of the far distance.

The sea is green broken by white-caps

25" x 30"

Price \$600

MACBETH GALLERY
15 EAST 57TH STREET
NEW YORK CITY



CHARLES H. DAVIS, N.A.

THE GREAT ELM

In this comparatively small canvas Davis gives us all the qualities found in his most important works. While the great elm dominates the composition, the rest of the landscape, with rich and mellow greens, is full of interest. It can be cordially recommended both to the collector and to the buyer of the occasional painting of real value

20" x 27"

Price \$1500

MACBETH GALLERY
15 EAST 57TH STREET
NEW YORK CITY



F. C. FRIESEKE, N.A.

SPRING

Frieseke in his out-of-door work is quite as much at home as in his more frequently exhibited interiors. The fresh yellow-greens, and the figure seen against white flowering fruit trees, with a bright yellow sun hat at her feet, make a delightful and livable picture

19½" x 24"

Price \$500

MACBETH GALLERY
15 EAST 57TH STREET
NEW YORK CITY



ALBERT L. GROLL, N.A.

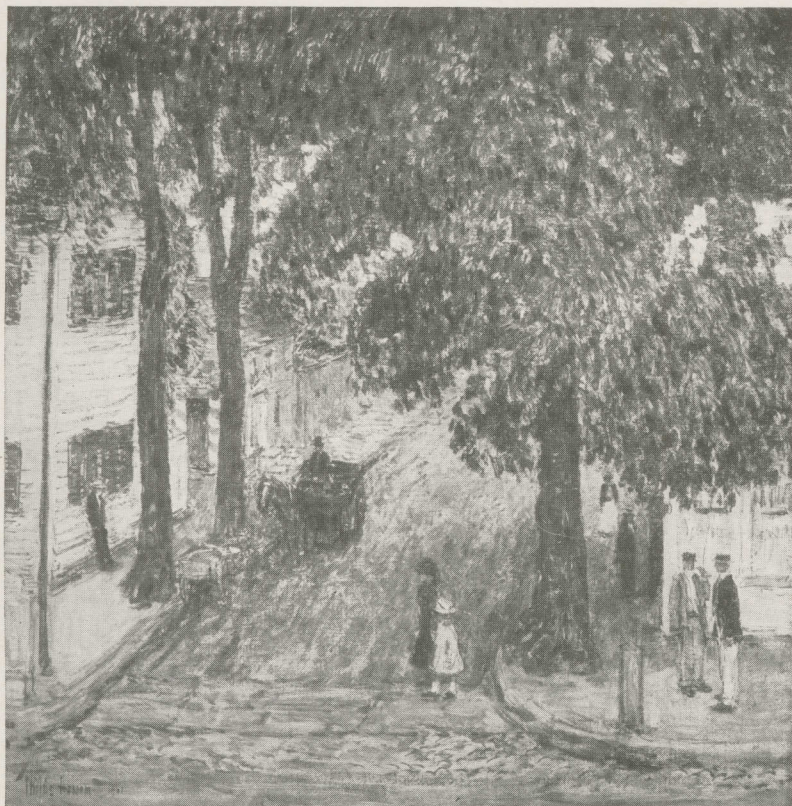
THE BIG CLOUD

A beautiful and thoroughly representative panel by our foremost painter of the desert. Most of the foreground and middle distance is in shadow, but occasionally, and particularly in the right distance, brilliant sunlight brings out the bright colors of the mesas

10" x 14"

Price \$300

MACBETH GALLERY
15 EAST 57TH STREET
NEW YORK CITY



CHILDE HASSAM, N.A.

DUKE STREET, NEWPORT

The collector is here presented with an opportunity to secure an unusual example of Hassam's art, — a picture which we have just bought direct from the artist. It bears the date 1901, placing it at once in a rare period of his work. The creams, yellows and reds of the old Newport houses make a charming color relation

24" x 24"

Price \$4500

MACBETH GALLERY
15 EAST 57TH STREET
NEW YORK CITY



HAYLEY LEVER, A.N.A.

ST. IVES CHURCH

A rich golden glow pervades this fine little landscape of the Cornish Coast, and the brown-red sails of the fishing smacks add further notes of warmth. This picture has real decorative quality and we can cordially recommend it

18" x 24"

Price \$450

MACBETH GALLERY
15 EAST 57TH STREET
NEW YORK CITY



J. OLAF OLSON

GUIDE PACKING HORSES

One of America's foremost water colorists presents this faithful interpretation of life in the open. The pack-horses, two white and one chestnut, are beautifully seen against the browns and greens of the primeval forests. A glimpse of the mountains shows against an early morning sky

15" x 22"

Price \$200

MACBETH GALLERY
15 EAST 57TH STREET
NEW YORK CITY



WALTER L. PALMER, N.A.

NEARING SUNSET

Palmer's water colors are deservedly popular. He has the happy faculty of giving us the "feel" of the out-of-doors as most of us know it. The long shadows of late afternoon, which stretch across the foreground of this example, accent the golden tones of the distant hill and fleecy clouds, which are beautifully reflected in the brook

20" x 24"

Price \$350

MACBETH GALLERY
15 EAST 57TH STREET
NEW YORK CITY



W. LESTER STEVENS

CEDARS IN WINTER

In this freely painted yet soundly constructed canvas, we have a distinctly decorative note that carries with it the spirit of a snowy winter's day. The dark green browns of the evergreens make a splendid pattern of color and add a note of warmth which makes the picture truly livable

30" x 32"

Price \$500

MACBETH GALLERY
15 EAST 57TH STREET
NEW YORK CITY

