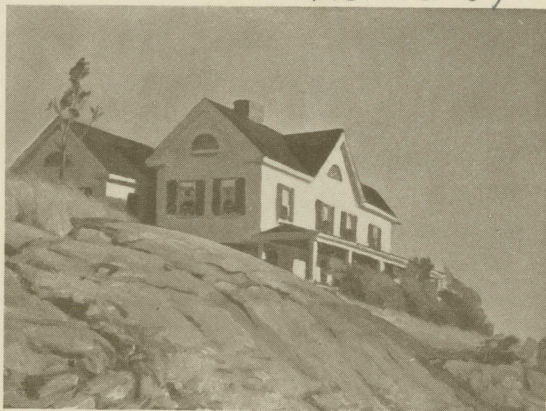


New York (City). Macbeth gallery

020. n48
m12c 39



1931-32

ISLAND HOUSE

MAINE COAST TOWNS
by
C. K. CHATTERTON

—

December 21, 1931 - January 9, 1932

MACBETH GALLERY

15 EAST 57th STREET

NEW YORK CITY

FOREWORD

EVERY summer, for many years, Mr. Chatterton has broken away from his art classes at Vassar College, to indulge his creative spirit in familiar haunts along the Maine Coast. He knows his subjects as one can know them only through intimate association. The old churches, the rugged white houses, and the shadowed streets of Kittery, New Castle, Ogunquit, and Kennebunkport have been his daily companions. He has always painted them as though he knew and loved them.

Since we held his first New York exhibition some fifteen years ago, he has made great strides in the handling of his chosen subjects. To his feeling for the old spots, he has added a directness of approach, a simplified vision, and a fine color sense, that place him at once among the best men in his field.

The enjoyment he felt in the presence of each subject is at once apparent; they look as though they had come to him easily, fluently; and that, after all, is the way a work of art should look, no matter how many hours of concentration have gone into its production.

TITLES

22141 *J*

1. CHURCH AND TOWN HALL,
NEW CASTLE
2. HENRY WEARE'S PLACE
3. NEW ENGLAND HOUSES
4. STREET IN NEW CASTLE
5. HALEY'S HOUSE
6. ISLAND HOUSE
7. OGUNKUIT
8. MAINE FARM HOUSE
9. HOUSE BY THE ROAD
10. NEW CASTLE
11. VILLAGE STREET, KENNEBUNKPORT
12. NEAR PORTSMOUTH
13. CHURCH AT KITTERY

NEXT EXHIBITION

VERMONT LANDSCAPES
FIGURES AND STILL LIVES

by
HERBERT MEYER

January 11-23