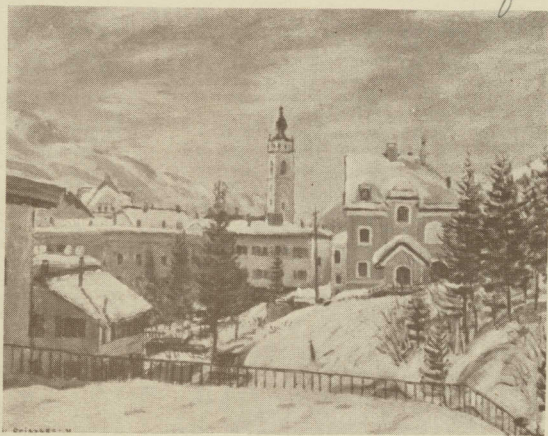


New York (City). Macbeth
gallery 020. n48

m 12 f 91

1932



An Exhibition of
WINTER LANDSCAPES
and other subjects by
F. C. FRIESEKE, N. A.

March 14th to 26th, 1932

MACBETH GALLERY

15 EAST 57th STREET

NEW YORK CITY

FOREWORD

FOR so many years Mr. Frieseke has been known as a painter of the figure, both in and out-of-doors, that the fact that other painting subjects interest him, has been lost sight of. True it is that by his figures he is represented in many of the museums throughout the world.

Pictures like "Before the Mirror" in the Luxembourg, "Nude" in Odessa, "Autumn" in the Modern Gallery in Venice, "The Toilet" in the Metropolitan, "Torn Lingerie" in the City Art Museum, St. Louis, and "Peace" in the Corcoran Gallery in Washington, to mention only a few of his Museum examples, have put him in the forefront of the figure painters of America.

Equally true it is that often an artist may be seen to advantage when he is off parade, so to speak, doing things of an entirely different kind, purely for his own enjoyment. These are the things that keep him young in spirit, preventing hackneyed repetition of those subjects that the public has come to consider typical.

It was in this vein that Mr. Frieseke produced the delightful flower water colors that we were privileged to show two years ago. It is in this same vein that he has produced the group of winter landscapes that we now have the opportunity of submitting for the enjoyment of our visitors.

LIST OF TITLES

1. CHILDREN SKIING
 2. TULIPS
 3. SUNSET
 4. WINTER IN SUN
 5. SKATERS
 6. ALPINE FIELD FLOWERS
 7. LIGHT SNOW
 8. SPRING CROCUS AND ANEMONIES
 9. GIRL KNITTING
 10. SPRING ANEMONIES
 11. MELTING SNOW
 12. TULIPS AND NARCISSI
 13. EARLY SNOW
 14. WINTER'S NIGHT
 15. SNOWY DAY
 16. ALPINE FLOWERS
 17. ALPINE FLOWERS
 18. ANEMONIES AND RENONCULEAS
- 23182

NEXT EXHIBITIONS

Exhibition Arranged for the Annual Convention of the College Art Association, Composed of American Paintings by Artists, past and present, particularly suitable for the Collections of Museums and Colleges.

ALSO

MT. DESERT LANDSCAPES

JONAS LIE, N.A.

March 28th to April 9th