

CATALOGUE OF
GENERAL EXHIBITIONS

Season of 1930-31

MACBETH GALLERY

15 EAST 57th STREET

NEW YORK CITY



JOHN GREENE JOHN SINGLETON COPLEY
(FRAME BY PAUL REVERE)

Typical of our Collectors' Examples of American Art

The Macbeth Gallery was established in 1892 by William Macbeth in the belief that American Art deserved a showing apart from contemporary foreign work. During the following thirty-eight years it has been our consistent policy to show examples of the work of American Painters exclusively.

WILLIAM MACBETH

INCORPORATED

15 EAST 57TH STREET

NEW YORK CITY

FOREWORD

THIS catalog attempts to give our visitors the salient facts in the art life of each of the painters whose work we regularly exhibit. It lists, too, the names of those living artists whose pictures we occasionally have; the living portrait painters whom we recommend according to the special demands of potential sitters; and the men of the past, including both those of our Colonial Period and those who have gone within a very few years, and whose work is still distinctly contemporary.

Of the first group, we shall have during the year representative canvases in our collection, carefully chosen so that each man may be seen at his best, and readily available for the inspection of our visitors. Most of these men we have represented over a period of years, but there are newcomers among them,—younger painters who show decided promise, and whose work is already worthy, in our opinion, of the serious consideration of buyers of good pictures.

Our supply of the work of the deceased painters is necessarily limited, for, in a number of instances, the demand is great and examples of first importance, hard to find. The importance of the canvas rather than the name of the artist has our first consideration in this as in the other groups here catalogued.

Numbers before the names of the artists refer to pictures hanging from time to time in our general exhibitions, and are for the convenience of the visitor who wants to know the artist and to whom titles are relatively unimportant. When the title has real significance, it will be found on a tablet under the picture.

The catalog is arranged to have more than temporary use both here in the Gallery and with inquirers at a distance from New York. For the latter we are always glad to supply additional information, and we welcome correspondence relating to the work of any of the men whose names are included in our lists.



MAHOPAC LANDSCAPE

HOMER D. MARTIN, N.A.

1—GIFFORD BEAL, N.A.

Born New York City, 1879. Elected a Member of the National Academy in 1914. Also member of National Institute of Arts and Letters. Has received many medals and prizes, including the first Hallgarten prize, N.A.D., 1910; 3rd medal (\$1,000.), Corcoran Gallery, 1914; gold medal, Panama-Pacific Exposition, 1915; Philadelphia Water Color Club prize, 1917; Altman prize (\$500.) N.A.D., 1919. His work is included in Metropolitan Museum; Art Institute of Chicago; Syracuse Museum; Newark Museum; San Francisco Art Institute; Cleveland Museum; Phillips Memorial Gallery. Represented by six water colors at the Detroit Institute; and by two water colors and one oil at the Brooklyn Museum. Studios in New York and Rockport, Mass.

2—FRANK W. BENSON, N.A.

Born Salem, Mass., 1862. Pupil Boston Museum School; Boulanger and Lefebvre in Paris. Member, Ten American Painters; National Institute of Arts and Letters. First award, Hallgarten Prize, N.A.D., 1889. Has since won many medals and other prizes for work in both oil and water color. Represented in all principal museums. Paints in Massachusetts and Canada. Specialty, figures out of doors, interiors, duck hunting subjects, in etching, water color and oil.

3—CARLE J. BLENNER

Born Richmond, Virginia, 1864. Pupil of Yale Art School and ateliers of Paris. Has won several prizes for his specialty of decorative flower studies; also paints portraits.

4—ROBERT BRACKMAN

Born Odessa, Russia, 1896. Pupil of National Academy School of New York. A painter with modernistic tendencies that have given him recognition among our younger figure painters in oil, pastel and water color. Summer home, Noank, Connecticut.

5—MAURICE BRAUN

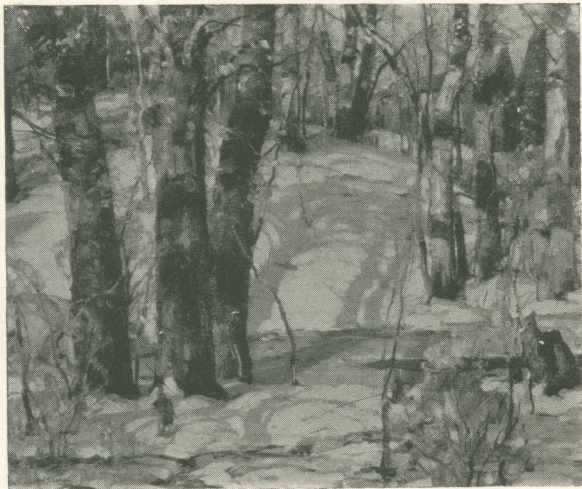
Born Hungary, 1877. Pupil of National Academy in New York. Has won several awards including gold medal at Panama-Pacific Exposition. Specialty, landscapes painted at Lyme, Connecticut, and Point Loma, California.

6—BELMORE BROWNE, A.N.A.

Born Tompkinsville, Staten Island, N. Y., 1880. Pupil of Chase, Carroll Beckwith, and Julian in Paris. Is an Associate of the National Academy, and is also a member of the Salmagundi Club, and the Santa Barbara Art League. Represented in the Memorial Art Gallery, Rochester, N. Y.; National Gallery, Washington, by Ranger Purchase Fund of N.A.D. Famous as explorer and painter of the Canadian Rockies. Author of "Conquest of Mt. McKinley." Lives and paints at Banff, Alberta.

7—EMIL CARLSEN, N.A.

Born Copenhagen, 1853; came to U. S., 1872. Largely self-taught. Elected to National Academy, 1906. Medal of Honor, Panama-Pacific Exposition; gold medals at Pennsylvania Academy; National Academy; and Sesqui-Centennial Exposition. Represented in Metropolitan Museum; National Gallery; Art Institute of Chicago; Brooklyn and other museums. Specialty, marines, wood interiors and still life subjects. Paints in New York and Falls Village, Connecticut.



WINTER GAIETY

JOHN F. CARLSON, N.A.

8—JOHN F. CARLSON, N.A.

Born in Sweden, 1875. Elected to National Academy, 1925. Formerly head of Woodstock School of Art Students' League, and Landscape School, Broadmoor Academy, Colorado Springs. Author of several standard texts on painting. Has won many awards, including Carnegie Prize of N.A.D. in 1918. Represented in Corcoran Gallery; Toledo Museum; Butler Art Institute, Youngstown, Ohio; and other museums. Paints in Woodstock, New York, and Plainfield, New Jersey.

9—JAY CONNAWAY

Born Indiana, 1893. Studied at Art Students' League. Had good war record, after which joined coast guard where he had his opportunity to study the sea. Has painted on Maine Coast and rarely in Brittany. Winner of Hallgarten Prize, N.A.D., 1926. Represented in John Herron Art Institute, Indianapolis; Charleston (West Virginia) Art Association. Specialty, marines.

10—ELLIOTT DAINGERFIELD, N.A.

Born Harper's Ferry, Virginia, 1859; came to New York in 1880. Studied in New York. Elected a member of the National Academy in 1906. Also a member of the New York Water Color Club; Society of American Artists; Lotos Club; National Arts Club. Awards, Silver medal, Panama-American Exposition, Buffalo, 1901; Clarke prize, N.A.D., 1902. Is represented by two examples at Metropolitan Museum; by examples at Toledo Museum; National Gallery; Brooklyn Museum; City Art Museum, St. Louis; Chicago Art Institute; Butler Art Institute, Youngstown, Ohio; mural decorations in Lady Chapel of Church of St. Mary the Virgin, New York.

11—CHARLES H. DAVIS, N.A.

Born Amesbury, Massachusetts, 1856. Studied in Boston and with Boulanger and Lefebvre in Paris. Elected to National Academy in 1906. First award Gold Medal of American Art Association in 1886 and has since taken almost all important prizes throughout the country. Is represented in Metropolitan Museum; Corcoran Gallery; Carnegie Institute; National Gallery; Pennsylvania Academy; Art Institute of Chicago; and many other public and private collections. Specialty, New England landscapes painted at his home in Mystic, Connecticut.



GREY DAY, PERKINS COVE

STANLEY W. WOODWARD

12—THOMAS W. DEWING, N.A.

Born Boston, 1851. Pupil of Boulanger and Lefebvre in Paris. Elected to National Academy, 1888. Member of Ten American Painters. First award, Clarke Prize, N.A.D., 1887; has since taken many medals both at home and abroad. Represented by over twenty examples in Freer Gallery, Washington, and in Corcoran Gallery; National Gallery; Chicago Art Institute; Toledo Museum; Metropolitan Museum; Carnegie Institute; Addison Gallery, Phillips Academy, Andover; and in many other museums including the Luxembourg, Paris.

13—PAUL DOUGHERTY, N.A.

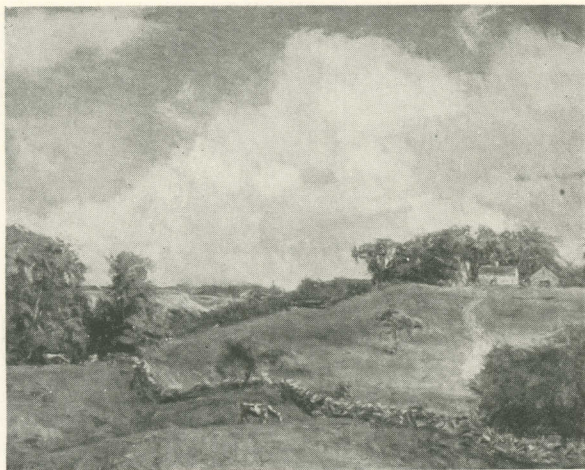
Born Brooklyn, New York, 1877. Self taught in Paris, London, Florence, Venice and Munich. Elected to National Academy in 1907. Among his awards are Inness Gold Medal, N.A.D., 1913; Gold Medal, Panama-Pacific Exposition, 1915; Carnegie Prize, N.A.D., 1915; and Altman Prize of \$1,000., N.A.D., 1918. Represented in Metropolitan Museum; Chicago Art Institute; National Gallery; Carnegie Institute; Corcoran Gallery; Brooklyn Museum; City Art Museum, St. Louis; Phillips Memorial Museum, Washington; Memorial Gallery, Rochester; Addison Gallery, Phillips Academy, Andover, and many other museums. Specialty, marines and occasional landscapes.

14—CHARLES WARREN EATON

Born Albany, New York, 1857. Pupil of National Academy and Art Students' League. Hon. mention, Paris Exposition, 1900; Inness Gold Medal, N.A.D., 1904; Silver Medal, St. Louis Exposition, 1904; Gold Medal, Paris Salon, 1906. Represented National Gallery; Cincinnati Museum; Brooklyn Museum; Montclair (New Jersey) Museum, and several others. Specialty, landscapes with pine tree motive; Bruges landscapes.

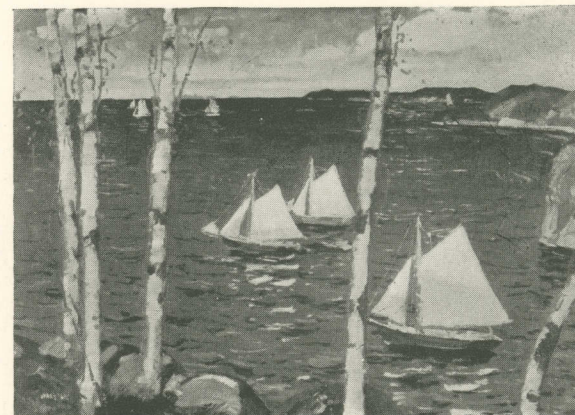
15—FREDERICK C. FRIESEKE, N.A.

Born Owosso, Michigan, 1874. Studied at Art Institute of Chicago, Art Students' League, N. Y., and with Constant, Laurens and Whistler in Paris. Elected to National Academy, 1914; Chevalier of Legion of Honor, France. First award, Silver medal, St. Louis Exposition, and gold medal, Munich, 1904. Winner of Grand Prize, Panama-Pacific Exposition, 1915; French gold medal, Art Institute of Chicago, 1920; Potter Palmer gold medal, Art Institute of Chicago, 1920. Represented in Luxembourg Museum, Paris; Metropolitan and sixteen other American museums. Has lived in Paris for the last twenty years. Specialty, figure subjects,—interiors and in sunlight.



A CLEARING IN JUNE

CHARLES H. DAVIS, N.A.



OUT OF ROCKPORT

JONAS LIE, N.A.

16—DANIEL GARBER, N.A.

Born Indiana, 1880. Pupil of Cincinnati Art Academy under Nowotny; Pennsylvania Academy of Fine Arts under Anshutz. Elected to the National Academy in 1913. In 1903, won Cresson Scholarship at the Pennsylvania Academy, and in 1909 won the first Hallgarten prize at the N.A.D. Since then he has won many prizes and medals, including the first Altman prize (\$1,000.) at the N.A.D. in 1927. He is represented in most of the leading museums throughout the country, including the Corcoran Gallery; Cincinnati Museum; Art Institute of Chicago; City Art Museum, St. Louis; Carnegie Institute; St. Paul Institute of Arts; Pennsylvania Academy of the Fine Arts; National Gallery; Metropolitan Museum; as well as many private collections. He lives in Lumberville, Bucks County, Pennsylvania, where he does most of his work.

17—GORDON GRANT

Born San Francisco, California, 1875. Pupil of Heatherley's and Lambeth's Schools in London. Member American Water Color Society; Society of Illustrators; Salmagundi Club; Allied Artists of America. Painter of original of widely copied "Old Ironsides." Specialty, marines with ships.

18—ALBERT GROLL, N.A.

Born New York, 1866. Studied in Munich. Elected to National Academy, 1910. Among important awards are Silver medal, St. Louis Exposition, 1904; Sesnan Medal, Pennsylvania Academy, 1906; Inness gold medal, N.A.D., 1912; medals Buenos Aires and Santiago Expositions, 1910. Represented in National Gallery; Brooklyn Museum; Metropolitan Museum; Boston Museum; Carnegie Institute and other museums. Specialty, Arizona and New Mexico desert subjects.

19—CHILDE HASSAM, N.A.

Born Boston, 1859. Studied in Boston and Paris. Member of Ten American Painters; National Institute of Arts and Letters. Elected to National Academy, 1906. First awards, Bronze medal, Paris Exposition, 1892. Has since won every important prize, including Gold medal of Honor, Pennsylvania Academy, 1920; and Gold medal, Sesqui-Centennial Exposition, 1926. Represented by five canvases in Metropolitan Museum, by several examples in the Addison Gallery, Phillips Academy, Andover, and by work in fifteen other museums in America and by "French Block—Avenue of the Allies" in the Luxembourg, Paris.

20—CHARLES W. HAWTHORNE, N.A.

Born Maine, 1872. Studied at National Academy and Art Students' League, and with William M. Chase. Elected to National Academy, 1911. Member, Société Nationale des Beaux Arts, Paris; National Institute of Arts and Letters. Won Hallgarten Prize at N.A.D., 1904. Has since received many awards including highest offered by public galleries throughout the country. Represented by "The Trousseau" in the Metropolitan Museum; three canvases at Chicago Art Institute; and individual examples in some twenty other public collections.

21—ALDRO T. HIBBARD, A.N.A.

Born Falmouth, Massachusetts, 1886. Pupil of DeCamp, Major and Tarbell. Associate Member, National Academy; Boston Guild of Artists; Sr. Borolph Club, Gloucester and Rockport Art Associations. Won first Hallgarten Prize, N.A.D., 1922; Sesnan Gold Medal, Pennsylvania Academy, 1928; second Altman Prize, N.A.D., 1928. Represented in Boston Art Museum; Metropolitan Museum. His "Ice Pond" purchased by Ranger Fund, N.A.D., presented to Addison Gallery, Philips Academy, Andover, Mass.

22—EUGENE HIGGINS, N.A.

Born Kansas City, Missouri, 1874. Pupil of Julien Academy and L'Ecole des Beaux-Arts in Paris. Member of National Academy; New York Water Color Club; Salmagundi Club; National Arts Club. Represented in Milwaukee Art Institute and Los Angeles Museum. Painter of the common people, both here and abroad.

23—CARL LAWLESS

Born in Illinois, 1896. Pupil Pennsylvania Academy, Chicago Academy. Member, Connecticut Academy of Fine Arts; Philadelphia Art Alliance; Fellowship, Pennsylvania Academy. Awards, Cresson Travelling Scholarship, Pennsylvania Academy, 1921; Fellowship Prize, Pennsylvania Academy, 1923; Murphy Memorial Prize, N.A.D., 1923. Represented in National Academy; Art Institute of Chicago; Springfield (Mass.) Art Association; Columbus Academy of Art. Paints both summer and winter landscapes. Summer studio at Mystic, Conn.

24—ERNEST LAWSON, N.A.

Born in California, 1873. Studied in Kansas City; Art Students' League of New York; and in Paris. Elected member of National Academy, 1917. Also a member of Institute of Arts and Letters, and New Society of Artists. Was awarded the First Hallgarten prize, N.A.D., 1908, and has since then won many important prizes, including the First Prize, Pittsburgh International Exposition, in 1921. Represented in Metropolitan Museum; National Gallery; Corcoran Gallery and some twelve other museums throughout the United States.



WINDMILL AT SUNDOWN CHILDE HASSAM, N.A.



YELLOW AND BLUE F. C. FRIESEKE, N.A.

25—HARRY LEITH-ROSS, A.N.A.

Born 1886. Pupil of Birge Harrison and John F. Carlson; and Laurens in Paris. Associate Member, National Academy. Also a member of Connecticut Academy of Fine Arts; Allied Artists of America. His prizes include the Porter Prize, Salmagundi Club, 1915; Landscape Prize, New Haven Paint and Clay Club, 1924; and Ranger Purchase Prize, N.A.D., 1927. He is a prominent member of the Woodstock Art Colony, and is a contributor to all current exhibitions.

26—HAYLEY LEVER, A.N.A.

Born Adelaide, South Australia, 1876. Studied in Paris, London and New York. Elected Associate, National Academy, 1925. Also member of Royal British Artists, London; Royal Institute of Oil Painters, London; Royal West of England Academy; National Arts Club; New Society of Artists. First award, Honorable Mention, Carnegie Institute, 1913. Has since won many medals and prizes. Represented in Metropolitan Museum; Corcoran Gallery; Detroit Institute of Arts, and other museums here and abroad. Lived in England until about fifteen years ago painting on Cornish Coast. Now works at Gloucester, Mass., and Caldwell, N. J.

27—JONAS LIE, N.A.

Born Norway, 1880. Pupil of National Academy and Art Students' League of New York. Member of National Academy; Salmagundi Club; New Society of Artists; National Arts Club; Century Club. First award, first Hallgarten prize, N.A.D., 1914. Since then he has won many medals and prizes. Represented in Carnegie Institute; Metropolitan Museum; Art Institute of Chicago; Luxembourg Museum, Paris; Addison Gallery, Phillips Academy, Andover, and many other important museums. Group of thirteen paintings of Panama Canal recently presented to Government as memorial to General Goethals and installed at West Point. Paints at Rockport, Massachusetts, and Saranac Lake, New York.

28—ARTHUR MELTZER

Born Minnesota, 1893. Pupil of Robert Koehler and Pennsylvania Academy of the Fine Arts. Member, Fellowship, Pennsylvania Academy; Philadelphia Sketch Club; Philadelphia Alliance; Society of Mystic (Connecticut) Artists. First award, Cresson Travelling Scholarship, Pennsylvania Academy, 1921, and since then has won prizes and honorable mention in Philadelphia exhibitions. Represented in Carlisle Art Museum; Columbus Gallery of Fine Arts. Studios at Langhorne, Pa., and Mystic, Conn.

29—HERBERT MEYER

Born New York City, 1882. Pupil of Art Students' League of New York; Twachtman and DuMond. Member, Salmagundi Club; New York Architectural League; Allied Artists of America; New York Water Color Club; American Water Color Society. Paints in the summer at Dorset, Vermont. Specialty, decorative figures and landscapes in oil, pastel and water color.

30—H. DUDLEY MURPHY

Born Massachusetts, 1867. Pupil of Boston Museum School and Laurens in Paris. Member of Boston Art Club; Guild of Boston Artists; Salmagundi Club; National Arts Club; Massachusetts State Art Commission. First award, bronze medal, Panama-American Exposition, Buffalo, 1901. Since then has won many prizes and medals. Represented in Art Institute of Chicago; Albright Art Gallery; Dallas (Texas) Museum of Fine Arts; Cleveland Art Museum and others.

31—JEROME MYERS, N.A.

Born Virginia, 1867. Pupil of Cooper Union and Art Students' League of New York. Member of National Academy, and New Society of Artists. Awards, bronze medal, St. Louis Exposition, 1904; Clarke prize, N.A.D., 1919. Represented in Metropolitan Museum; Brooklyn Museum; Chicago Art Institute; Memorial Art Gallery, Rochester, N. Y.; Phillips Memorial Gallery; Milwaukee Art Institute; and others. Specialty, New York street scenes.



LENNOX GAP

CHAUNCEY F. RYDER, N.A.

32—JOHN NOBLE, N.A.

Born Kansas, 1874. Pupil Cincinnati Academy of Fine Arts; Laurens and Julien Academy in Paris, Academy des Beaux Arts, Brussels. Member, National Academy, Allied Artists, London; Independents of Paris; Connecticut Academy of Fine Arts. Awards, Salmagundi Purchase Prize, 1922; W. A. Clarke prize, Corcoran Gallery, 1924; Carnegie prize, N.A.D. Represented in Delgado Museum, New Orleans; Academy of Design, Rhode Island; Dallas (Texas) Museum; Wichita (Kansas) Museum. Early work mostly western landscapes. Now paints poetic landscapes and marines from a very personal viewpoint.

33—IVAN G. OLINSKY, N.A.

Born in Russia, 1878. Studied at National Academy, and in France and Italy. Member of National Academy; Salmagundi Club; National Arts Club; Lotos Club; Allied Artists of America. First award, Clarke prize, N.A.D., 1914. Since then he has won many prizes. Is represented at Detroit, Omaha, Dallas, Youngstown, etc. Prominent figure and portrait painter. Studio in New York and Lyme, Connecticut.

34—WALTER L. PALMER, N.A.

Born Albany, N. Y., 1854. Pupil of F. E. Church at Hudson, N. Y., and Carolus-Duran in Paris. Elected member of National Academy in 1897. Also a member of New York State Fine Arts Commission; New York Water Color Club; Salmagundi Club; Union International des Beaux-Arts et des Lettres. First award, Second Hallgarten Prize, N.A.D., 1887. Since then he has won many prizes and medals for his work in oil and water color. Represented at Buffalo Fine Arts Academy; Public Gallery, Richmond, Indiana; Omaha Art Society; Metropolitan Museum; Boston Museum of Fine Arts. One of our oldest and best known snow painters. Has lived all his life at Albany, and finds his subjects near at hand in the Mohawk Valley.

35—OGDEN M. PLEISSNER

Born Brooklyn, New York, 1905. Pupil of F. J. Boston, George Bridgman, Frank V. DuMond. Member of Art Students' League of New York; Salmagundi Club; National Arts Club; Brooklyn Society of Artists. Awards, Second prize, National Arts Club, 1928; First prize, National Arts Club, 1929. Is represented at the University of Nebraska. Paints Wyoming and New England landscapes.

36—E. W. REDFIELD

Born Bridgeville, Delaware, 1869. Pupil of Pennsylvania Academy of Fine Arts; Bouguereau and Robert-Fleury in Paris. Member, National Institute of Arts and Letters. First prize, Medal, Art Club of Philadelphia, 1896. Since then he has won many prizes, including Palmer Gold Medal (\$1,000.), Art Institute of Chicago, 1913; gold medal (\$1,500.) Carnegie Institute, Pittsburgh, 1914; hors concours, Panama-Pacific Exposition, San Francisco, 1915; Altman prize (\$1,000.) N.A.D., 1919. He is represented in almost every important museum throughout the country, as well as the Luxembourg Museum, Paris, and in many private collections. Specialty, winter and spring landscapes, most of them done in Centre Bridge, Bucks County, Pennsylvania, where he lives.



THE SUNG JAR

EMIL CARLSEN, N.A.

37—CHAUNCEY F. RYDER, N.A.

Born Danbury, Connecticut, 1868. Pupil of Art Institute of Chicago; Julian Academy, Collin and Laurens in Paris. Elected a member of the National Academy in 1920. First award, Honorable Mention, Paris Salon, 1907. Since then he has won many prizes and medals for his work in oil, water color and etching. Is represented by two examples in the Metropolitan, and in Art Institute of Chicago; Corcoran Gallery; Minneapolis Institute of Arts; National Gallery; New York Public Library and many others, including the Cabinet des Estampes, Bibliotheque Nationale, Paris. Summer home at Wilton, New Hampshire, where most of his work is painted.

38—IRVING WILES, N.A.

Born Utica, New York, 1861. Pupil of his father, L. M. Wiles; of Chase and of Beckwith in New York; Carolus-Duran in Paris. Elected member of National Academy in 1897; also a member of National Institute of Arts and Letters; National Association of Portrait Painters. Was awarded the third Hallgarten prize, N.A.D., 1886; gold medal, Panama-American Exposition, Buffalo, 1901; gold medal, Buenos Aires Exposition, 1910; Proctor Portrait prize, N.A.D., 1913; and many others. Represented by paintings in Corcoran Gallery; National Gallery, etc.; and by portraits in City Hall, Brooklyn; Military Academy, West Point; Metropolitan Museum; State Department, Washington; Chase National Bank; Banker's Club, N. Y.; University of Berlin, Germany. Specialty: Portraits and Marine Studies.

39—F. BALLARD WILLIAMS, N.A.

Born Brooklyn, New York, 1871. Pupil of Cooper Union and National Academy in New York. Elected member of National Academy in 1909. Awards, Bronze medal, Panama-American Exposition, Buffalo, 1901; Inness prize, Salmagundi Club, 1907; Isidor gold medal, N.A.D., 1909. Represented by two examples in National Gallery and Metropolitan Museum; by single examples in Albright Art Gallery; Brooklyn Museum; Montclair Art Museum; City Art Museum, St. Louis; Chicago Art Institute; Milwaukee Art Institute, and numerous other public and private collections throughout the country.

40—STANLEY W. WOODWARD

Born Massachusetts, 1890. Pupil of Eric Pape School of Art; School of the Boston Museum of Fine Arts; Pennsylvania Academy of the Fine Arts. Member: Chicago Society of Etchers; Copley Society; Fellowship, Pennsylvania Academy of Fine Arts; Allied Artists of America; Guild of Boston Artists. Awards, second Hallgarten prize, N.A.D., 1925; Hammond purchase prize (\$150.), New York Water Color Club and American Water Color Society, 1927; Anniversary prize, Springfield Art League (\$250.), 1928. Represented in University of Michigan; Malden (Mass.) Public Library; Concord Art Association; Walker Gallery, Bowdoin College, Brunswick, Maine; St. Marks School, Groton, Mass.; Public Library, Wellesley Hills, Mass. Studio at Ogunquit, Maine.

In addition to the work of the artists listed on the preceding pages, occasional examples by other men and in special departments will, from time to time, be found in our collection.

OCCASIONAL EXHIBITORS

- 41—CLIFFORD W. ASHLEY
- 42—KENNETH BATES
- 43—FRANCIS I. BENNETT
- 44—LESTER BORONDA
- 45—ROY BROWN
- 46—GEORGE M. BRUESTLE
- 47—GEORGE DEFOREST BRUSH
- 48—ETTORE CASER
- 49—C. K. CHATTERTON
- 50—E. IRVING COUSE
- 51—BRUCE CRANE
- 52—CHARLES C. CURRAN
- 53—CHAS. MELVILLE DEWEY
- 54—JOHN FOLINSBEE
- 55—LAUREN FORD
- 56—W. GRANVILLE-SMITH
- 57—ROCKWELL KENT
- 58—GEORGE LUKS
- 59—GARI MELCHERS
- 60—RICHARD E. MILLER
- 61—F. J. MULHAUPT
- 62—HOBART NICHOLS
- 63—MALCOLM PARCELL
- 64—HENRY R. POORE
- 65—WILLIAM S. ROBINSON
- 66—HENRY B. SELDEN
- 67—ROBERT SPENCER
- 68—RENWICK TAYLOR
- 69—ANTHONY THIEME
- 70—LARS THORSEN
- 71—WALTER UFER
- 72—HORATIO WALKER
- 73—FREDERICK J. WAUGH
- 74—GUY WIGGINS

WATER COLORISTS

- 75--FAUST AZZARETTI
- 1—GIFFORD BEAL
- 2—FRANK W. BENSON
- 3—ROBERT BRACKMAN
- 76—FRANK A. BROWN
- 77—SIDNEY M. CHASE
- 78—FLOYD CLYMER
- 79—JOHN COOK
- 80—ARTHUR B. DAVIES
- 81—WARREN DAVIS
- 82—PAUL L. GILL
- 19—CHILDE HASSAM
- 83—JOHN LAVALLE
- 84—FREDERICK LOWELL
- 85—DODGE MACKNIGHT
- 29—HERBERT MEYER
- 86—ELIOT O'HARA
- 87—J. OLAF OLSON
- 34—WALTER L. PALMER
- 88—JOSEPH PENNELL
- 89—A. SHELDON PENNOYER
- 90—MAURICE PRENDERGAST
- 91—A. L. RIPLEY
- 92—HARRY SUTTON, JR.
- 93—EARLE B. WINSLOW

DECEASED PAINTERS

- 94—GEORGE BELLOWS
- 95—RALPH A. BLAKELOCK
- 96—MAX BOHM
- 97—MARY CASSATT
- 98—CARLTON T. CHAPMAN
- 99—WILLIAM M. CHASE
- 80—ARTHUR B. DAVIES
- 100—RUGER DONOHO
- 101—FRANK DUVECK
- 102—THOMAS EAKINS
- 103—GEORGE FULLER
- 104—ROBERT HENRI
- 105—WINSLOW HOMER
- 106—WILLIAM H. HOWE
- 107—JOHN HUFFINGTON
- 108—WILLIAM MORRIS HUNT
- 109—GEORGE INNESS
- 110—HOMER D. MARTIN
- 111—WILLARD L. METCALF
- 112—J. FRANCIS MURPHY
- 90—MAURICE PRENDERGAST
- 113—HENRY W. RANGER
- 114—FREDERICK REMINGTON
- 115—THEODORE ROBINSON
- 116—CHARLES M. RUSSELL
- 117—ALBERT P. RYDER
- 118—JOHN SINGER SARGENT
- 119—GARDNER SYMONS
- 120—ABBOTT H. THAYER
- 121—DWIGHT W. TRYON
- 122—JOHN H. TWACHTMAN
- 123—J. ALDEN WEIR
- 124—JAMES McNEILL WHISTLER
- 125—ALEX H. WYANT

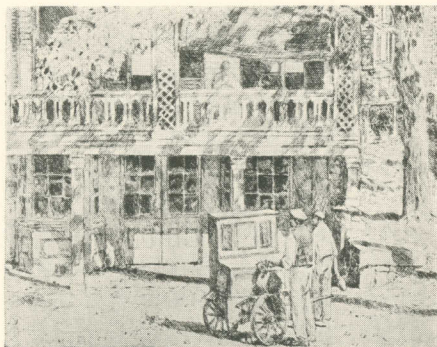
PAINTERS OF PORTRAITS

- 126—WAYMAN ADAMS
- 127—LOUIS BETTS
- 128—SIDNEY DICKINSON
- 129—CHARLES HOPKINSON
- 130—ERNEST L. IPSEN
- 131—WILLIAM JAMES
- 83—JOHN LAVALLE
- 33—IVAN G. OLINSKY
- 132—LEOPOLD SEYFFERT
- 38—IRVING WILES
- 133—FRED W. WRIGHT

COLONIAL PORTRAIT PAINTERS

- 134—JOSEPH BLACKBURN
- 135—JOHN SINGLETON COPLEY
- 136—RALPH EARLE
- 137—HENRY INMAN
- 138—MATTHEW HARRIS JOUETT
- 139—S. F. B. MORSE
- 140—CHARLES WILLSON PEALE
- 141—JAMES PEALE
- 142—JAMES SHARPLES
- 143—JOHN SMIBERT
- 144—GILBERT STUART
- 145—THOMAS SULLY
- 146—JEREMIAH THEUS
- 147—JOHN TRUMBULL
- 148—JOHN VANDERLYN
- 149—BENJAMIN WEST
- 150—JOHN WOOLLASTON

Prices on pictures in our collection are quoted on request. In general, for oils in the larger sizes by living artists, they average from about five hundred dollars up. Water colors and the smaller oils may be had for about one hundred dollars up.



TOBY'S, COS COB CHILDE HASSAM, N.A.

OUR ETCHING DEPARTMENT

established only two years ago has already won wide recognition for the quality and variety of the

PRINTS BY AMERICAN ETCHERS

at all times to be found in our portfolios.

Our Catalog of Etchings gives a list of the artists whose prints we handle, and indicates, through the reproduction of a typical etching and a list of subjects, the kind of thing each man does.

This catalog, priced at twenty-five cents, will be mailed on request.

M. M. A.
LIBRARY
RECEIVED

BC
107.1
N12
v. 4

OCT 22 1930