

Porto Rico and St. Thomas  
Exhibition of Paintings

*By Rachel Hartley*

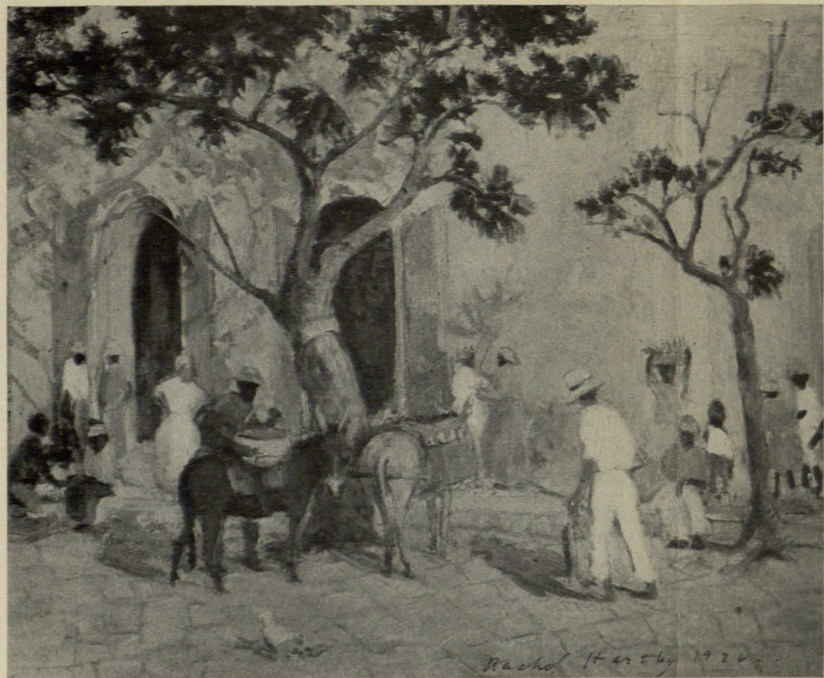
NOVEMBER 23--DECEMBER 6, 1926

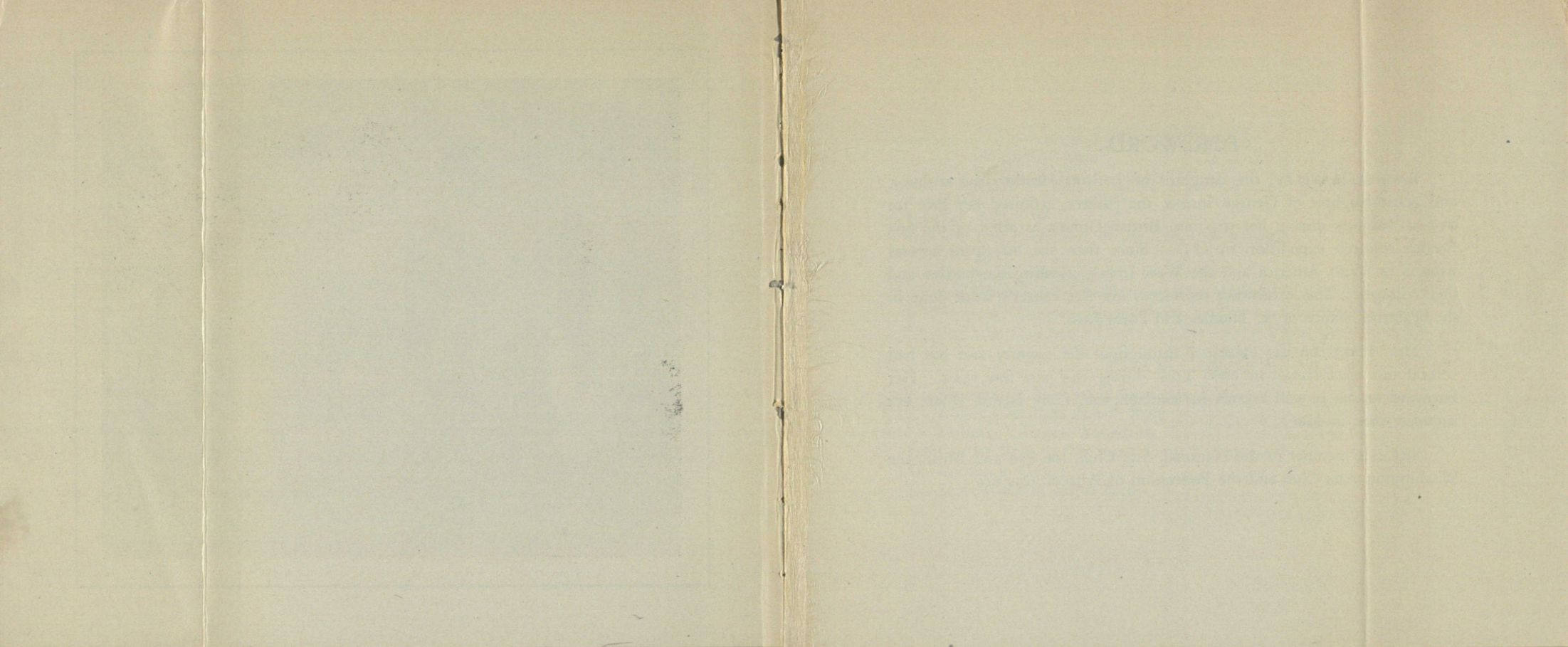


MACBETH GALLERY

15 East 57th Street

New York City





## FOREWORD

RACHEL HARTLEY, the daughter of J. Scott Hartley, the sculptor, and granddaughter of George Inness, the painter, acquired her love for tropical subjects during her trip into British Guiana as artist of the first Beebee research expedition in 1916. Since then she has spent several winters in South America and the West Indies, painting the natives and their villages. This exhibition represents her last winter's work done in the beautiful islands of St. Thomas and Porto Rico.

MISS HARTLEY has exhibited throughout the country and has had several one man shows in New York during the past few years. Her Barnyard Studio is well known in Southampton, Long Island, where her summer work is done.

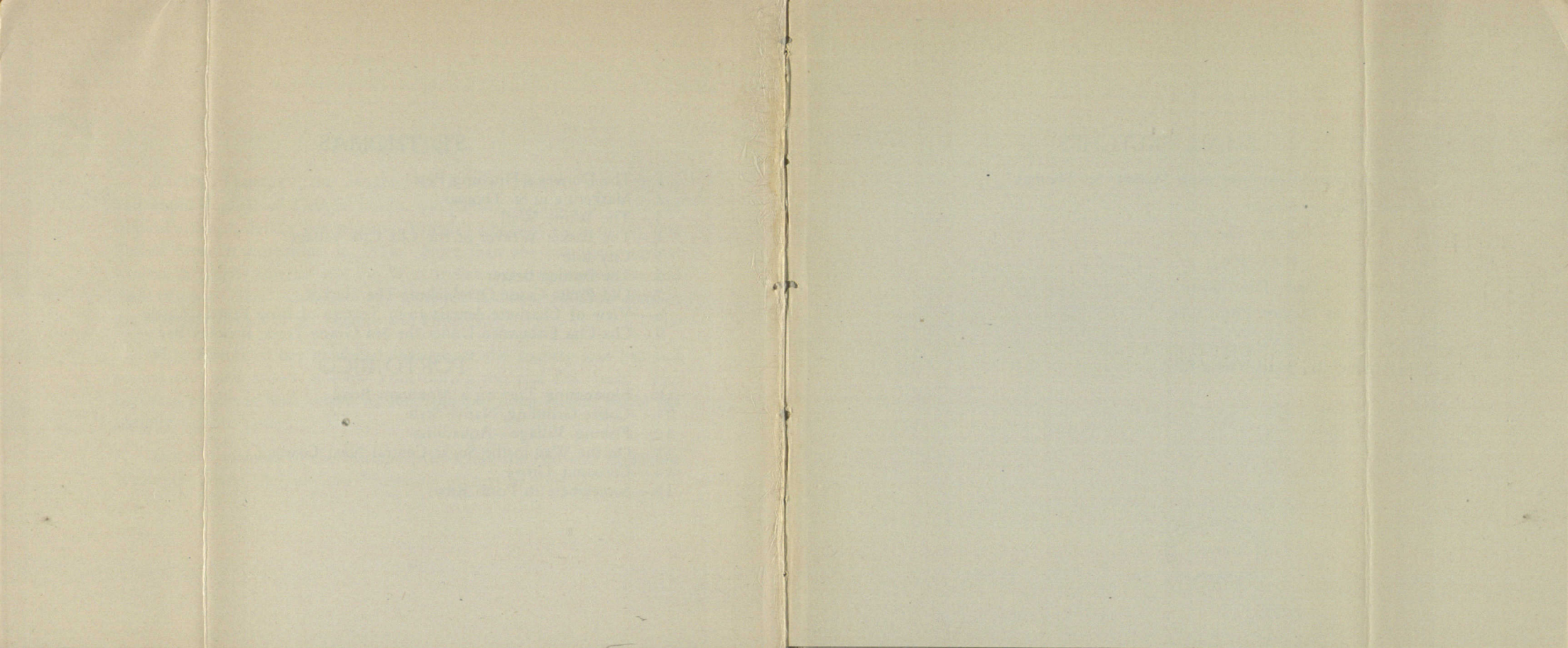
SHE is a member of the National Arts Club, the Pen and Brush, the Washington Arts Club and the Federation of Arts of America.

## ST. THOMAS

- 1.—The Donkey's Hitching Post
- 2.—Marketing in St. Thomas
- 3.—The White Wall
- 4.—The Basket Weaver of the Cha Cha Village
- 5.—City Life
- 6.—The Burden Bearer
- 7.—Old Pirate Castle Overlooking The Harbor
- 8.—View of Charlotte-Amelia from Terrace of Blue Beard's Castle
- 9.—Cha Cha Fishermen Under the Sea Grape Trees, Brewers Bay

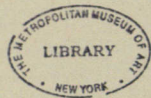
## PORTO RICO

- 10.—Blossoming Tree on a Mountain Road
- 11.—Coffee Grinding, Native Style
- 12.—Fishing Village—Aquadillia
- 13.—On the Way to the Sugar Central Near Coamo
- 14.—Cocoanut Grove
- 15.—Somewhere in Porto Rico



## SMALL SKETCHES

- 16.—Our Cookie Returning from Market, St. Thomas
- 17.—St. Thomas Market
- 18.—A Side Street, St. Thomas
- 19.—Victim of a Hurricane
- 20.—Native Thatch, Porto Rico
- 21.—San Juan Market, Porto Rico
- 22.—A Native Mother
- 23.—Around the Bend, Porto Rico



BC 107.1  
M12  
v.3

