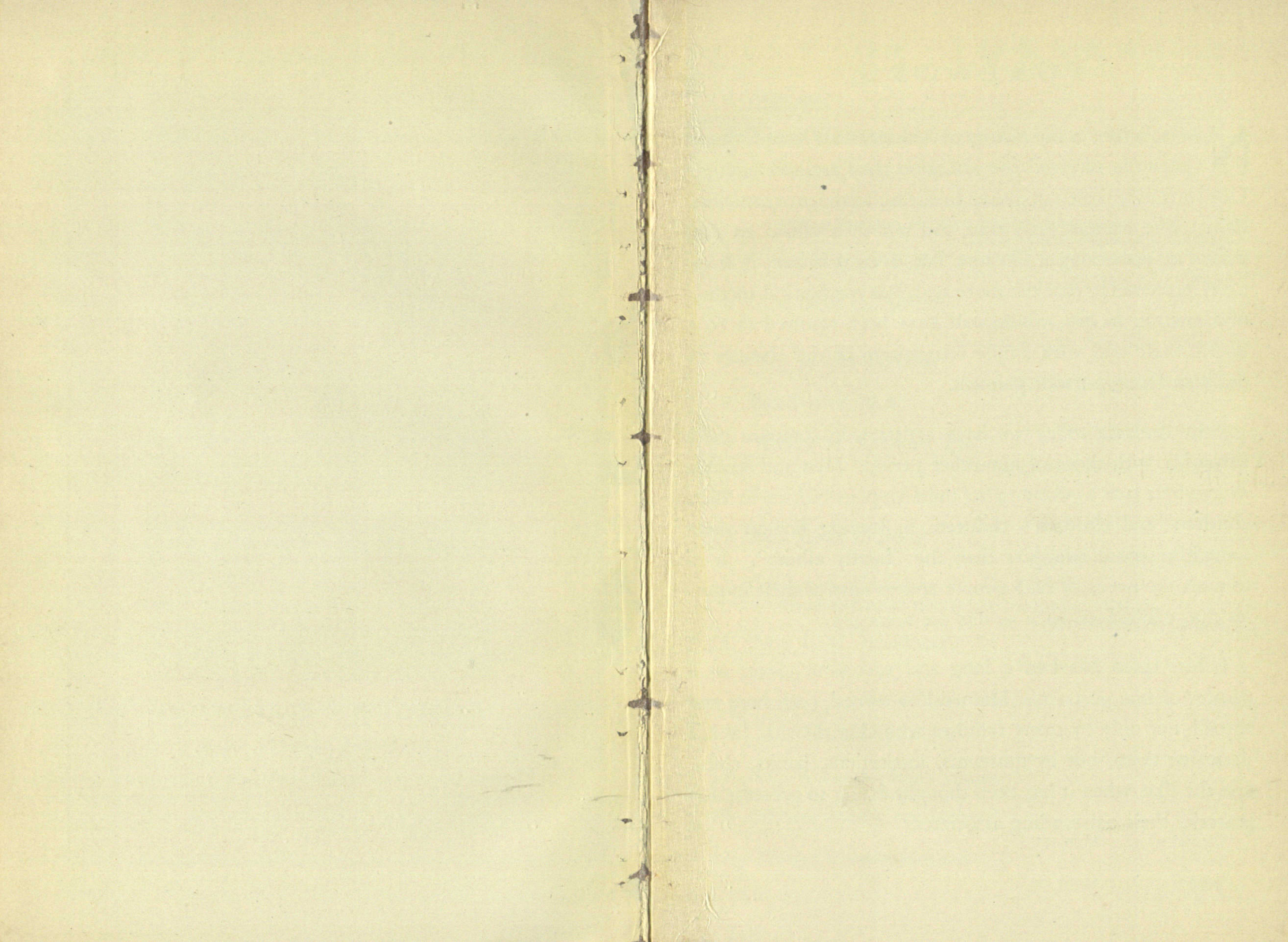




EXHIBITION *of* PORTRAITS *by*
ERNEST L. IPSEN, N. A.

NOVEMBER 27th TO DECEMBER 10th, 1928

MACBETH GALLERY
15 EAST 57th STREET, NEW YORK



FOREWORD

NEVER before in the history of American art have Colonial portraits received the attention they are now getting. Our forebears were not averse to sitting to the artists of their time. The camera, it is true, did not then afford an easy means of preserving a likeness, but, even if it had, it is entirely presumable that the more real, less mechanical method of a portrait in oils, would still have been resorted to on a liberal scale and with ample recognition of the abilities of the then living portrait painters.

In America today we have artists who compare most favorably with those of any other period. Men and women everywhere are awakening to their responsibilities to their children and children's children, in leaving behind them something more adequate than the "family album". It is to meet the needs of such people and to answer their inquiries that exhibitions such as this are arranged.

Mr. Ipsen has had a long and successful career as a painter of fine portraits. His work is owned, both here and abroad, not only by many families who cherish what he has done for them, but by museums, institutions, banks, clubs, and the like, when it has been thought fitting to preserve for posterity their outstanding associates.

LIST OF PORTRAITS

- 1 "Empire"
 - 2 Harry Watrous, N.A.
 - 3 A Song of Long Ago
 - 4 Rev. Arthur Cushman McGiffert, D.D., LL.D.
Former President of Union Theological Seminary
Lent by Union Theological Seminary
 - 5 Cass Gilbert, P.N.A.
Lent by Mrs. Cass Gilbert
 - 6 Miss Irene H. Sutcliffe
Lent by the Nurses' Alumnae
Association of the New York Hospital
 - 7 Mrs. William Sloane
Lent by William Sloane, Norfolk, Va.
 - 8 Ben Foster, N.A.
Lent by National Arts Club
 - 9 Arthur H. Scribner, Esq.
Lent by Mrs. Arthur H. Scribner
 - 10 Rev. Henry van Dyke, D.D., LL.D., D.C.L. Oxford
Lent by the Princeton Club
 - 11 Mrs. Earle E. Besse
Lent by Dr. Earle E. Besse
 - 12 George A. Plimpton, LL.D., L.H.D.
President Barnard College; Trustee Amherst College
Lent by Amherst College
 - 13 Mrs. L. H. Baekland
Lent by Dr. L. H. Baekland
- GROUP OF PASTELS
- 14 Mrs. Harold Howland
Lent by Mr. Harold Howland
 - 15 Dr. William Henry Grant
 - 16 Master John Grey Hebard
Lent by Mrs. L. P. Hebard
 - 17 Master Vernon Hebard
Lent by Mrs. L. P. Hebard



BC 107.1

M12

v.3