

PAINTINGS OF GLACIER
NATIONAL PARK

BY

CHARLES WARREN EATON

DECEMBER 13, 1921

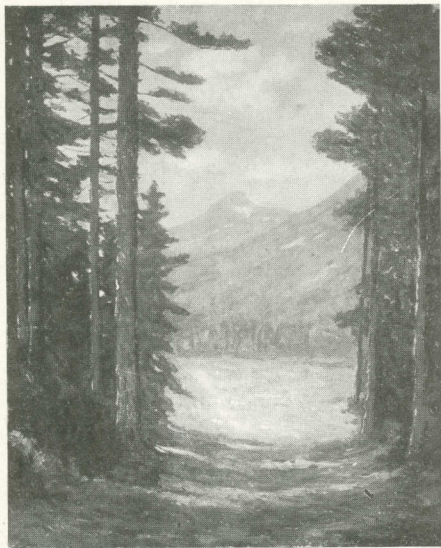
TO

JANUARY 2, 1922

THE MACBETH GALLERY

450 FIFTH AVENUE

NEW YORK CITY



THROUGH THE WOODS

TITLES OF PAINTINGS

- 1 *Going-to-the-Sun Mountain*
- 2 *The Shadow of Mount Rockwell*
- 3 *Near Two Medicine Lake*
- 4 *Trick Falls*
- 5 *St. Mary's Lake*
- 6 *The Opal Moon*
- 7 *Two Medicine Lake*
- 8 *Snowy Summits*
- 9 *Through the Woods*
- 10 *Mount Rockwell*

TITLES OF PAINTINGS

- 11 *The Screen of Firs*
- 12 *Near Going-to-the-Sun Camp*
- 13 *At Sundown—Two Medicine Valley*
- 14 *Morning Mists*
- 15 *Rising Wolf Mountain*
- 16 *The Range at Sunset*
- 17 *A Flowery Upland*
- 18 *Brink of the Valley*
- 19 *The Range from Blackfoot Reservation*
- 20 *Two Medicine Valley*

Coming Events

JANUARY 3rd-23rd

CALIFORNIA LANDSCAPES

BY

F. BALLARD WILLIAMS, N.A.

NEW ENGLAND STREETS

BY

FELICIE WALDO HOWELL

PAINTINGS OF SOUTH AMERICA

BY

E. W. DEMING

JAN. 24th-FEB. 13th

TWELFTH ANNUAL EXHIBITION
OF "THIRTY BY THIRTY"

Annual Exhibition

SOCIETY OF ANIMAL PAINTERS
AND SCULPTORS

