

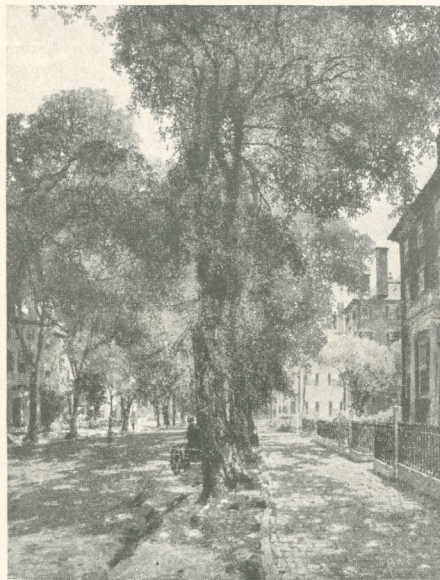
NEW ENGLAND STREETS

BY

FELICIE WALDO HOWELL

JANUARY 3rd to 23rd
1922

THE MACBETH GALLERY
450 FIFTH AVENUE
NEW YORK CITY



CHESTNUT STREET, SALEM

F O R E W O R D

THE New England streets were painted because association with them is congenial and appealing. They were not painted because they need restoring like some half blotted out record of a civilization past and gone. They were done because it is pleasant to put down something which has retained its early charm and individuality, and which gives one the assurance of permanence.

One knows that Chestnut Street with its proud mansions, all built in the heyday of our colonial architecture, and its rows of towering elms, is the same street grown older, that it was a hundred years ago. One is quite as sure too that High Street, Newburyport, with its leisure and elegance, was the same yesterday. While the byways and elm shaded streets of Ipswich, suggest all the repose of another generation.

And the narrow streets of Marblehead, which climb uphill and down and turn and wind so crookedly, need no dreamer to find the charm and quaintness of former days. One has the impression of flowers where there might be sidewalks, and roofs where the town might end. Duncan Street, Gloucester, with its block shops and sail lofts, still leads one down to the sea, where fishing vessels lie at their moorings, as they always have.

In each town one lingers on some street beside which the village green has withstood the borrowings of time. It may be a small plot like the Manchester Square with its elm and its open belfry, or it may be larger like the Boston Common bounded by the thoroughfares of a great city. But always the atmosphere of these New England streets seems like a refreshing intermission in our modern life, inviting one to return.

TITLES OF PAINTINGS

1. <i>Chestnut Street, Salem</i>	\$1200
2. <i>High Street, Newburyport</i>	600
3. <i>Looking Toward South and Middle Streets, Marblehead</i>	600
4. <i>Beacon Street, Boston</i>	400
5. <i>High Street, Ipswich</i>	400
6. <i>Duncan Street, Gloucester</i>	400
7. <i>Corner Park and Tremont Streets, Boston</i>	400
8. <i>Washington Street, Marblehead</i>	300
9. <i>Federal Street, Salem</i>	300
10. <i>Tucker Street, Marblehead</i>	200
11. <i>By the Square, Manchester</i>	200
12. <i>Lafayette Corner, Marblehead</i>	175
13. <i>Off High Street, Ipswich</i>	175
14. <i>The "Old Alley Steps," Marblehead</i>	100
15. <i>Lee Street, Marblehead</i>	100

Twelfth Annual Exhibition

THIRTY PAINTINGS

BY

THIRTY ARTISTS

WILL BE HELD FROM

JANUARY 24TH TO FEBRUARY 13TH

It will include paintings by

BRUCE CRANE	GEORGE INNESS
ARTHUR B. DAVIES	WILLARD L. METCALF
CHARLES H. DAVIS	J. FRANCIS MURPHY
LOUIS PAUL DESSAR	ABBOTT H. THAYER
THOMAS W. DEWING	D. W. TRYON
F. C. FRIESEKE	J. H. TWACHTMAN
ALBERT GROLL	J. ALDEN WEIR
ROBERT HENRI	A. H. WYANT

AND OTHERS

Illustrated catalog mailed on request

