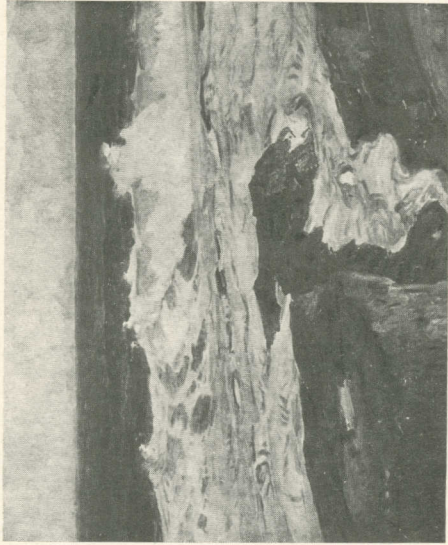


WEST INDIAN MARINES
BY
FREDERICK J. WAUGH, N. A.

NOVEMBER 1 *to* 19, 1921

The MACBETH GALLERY
450 FIFTH AVENUE NEW YORK
at Fortieth Street



MYSTERY OF THE TROPICS

FOREWORD

IF anticipation has greater joy than fulfillment my West Indian experience must be unique.

Enthusiasm grew apace as we entered those clear lapis seas of the South Atlantic and Caribbean. It grew by leaps and bounds as the first volcanic peaks of that inimitable island chain sprang into view, and it is strange how soon the northerner throws off the strenuous life.

This lack of hurry, to a painter of seas, is of the greatest importance, for it enables him as never before to concentrate upon the study of the waves and drink in their beauties of turquoise coloring as they come tumbling in from distant blue depths. It is often then that you watch those sudden tropical changes taking place in sky and sea. Great ragged clouds apparently nearby sweep the mountain tops glowing in golden splendor as the sun sinks out of view in the west.

Again, you are upon the western shore watching the sun drop like the petal of a rose into a glassy sea, giving place to new, sudden beauties of dusk.

Sometimes the whole dome of the sky is pure turquoise and where the yellow sunset turns it to pale emerald are rosy clouds. Sometimes you are back again on the eastern shore where the whole sea is jade and lilac and silver, with the glow of the setting sun behind the mountains lighting up the furthest line of breakers tumbling in out of the deeps beyond, and as your gaze wanders landward you catch glints of sunlight like burnished metal upon a wind blown group of palms, later to be darkly silhouetted against the evening sky, while far out upon the sea the surf still tosses its mother of pearl crests upward into the last mellow rays of the sunset and the spell of the tropics rests upon the painter of seas.

By FREDERICK J. WAUGH

TITLES OF PAINTINGS

1. *Wall of Surf*
2. *An Opening in the Jungle*
3. *Wild Coast*
4. *Atlantic Seaboard, West Indies*
5. *Topaz and Turquoise*
6. *The Blue Caribbean*
7. *Mystery of the Tropics*
8. *Storm Wave*
9. *Where the Sea is Greenest*
10. *Onrush of Mighty Waters*
11. *Big Seas on a Reef*
12. *Under the Tradewinds*
13. *Ground Swell on a Windward Coast*
14. *Sea near Lenby, Barbados*
15. *Sea at Bathsheba, Barbados*

COMING EXHIBITIONS

November 21—December 12

FIFTH ANNUAL EXHIBITION
OF
INTIMATE PAINTINGS

December 13-24

PAINTINGS OF GLACIER PARK
BY
CHARLES WARREN EATON



