

**SECOND EXHIBITION
OF
"INTIMATE PAINTINGS"**

December, 1918

**THE MACBETH GALLERY
450 Fifth Avenue, New York
At Fortieth Street**

FOREWORD

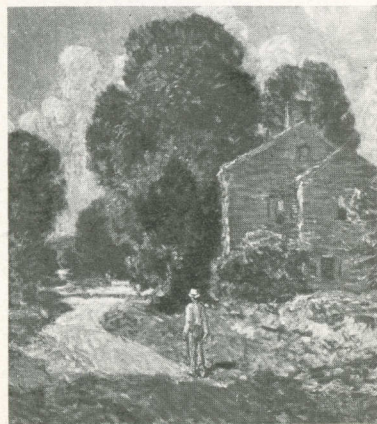
IN presenting this second collection of "Intimate Paintings", we have had in mind, as last year, the large number of people who are anxious to own fine pictures but who have been prevented through lack of the wall space usually required for the larger examples, or the means necessary to procure them.

This exhibition will be found truly representative of the work of most of our leading painters. High quality and small size have been our standards, and the result in almost every case is a fine little work of art, of genuine merit, capable of the intimate acquaintance and close-range view which in a really "big little picture" should be possible.

The sizes noted are of the canvases, unframed. The prices, which include suitable frames, are included in the catalog for the information and convenience of those at a distance who may not be able to see the exhibition itself. For them also we have excellent photographs of many of the best canvases, which may be of assistance in making a selection. Our best advice is at their service.



No. 27



No. 36

TITLES OF THE PICTURES

R. A. BLAKELOCK			
1 Landscape	5½ x 7¾		\$400
2 Encampment	8½ x 12		\$500
3 In the Forest	8 x 6		\$500
G. H. BRUESTLE			
4 Lowlands	12 x 16		\$150
5 Connecticut Landscape	8 x 10		\$60
GEDNEY BUNCE			
6 Venice	14 x 17		\$600
EMIL CARLSEN			
7 Still Life	15 x 18		\$1000
JOHN F. CARLSON			
8 Sunny Wood	12 x 16		\$250
9 Silvered Fields	12 x 16		\$250
W. M. CHASE			
10 "Cosy"	14 x 12		\$500
ELIOT CLARK			
11 October	12 x 16		\$100
BRUCE CRANE			
12 November	14 x 20		\$350
CHARLES H. DAVIS			
13 Spring in the Hills	17 x 21		\$500
14 In May	10 x 12		\$250
15 Autumn Clouds	10 x 12		\$250
16 Late Summer	13 x 16		\$175
WARREN DAVIS			
17 Early Morn	8 x 10		\$75
LOUIS P. DESSAR			
18 The Shepherd	12 x 16		\$600
T. W. DEWING			
19 Pastel	10½ x 7		\$350
20 Pastel	10½ x 7		\$350
PAUL DOUGHERTY			
21 In Casco Bay	18 x 24		\$750



No. 8



No. 63



No. 78

TITLES OF THE PICTURES

CHAS. WARREN EATON			
22 Group of Pines	24	x 20	\$500
23 Pine Grove	12	x 16	\$250
BEN FOSTER			
24 After Storm	24	x 24	\$600
25 Reflections	22	x 18	\$450
26 Maine Woods	15	x 12	\$250
F. C. FRIESEKE			
27 Morning Toilet	20	x 20	\$500
28 The Bath	16	x 14	\$300
29 The Striped Gown	15	x 12	\$300
MAURICE FROMKES			
30 Red and Green Peppers	16	x 12	\$350
31 Sweet William and Calendula	16	x 12	\$350
ALBERT L. GROLL			
32 Arizona near Hopi	16	x 20	\$400
33 Sunset in Arizona	8	x 10	\$100
CHILDE HASSAM			
34 Hawk's Nest, Old Lyme	20	x 14	\$850
35 A Head	8	x 6	\$850
36 Old House at Newfields	18	x 16	\$850
37 Beach in France	7	x 10	\$850
38 Street Musicians	11	x 8½	\$350
CHARLES W. HAWTHORNE			
39 Columbine	24	x 18	\$1000
ROBERT HENRI			
40 Segovia Girl	24	x 20	\$800
WINSLOW HOMER			
41 Sunlight on the Sea	15	x 20	
WILLIAM H. HOWE			
42 Evening, Holland	12	x 16	\$250
43 Morning, Holland	12	x 16	\$250
GEORGE INNESS			
44 Grey Day	9	x 12	
BENJAMIN KOPMAN			
45 The Amateur	11¾	x 9½	\$175

TITLES OF THE PICTURES



No. 2



No. 39

FREDERICK KOST			
46 Low Tide	19	x 15	\$275
47 Evening	19	x 15	\$275
GARI MELCHERS			
48 Early Spring in Virginia	22	x 18	\$1000
W. L. METCALF			
49 Approaching Autumn	21	x 25	\$1300
KENNETH H. MILLER			
50 Eve	16	x 12	\$300
ROBERT C. MINOR			
51 Early Fall	16	x 20	\$800
F. LUIS MORA			
52 On the Beach	16	x 12	\$500
H. DUDLEY MURPHY			
53 Across the Canal	10	x 14	\$150
54 California Hills	12	x 16	\$250
J. FRANCIS MURPHY			
55 Autumn Afternoon	11½	x 8½	
56 The Pool	14	x 19	\$3500
WALTER NETTLETON			
57 From a Shady Nook	5½	x 8¾	\$100
58 A Bit of Berkshire Winter	5	x 8	\$100
R. L. NEWMAN			
59 The Fortune Teller	10	x 14	\$375
60 Greek Shepherd	10	x 12	\$100
LEONARD OCHTMAN			
61 Silent Stream	12	x 16	\$350
IVAN OLINSKY			
62 Girl Knitting	16	x 12	\$250
E. H. POTTHAST			
63 At the Seaside	12	x 16	\$175
ALBERT P. RYDER			
64 The River	3½	x 6½	\$150
CHAUNCEY F. RYDER			
65 Topsfield, Mass.	12	x 16	\$150
66 Dale Bridge	16	x 20	\$400
67 Lower Lyndboro	16	x 20	\$400

TITLES OF THE PICTURES

HENRY W. RANGER			
68 Marine, Blue and White	12	x 16	\$150
69 Mason's Island	12	x 16	\$400
WILLIAM SARTAIN			
70 Poplar Trees	16	x 10½	\$250
71 On the Pond, Gloucester	14	x 17	\$300
72 Beach at Annisquam	13	x 18	\$300
R. M. SHURTLEFF			
73 Woods Interior	12	x 16	\$175
GRANVILLE SMITH			
74 Along Shore	10	x 14	\$350
GARDNER SYMONS			
75 The Covered Bridge	10	x 12	\$175
76 Winter, Deerfield	12	x 16	\$300
77 Last of Winter's Snow	12	x 16	\$300
78 The Valley, Winter	20	x 25	\$800
DWIGHT W. TRYON			
79 Moonlight	7	x 12	\$600
80 Autumn	12	x 22½	\$2000
J. H. TWACHTMAN			
81 Bridge, World's Fair	7	x 10½	\$275
82 Fountain, World's Fair	7	x 10½	\$175
DOUGLAS VOLK			
83 Girl's Head	10	x 8	\$250
J. ALDEN WEIR			
84 Dogs Before the Fire	14	x 20	
HENRY C. WHITE			
85 November Afternoon	12	x 18	\$250
GUY C. WIGGINS			
86 New England Landscape	16	x 20	\$250
F. BALLARD WILLIAMS			
87 The Happy Hour	10	x 12	\$400
88 Landscape	12	x 16	\$250
ALEX. H. WYANT			
89 Rain and Wind	12½	x 16	\$750
90 In the Adirondacks	9½	x 8	\$500

