

FIFTH EXHIBITION
OF
"INTIMATE PAINTINGS"

NOVEMBER 21 - DECEMBER 12
1921

THE MACBETH GALLERY
450 FIFTH AVENUE, NEW YORK
AT FORTIETH STREET

FIFTH EXHIBITION
OF
"INTIMATE PAINTINGS"

NOVEMBER 21 - DECEMBER 12
1921

THE MACBETH GALLERY
450 FIFTH AVENUE, NEW YORK
AT FORTIETH STREET

FOREWORD

A NEWSPAPER critic, in reviewing one of our previous exhibitions of "Intimate Paintings," had this to say:

"It is surprising how likable our best artists can be when off parade, so to speak. They are always unmistakably themselves, only now we seem to have taken them unawares, divested of self-consciousness."

And another:

"This is a collection of 'possible pictures'—which is to say, for example, pictures not too important or too costly for the merely human collector. They are pictures comparatively small in scale, agreeable in subject,—pictures with which it ought to be delightful to live."

These two reviews express exactly our aims in this, our fifth showing of "Intimate Paintings." The collection needs no further word of introduction.

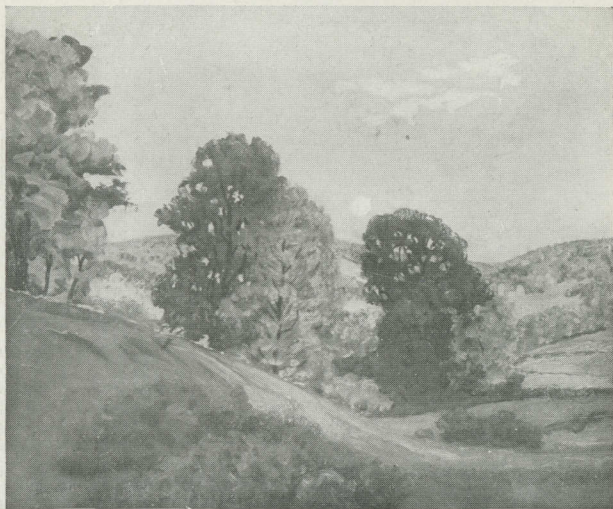


JOHN

Henri

BLAKELOCK, RALPH A.			
1 Silvery Landscape	10	x 15	\$1200*
BRUESTLE, GEORGE M.			
2 Autumn	8	x 10	100
3 Summer Morning	8	x 10	100

INTIMATE PAINTINGS

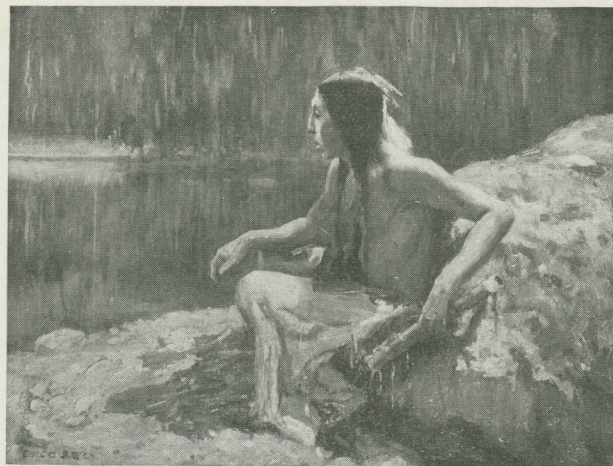


FLEETING LIGHT

Foster

BRUSH, GEORGE DEF.			
4 Child's Head	17	x 14	5000
BUNCE, GEDNEY			
5 Coming Night	8	x 13	200
CAMPBELL, BLENDON			
6 Autumn Leaves	16	x 20	350
CARLSEN, EMIL			
7 The Beach	16	x 20	600
8 Wood Interior	20	x 17	1200

MACBETH GALLERY

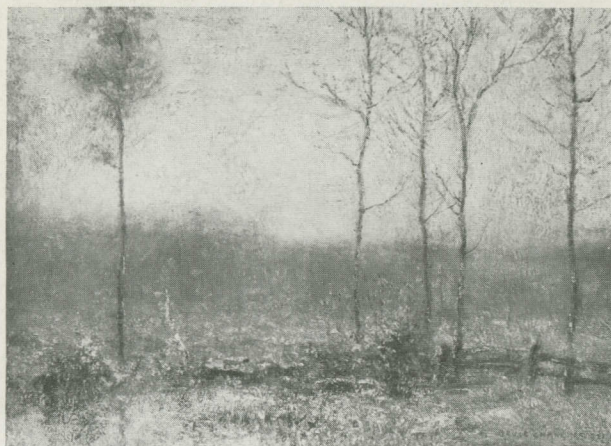


INDIAN LAKE, MOONLIGHT

Couse

CHASE, WILLIAM M.			
9 The Pink Bow	20	x 16	450*
COUSE, E. IRVING			
10 The Fireplace	12	x 16	400
11 Indian Lake, Moonlight	12	x 16	400
CRANE, BRUCE			
12 Awakening of Day	14	x 20	1200
DAINGERFIELD, ELLIOTT			
13 Coming Storm	12	x 16	600
14 The Goose Girl	12	x 16	750
DAVIES, ARTHUR B.			
15 Valley Vision	11	x 16	1200*

INTIMATE PAINTINGS



AWAKENING OF DAY •

Crane

DAVIS, CHARLES H.

16 The Hilltop	17	x	21	900
17 Gray Fields	15	x	18	650
18 In Winter Sunshine	15	x	18	650

DESSAR, LOUIS PAUL

19 Edge of the Woods	10	x	12	500*
----------------------	----	---	----	------

DEWEY, CHARLES MELVILLE

20 Evening	17	x	18	1000
------------	----	---	----	------

DEWING, T. W.

21 Head, Silver Point	11	x	8	1500
22 The Cellist, Pastel	14½	x	11	500

MACBETH GALLERY



THE RIVER ROAD

Redfield

EATON, CHARLES WARREN

23 Connecticut Woodland	20	x	24	500
24 June Morning, Lake Como	20	x	24	500
25 The Tall Pines	10	x	8	125
26 Ouetkerke, Moonlight	16	x	18	300

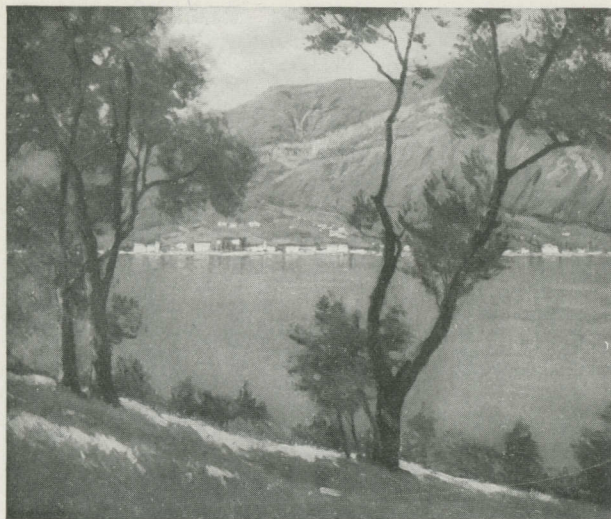
FOSTER, BEN

27 Fleeting Light	18	x	22	500
28 Hillside Pasture	12	x	15	250

FRIESEKE, F. C.

29 Reading in the Garden	11	x	14	300
30 Under the Trees	7	x	10	100

INTIMATE PAINTINGS



JUNE MORNING, LAKE COMO

Eaton

FROMKES, MAURICE			
31 California Poppies	12	x 18	350
GROLL, ALBERT L.			
32 Lava Beds, New Mexico	12	x 16	350
33 Sunrise on the Arizona Desert	14	x 19	600
HASSAM, CHILDE			
34 Gloucester at Sunset	16	x 24	2750
HENRI, ROBERT			
35 John	24	x 20	1500

MACBETH GALLERY



AUTUMN LEAVES

Campbell

HIGGINS, EUGENE			
36 Steerage	22	x 18	400
37 Open Country	14	x 20	300
HOWE, WILLIAM H.			
38 Lowlands, Holland	12	x 18	350
HOWELL, FELICIE WALDO			
39 Autumn Woodbine	20	x 16	300
40 The Flower Woman	14	x 10	175
KRONBERG, LOUIS			
41 Ballet Girl in Blue	18	x 15	1250

INTIMATE PAINTINGS



AUTUMN

Murphy

LIE, JONAS			
42 Fleet at Sunrise	12	x 16	300
MCCOMAS, FRANCIS			
43 The Wide Open, Water Color	12½	x 15	500*
MELCHERS, GARI			
44 Japanese Girl	14	x 12	1600
45 Flowers	18	x 15	750
MURPHY, H. DUDLEY			
46 Dawn	10	x 14	150
47 Cataño	12	x 16	250
MURPHY, J. FRANCIS			
48 Autumn	12	x 16	1200*

MACBETH GALLERY



A JULY DAY

Potthast

MYERS, JEROME			
49 Calico Sellers	16	x 22	150
NETTLETON, WALTER			
50 The Cloud-veil	11	x 14	300
51 A March Day	11	x 14	300
OLINSKY, IVAN G.			
52 Girl Sewing	16	x 12	350
53 The Veil	16	x 12	350
POTTHAST, EDWARD H.			
54 Manhattan Beach	12	x 16	300
55 A July Day	12	x 16	300
56 No End of Water	16	x 20	400

INTIMATE PAINTINGS



RIVER AND TREES

Ranger

RANGER, HENRY W.			
57 At Mason's Island	12	x 16	500*
58 River and Trees	12	x 16	500*
REDFIELD, EDWARD W.			
59 The River Road	20	x 24	1000
RITSCHER, WILLIAM			
60 Point Lobos, California	16	x 20	600
61 Summer Night, California	16	x 20	600
ROBINSON, THEODORE			
62 Girl in Hammock	16	x 18	250*

MACBETH GALLERY



THE GOOSE GIRL

Daininger

RYDER, CHAUNCEY F.			
63 The Blueberry Plain	16	x 20	500
64 Cricket Corner	16	x 20	500
SARTAIN, WILLIAM			
65 Poplar Trees	16	x 10½	400
SCHOFIELD, W. ELMER			
66 White Sand Bay	20	x 24	700
SHURTLEFF, R. M.			
67 Woods in Sunshine	12	x 16	350
SIMMONS, EDWARD			
68 Sunset	12	x 16	275

INTIMATE PAINTINGS



TWILIGHT GLOW

Symons

SMITH, W. GRANVILLE			
69 Summer Evening	16	x 22	650
70 The Boat Landing	12	x 16	450
SYMONS, GARDNER			
71 Twilight Glow	16	x 20	600
72 Early Snowfall	16	x 20	600
73 The Bridge	12	x 16	350
TWACHTMAN, J. H.			
74 Cincinnati Landscape	16	x 20	750*
WALKER, HORATIO			
75 Sheepfold	13	x 10	1200*

MACBETH GALLERY



OVERLOOKING THE VALLEY

Wiggins

WAUGH, FREDERICK J.			
76 On the Maine Coast	9	x 12	200
WIGGINS, GUY C.			
77 Autumn Days	20	x 24	600
78 Overlooking the Valley	20	x 24	600
WILLIAMS, F. BALLARD			
79 A Glade in Arcady	12	x 16	600
80 Across Lots	12	x 16	400
WYANT, A. H.			
81 August Day	14	x 17	3150*

*Excise Tax additional

MACBETH GALLERY
PAINTINGS

by
AMERICAN ARTISTS

among them the following :-

Betts	Groll	Murphy
Blakelock	Hassam	Olinsky
Carlsen	Hawthorne	Ranger
Carlson	Henri	Ryder
Daingerfield	Homer	Sartain
Davis	Howe	Symons
Dewing	Hunt	Tryon
Dougherty	Inness	Twachtman
Eaton	Martin	Walker
Foster	Melchers	Weir
Frieseke	Metcalf	Wiggins
Fuller	Miller	Wyant

WILLIAM MACBETH

Incorporated

450 Fifth Avenue New York City

At Fortieth Street

