

THIRTY PAINTINGS
BY
THIRTY ARTISTS

THIRTEENTH ANNUAL EXHIBITION

JANUARY 23RD-FEBRUARY 12TH

1923

THE MACBETH GALLERY
450 FIFTH AVENUE
NEW YORK CITY



GIRL WITH OUTSTRETCHED ARM

Sargent

LOUIS BETTS, N. A.

1. Phoebe

R. A. BLAKELOCK, N. A.

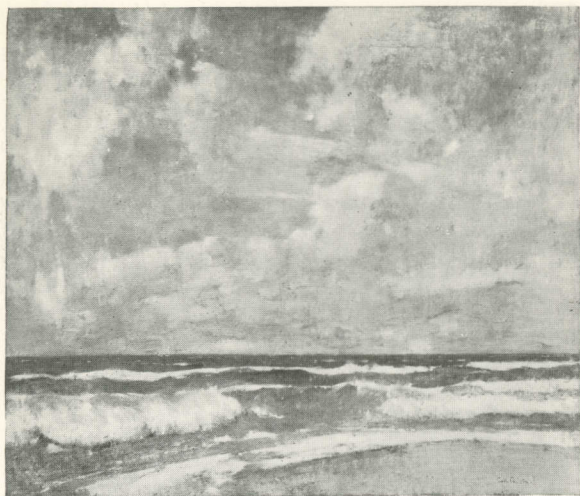
2. Moonlight and Clouds

GEORGE deFOREST BRUSH, N. A.

3. Mourning Her Brave

Lent by Victor Harris, Esq.

THIRTY BY THIRTY



OPALINE SEA

Carlsen

EMIL CARLSEN, N. A.

4. Opaline Sea

BRUCE CRANE, N. A.

5. Autumn Color

ELLIOTT DAINGERFIELD, N. A.

6. Sunlit Fields and Shadowed Stream

CHARLES H. DAVIS, N. A.

7. Midsummer in Connecticut

HENRY GOLDEN DEARTH, N. A.

8. Stormy Sea

MACBETH GALLERY



MOONLIGHT AND CLOUDS

Blakelock

THOMAS W. DEWING, N. A.

9. Girl with Outstretched Arm

BEN FOSTER, N. A.

10. Quiet Nook

F. C. FRIESEKE, N. A.

11. Girl in Brown

ALBERT L. GROLL, N. A.

12. Canyon de Chelley, Arizona

CHILDE HASSAM, N. A.

13. Listening to the Orchard Oriole

ROBERT HENRI, N. A.

14. Berna in the Persian Scarf

THIRTY BY THIRTY

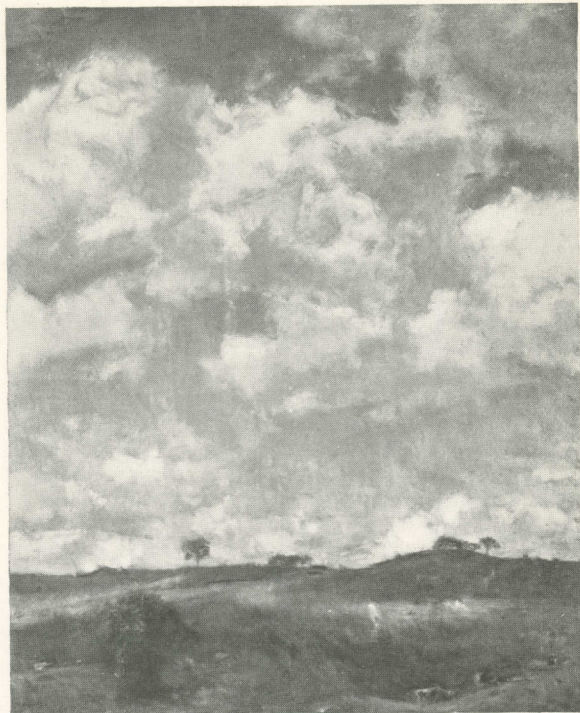


LISTENING TO THE ORCHARD ORIOLE

Hassam

- GEORGE INNESS, N. A.
15. November, Montclair, 1893
- LEON KROLL, A. N. A.
16. Springtime, Mystic, Conn.
- ERNEST LAWSON, N. A.
17. The White Woods

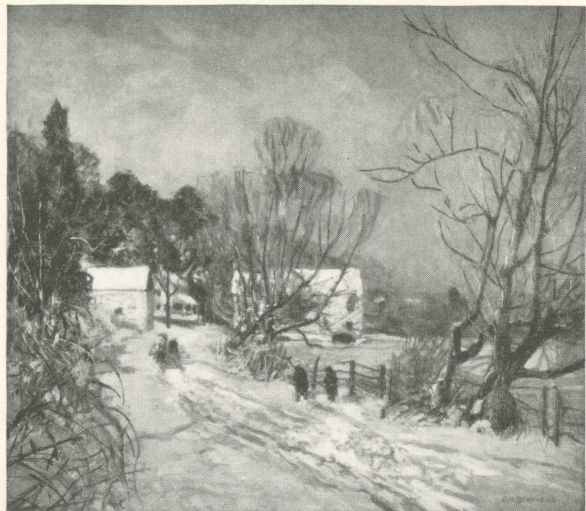
MACBETH GALLERY



MIDSUMMER IN CONNECTICUT

Davis

- GARI MELCHERS, N. A.
18. The Nurse
- J. FRANCIS MURPHY, N. A.
19. October Afternoon
- E. W. REDFIELD
20. The Road to the Mill



THE ROAD TO THE MILL

Redfield

WILLIAM RITSCHEL, N. A.

21. Moon Magic, Coast of Monterey

THEODORE ROBINSON

22. Picking Plums

JOHN S. SARGENT, N. A.

23. Portrait of Contessa Chiericati

W. ELMER SCHOFIELD, N. A.

24. The Blue Pool

GARDNER SYMONS, N. A.

25. Late Afternoon Light



DEPARTING WINTER

Wiggins

J. H. TWACHTMAN, N. A.

26. Falls in January

HORATIO WALKER, N. A.

27. Winter

J. ALDEN WEIR, N. A.

28. The Birches

GUY WIGGINS, A. N. A.

29. Departing Winter

F. BALLARD WILLIAMS, N. A.

30. The Happy Glade



A View of Two of our Four Galleries
Devoted to the Continuous Exhibition of

PAINTINGS
by
AMERICAN ARTISTS
Visitors Always Welcome

WILLIAM MACBETH, Inc.
Established 1892

450 FIFTH AVENUE : *Two doors South of Library*

