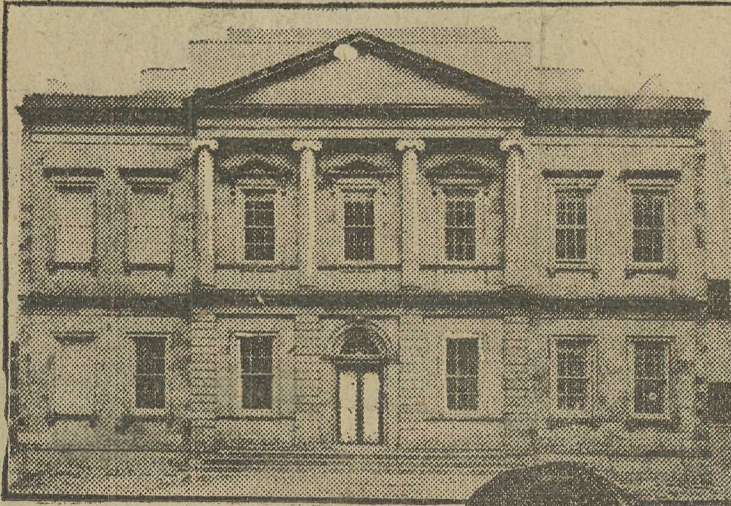


Wonderful New American Wing of Metropolitan  
Museum of Art; Historical Backgrounds  
For Priceless Early American Exhibits

242



Front of New American Wing in Central Park, New York, as Reconstructed. Stone by Stone. From the Old U. S. Assay Office.

Carefully selected exhibits of early American household furnishings and decorations placed in rooms which, in many cases, are installed with the actual old oak beams, woodwork, walls, ceilings, window casings, and doors of rare old original rooms dating from early colonial times, will be shown to the American public shortly.

They will be contained in the New American Wing of the Metropolitan Museum of Art in Central Park, New York City.

The region covered by the rooms, of which there will be eighteen, extends practically from the northern to the southern boundaries of the territory embraced by the thirteen original states.

The new American wing which will be exclusively devoted to American industrial and other art of the Colonial, Revolutionary, and Republican periods in the gift of President Robert W. de Forest of the Metropolitan Museum of Art and his wife, Emily Johnston de Forest.

The new American wing is a handsome three story structure. Its front is that of the old United States Assay Office (Branch Bank) which formerly stood at 15 Wall Street, New York, and was erected one hundred years ago. After it was dismantled the huge stones were reassembled stone by stone in the American wing.

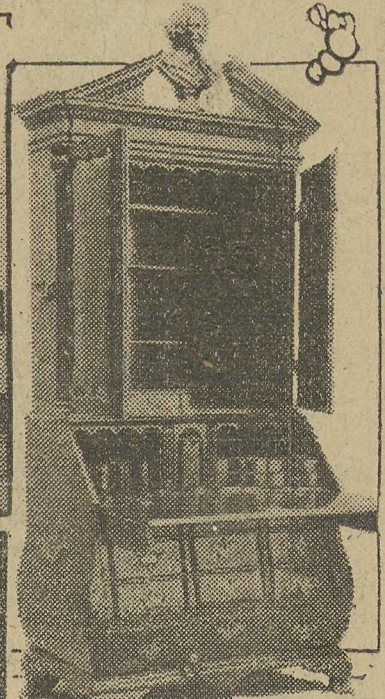
Starting on the third floor you



ROBERT W. DE FOREST

will see rooms of the early colonial type, heavy unadorned beams, low ceilings, thick walls. Those were days when two or three rooms constituted a home, often with ten or twelve children. You may see the old chair credited to Peregrine White who was born on the Mayflower. Peregrine was the youngest of the two children of Susanna White. Edward Winslow's wife died in that first terrible winter after the Mayflower's arrival and he joined hands with the widow White before Governor Bradford, and they were married.

The famous old ball room in Gadsby's Tavern at Alexandria, Va., erected in 1793 where General and Mrs. George Washington were feted on his birthday celebration, February 22nd, 1798, and where Lafayette dined has been brought into this new wing. Every inch is the identical wood used throughout



DESK USED BY GEORGE WASHINGTON WHEN IN COMMAND OF THE ARMY BESIEGING BOSTON

the construction of the historic old ball room. The windows, and musicians' gallery are placed in their exact location. In short the ball room has been placed in the museum just as though it were bodily raised and carried to New York. This is characteristic of nearly every other room and exhibit in the new wing.

Among rare and valuable collections are the famous Bolles Collection of early American furniture largely of the 17th and 18th centuries and the Palmer Collection of a little bit later date which shows the gradual evolution of interior decoration. Clearwater Collection of Silver, Charles the Second Pewter, Cromwellian Pewter, Collection of Dutch Tiles by Mrs. Frederick Aillen, and other famous relics.

The exhibits, as a whole, follow the development of the American decorative and utilitarian arts.

The American wing will teach present and future generations of Americans that the men to whose struggles they owe the foundation of the American Commonwealth were refined to their tastes and by no means indifferent to beauty.