

Lot	Item Description	Hammer Price
1	FIRKINS - Lot of three graduated blue painted covered firkins, ash splint wooden bail handles and ash bands, original old blue painted surfaces, 8 1/2"H x 9"DIA, 9 1/4"H x 10"DIA and 10 1/2"H x 11"DIA, good, shrinkage cracks in two covers. Provenance: F	\$1,100.00
2	FOOT WARMER - Turned dark wood and pierced tin in a heart and diamond pattern, initialed ' A P 1793 ' on the wood base, 6"H x 8"W x 8"D, fine original condition, good patina.	\$600.00
2.1	PANTRY BOX - Round Robin's Egg Blue painted pantry box, 9" diam, 5" T.	\$70.00
3	BATTER PITCHER - Rare blue slip decorated, three gallon gray stoneware batter pitcher, dated 1841 with large blue leaf and floral design, 15"H x 10"DIA, extensive crack running from handle across center in zig-zag fashion. Provenance: From an Estate in	\$5,100.00
4	CHOPPING BOWL - 18th C, rectangular carved maple chopping bowl with old red stain and wire hanger, 4"H x 19"W x 11"D, good, old patina.	\$175.00
5	ARM CHAIR - Late 18th C comb-back Windsor, continuous arm chair, shaped pine plank seat ending on a bamboo turned splayed leg base, 46 1/2"H x 20"W x 16"D, old refinish, old professional restoration on curved arms, inset patch on left side arm. Provenanc	\$700.00
6	SILK MAT - 2'11" X 5'2" - Oriental hand woven silk area mat with central floral medallion on black field, overall floral and scroll designs, white, gray, salmon and rust with fringed ends, excellent condition.	\$750.00
7	TOLE PAINTED BOX - early Pennsylvania canted top, double lid box with each side having three compartments, in original yellow paint with red tulips, green stems and leaves, 4 3/4"H x 9 1/4"W x 6 1/4"D, light surface wear to japanning, 95% paint condition,	\$1,250.00
8	FIRE BUCKET - Blue painted , gold stenciled leather fire bucket marked ' No 1, Prince Gardner 1832 ', 13 1/2"H x 8 1/2"DIA, replaced swing handle, minor surface abrasions near numbers, old shellac finish. Provenance: From a Damariscotta Maine estate.	\$1,100.00
9	SMALL CHEST - Eight drawer Victorian pine storage chest with a later wonderful putty paint decorated surface, on a base with wooden knobs, 20 1/2"H x 21 1/2"W x 12"D, painted by Sherry McGrath. Provenance: From a Damariscotta Maine estate.	\$400.00
10	BLANKET CHEST - 18th c, painted pine blanket chest, original red painted exterior with black and gold striping, applied molding with boot jack feet, 26"H x 43 1/2"W x 17 3/4"W, good condition.	\$1,800.00
11	AREA RUG - 4'2" x 7'10" - Hand woven antique Oriental tribal Kazak with brick red field having two medallions, geometric designs in taupe, marine blue and red, some wear to one end, rough edges, some loss.	\$1,350.00
12	COUNTRY STORE JARS - Collection of five early, green blown glass country store jars with green painted tin lids, graduating in size 12" to 16" with diameter of 7 1/2" to 9", lids have surface wear, some pitting and loss of color to lids. Provenance: Fro	\$2,000.00

13	MINI BLANKET BOX - 18th C, country Chippendale pine bracket base miniature blanket box, lid has breadboard ends with a molded edge and applied bracket base, 11"H x 19 1/2"W x 10"D, repainted with a brown and yellow swirl decoration, by Sherry McGrath. Pr	\$700.00
14	DOORSTOPS - Pair of early cast iron, period Punch and Judy figural form doorstops in multi-color original paint, Punch 12"H x 9"W x # 1/8"D, Judy 11 1/2"H x 8"W x 2 1/4"D, fine, original old surface paint and patina, minor chips and normal edge wear.	\$1,250.00
15	CHEST - Four drawer country Chippendale pine chest with four molded edge lip drawers on an applied bracket base, 36"H x 38"W x 18"D, old refinish, replaced brasses, some minor restoration to feet. Provenance: from a Damariscotta Maine estate.	\$1,100.00
16	QUILT - 84" x 99" - 19th C handmade red and white cotton quilt in 'The Drunkard's Path' pattern with scalloped edge, several small separations in white areas.	\$1,000.00
17	CHEST OF DRAWERS - 19th C diminutive two over two drawer, painted pine chest of drawers with faux marble painted top, line painted highlights on drawer fronts with black turned wooden knobs, applied bracket feet, 27 1/2"H x 30 1/2"W x 16"D, good condition	\$650.00
18	CHANDELIER - Hand wrought iron three arm nine light candle chandelier, center ball form hub suspended from shaped shaft with three square sockets, each branch has three arms with scrolled tail, a center bead on each arm with large 4 1/2" bobèche, 28"H x 3	\$350.00
19	SAMPLER - Circa 1860, hand stitched sampler by Ann Willet 9 (?), vine and floral border, ten line verse surrounded by various floral and animal icons, mounted under glass in a silver leaf, lined bird's eye maple frame, 20 1/2"H x 19"W, good, toning to cen	\$350.00
20	CHEST ON FRAME - Queen Anne chest on frame, five graduated drawers with flat molded top, dark stained maple with pine subwood and brass batwing pulls, nicely shaped apron with dropped pediment on Queen Anne legs, 66"H x 40"W x 19 1/2"D, Base custom made t	\$1,200.00
22	CANDLE STICKS - Lot of four early, metal push-up, hog-scraper candle sticks, ranging in height from 5 1/2"H to 6 3/4"H, one is signed, old surface, light pitting.	\$325.00
23	SIDE CHAIRS - Pair of 18th C Queen Anne yoke back side chairs with reverse urn shaped back splat, bulbous turned center stretcher, turned legs and feet, rush seats, 42"H x 20"W x 15"D, one chair is in old varnish, the other is in old crusty red paint (leg	\$475.00
24	QUILT - 84" x 93" - Wonderful 19th C floral quilt, white background appliqued with green stemmed flowers and red and pumpkin colored blossoms, fine stitchwork quilting throughout, signed in corner, fine new red edging, good, some blossoms have worn fabric	\$750.00
27	STAFFORDSHIRE FIGURE - 18th C double figure of ' The Vicar and Moses ', hand painted with unusual sponged brown pulpit, black and white robes and well painted facial features, 9 1/2"H x 4 1/4"W x 4 3/4"D, very good condition.	\$750.00
27.1	STAFFORDSHIRE FIGURE - Rare 19th C soft paste hand painted figure of C H Spurgeon standing at podium with right hand raised, 12"H x 5 1/2"W x 2"D, good, some paint flakes, old hairline crack in back.	\$350.00
28	OIL ON TIN - Na•ve Yacht Portrait by W. H. Coffin (NY, 1878-1941), dated 1900, signed lower right. Gold painted gesso panel frame, SS: 9" x 11", OS: 10 3/4" x 11 3/4". Good condition.	\$1,200.00
29	GLOBE - 10"DIA table top globe on cast iron base, made by 'F Field Troy NY', brass mounting ring set in paper covered wood horizon ring, mounted on three ornate cast iron legs, 14"H x 13"DIA, good, minor scuffing to paper surface around South Pole.	\$4,500.00
30	CHEST OF DRAWERS - 18th C solid cherry with pine secondary wood, Chippendale four graduated drawer chest with fluted quarter columns, molded edge top and beveled edge drawers ending on bold applied ogee bracket feet, 34"H x 37 1/2"W x 19"D, old French pol	\$3,250.00

31	CARPET - 8'8 x 11'10" - A fine Mahal carpet, West Persia, with bold polychrome palmettes and meandering floral vines, wide border of similar designs, blue field with rust, camel and ivory, excellent condition.	\$2,500.00
33	SIDE CHAIRS - Pair of country Queen Anne black painted, pad foot side chairs, yoke form crest rail and urn shaped splat, large bulbous turned stretcher, the old replaced rush seats are shellacked, 40"H x 19 3/4"W x 14"D, light color enhancement over old b	\$750.00
34	WEATHERVANE - Early 20th C sheet metal weathervane depicting Angel with long trumpet, multi piece with riveted construction and wrought iron stiffner along back, traces of detailed old painted surface, 29"H x 48 1/2"W, paint loss throughout, metal good.	\$1,200.00
35	ARCH FRAGMENT - 19th C double swan's neck entry doorway pediment, full swan's neck scroll with central turned urn on block, laminated pine with original old white painted surface, 24"H x 72"W x 11"D, good, paint flaking, no wood rot, base of urn chipped.	\$650.00
36	RUG - 8'5" x 11'6" - Heriz rug, circa 1920, minor end loss, fringe on one end. Brick red and ivory corner fields.	\$3,000.00
37	CANOE - 17• Old Town made 1923 wood canvas canoe, original varnish interior with green painted exterior, ash gunnels and thwarts, full keel with brass stem bands, original Old Town label, comes with two paddles and extra seat, SN 75229, 17•L x 34 ••W, goo	\$1,150.00
38	OOB - Still-life of wine glass with red flowers on marble top table, incised ' Anton Shroeter ' and ' Greenville, 9/74 ' and dated 1881, in a period flat panel gilt frame, SS: 12" x 8", OS: 17 1/4" x 12 3/4", fine condition. Provenance: From the Estate	\$450.00
39	JUG - Six gallon gray stoneware jug with a large blue slip floral design, embossed ' Whites Utica NY ', 13"H x 13"DIA, chips on underside of left handle, chip on inner top edge, minor glaze flaking.	\$300.00
40	DEACON'S BENCH - Circa 1830 Pennsylvania yellow ochre painted deacon's bench with back crest rail and one board shaped and carved plank seat, 34 1/2"H x 77"W x 20"D, good, old paint restoration. Provenance: From a Damariscotta Maine estate.	\$750.00
41	RUNNER - 5'6" x 12'5" - Circa 1890, oriental hall runner with double stepped hexagonal medallions with pendants on navy blue field, figural and geometric motifs, marine blue, brick red and ivory, good condition.	\$2,000.00
42	PANTRY BOXES - Lot of three early painted, covered pantry boxes, each has matching banded cover and wire bail handle, #1 - 5"H x 9 1/2"DIA, dark green, #2 - 5"H x 9 1/2"DIA, dark green, #3 - 6 1/2"H x 11"DIA, in green, good, all original, #1 has cracked l	\$750.00
43	SEA CHEST - 19th C six board sea chest with applied base trim and simple rope becketts, dovetailed construction in old green paint, interior covered ditty box removed, original iron hinges, 17 1/2"H x 45"W x 18"D, good, all original. Provenance: From a L	\$400.00
44	PANTRY BOXES - Lot of seven painted and unpainted covered pantry boxes, ranging from 9 1/4"H to 6 1/2"H, in black and green paint, natural unpainted, all have original fitted covers except for the smallest, good, original surfaces. Provenance: From a Li	\$375.00
45	SET (4) OOC'S - British Steeplechase Scenes by Samuel Henry Alken (British, 1810-1894), one signed lower left 'H. Alken', depicting jumping mishaps with cheering crowds in countryside, vintage Ackerman & Co labels verso, in water gilt molded and roped fra	\$25,000.00
48	SCULPTURE - Bronze replica of the original marble figure by Michaelangelo (1475-1564) from the Tomb of Lorenzo de Medici (executed from 1524-1531) in the Sagristia Nuova, San Lorenzo, Florence, marked on base 'Barbedienne Fondevé', 18 1/2"H x 6 1/2"W x 9	\$450.00

49	TERRESTRIAL GLOBE - ca 1870's 'Globe Terrestre par Delamarche' E. Bertaux, Editateur G. Thomas Svr. 11 Rue du Sommerand, Paris, Wood, iron & brass turned base, iron yoke, brass dial. Note indian tribes indicated on North American continent. 12" diam. Glob	\$425.00
50	CARVED EAGLE - Rare 'John H Bellamy' three dimensional carved pine eagle with hand lettered banner reading 'Merry Christmas', original gilded body and wings, red, white and blue shield and banner, black painted staff with gold tip, paper label on back wit	\$40,000.00
52	TRAY ON STAND - 19th C papier mache serving tray with custom fitted stand, wonderful shaped edge with hand painted floral and scroll pattern on black lacquered surface, tray recessed below rim of stand with wide rim on faux bamboo turned legs, 19"H x 20 1	\$650.00
53	TOOL CARRIER - 19th C blue painted pine canted edge tool carrier with shaped base, 4 1/2"H x 25 1/2"W x 3 1/2"D, good, old worn surface.	\$350.00
54	BASKET - Early Shaker octagon weave ash splint, copper riveted round woven cheese basket, 6"H x 22 1/2"DIA, minor roughness on one corner.	\$275.00
56	RUNNER - 4'7" x 9'6" - Oriental runner with four medallions on navy field, geometric designs in brick red, pumpkin and ivory, good condition.	\$500.00
57	ARCHITECTUAL ELEMENT - Dark green painted soft wood over door fan, 32 1/2"H x 65"W x 2"D, good condition, paint is restored.	\$475.00
58	WALL CUPBOARD - Early 19th C pine single raised panel door wall cupboard with a three shelf interior, in a blue wash finish of a later period, 34"H x 29"W x 12 1/2"D, good condition.	\$500.00
59	CHILD'S SLED - 19th C wooden child's sled with blue top board, probably by ' Paris Mfg Co ', 11"H x 31"W x 13"D, fine condition.	\$250.00
60	OOC - ' Apple Blossoms ' by Louis Aston Knight (Paris/New York, 1873-1948), signed lower left ' Aston Knight, Paris ', titled verso. Depicts large flowering tree alongside sparkling stream, probably in Normandy, France. Artist was the son of Daniel Ridgwa	\$13,000.00
61	CARPET - 8'9" x 11'5" - A very fine antique Serapi carpet, Northwest Persia, with gabled square medallion on rust field, stepped ivory spandrels, floral and geometric motifs in soft tones of ivory, salmon, light blue and olive green, exellent condition.	\$4,500.00
62	STONEWARE JUG - One gallon gray stoneware jug with blue slip floral design, embossed ' Charlestown ', 12"H x 7"DIA, minor production imperfections.	\$4,500.00
63	STAND - Empire period, white wood , turned leg basin stand with curved front and one drawer, custom fitted with a top shelf, 32 1/2"H x 16"W x 19"D, old honey colored refinish. Provenance: From an Estate in Camden Maine.	\$425.00
64	TREENWARE - Six piece lot of treenware in maple and pine, four plates, pedestal form soap dish and round covered box, old patina, minor shrinkage cracks.	\$650.00
65	OOC Laid on Board - Still Life with Roses by Abbott Fuller Graves (Boston, 1859-1936), signed lower left 'Abbott Graves' depicted in lush impasto spilling from a low bowl onto the tabletop. In later gold molded frame. SS: 17 1/2" x 26 1/2", OS: 22 1/2" x	\$15,000.00
67	SPICE CHEST - 19th C, five drawer pine spice chest with green and brown grain painted surface and walnut mushroom knobs, 7"H x 13"W x 6"D, painted by Sherry McGrath, 1997.	\$275.00
68	WOODEN FAN - Architectual Federal period black painted soft wood over door fan, 13 1/2"H x 38"W x 1 1/2"Thick, one chip of wood missing on one central louver, minor shrinkage cracks to left side of frame.	\$525.00
69	MIRROR - Chippendale style wall mirror, mahogany veneer over pine with string inlaid liner, 37 1/4"H x 18 1/2"W, good condition.	\$400.00

70	BANQUET TABLE - Early Victorian solid plank figured mahogany, large oval, mechanical extension banquet table on four heavy carved and turned legs with original solid bronze cup castors, porcelain wheels with two 22 1/2" skirted leaves and original crank,	\$3,250.00
71	RUNNER - 2'4" x 13'5" - Kazak Southwest Caucasus runner with eleven medallions on brick red field, geometric designs in ivory, marine blue and olive green, good condition.	\$850.00
72	DOCUMENT - The Declaration of Independence- a Peter Force copy from Notes on Lord Mahon's History of the American Declaration of Independence. (London, 1851). In a black stick frame, glazed. SS: 15 3/4" x 17 3/4"; OS: 18 3/4" x 16 3/4". Laid down, chipped	\$5,000.00
73	LIQUOR BOX - 18th C fitted liquor box, iron strapped oak box in old green paint, has blue wallpaper lined interior, fitted compartments for six large bottles and six small bottles, with drop-in tray holding two goblets, two tumblers and one funnel, hand p	\$1,100.00
74	INKWELL - Octagon shape, green painted Federal period inkwell with a black leaf design, 2 1/2"H x 4 1/4"DIA, place for four quill pens missing glass insert, lid has been re-glued.	\$175.00
75	CUPBOARD - 18th C southern yellow pine, two part stepback cupboard, the top having a stepback with a single deep, double raised panel door, interior has seven shelves with double plate grooves, top shelf with cut-outs for spoon rack, cut-out arch on base	\$1,250.00
76	AREA RUG - 4'3" x 6'6" - Hand woven Kazak, Southwest Caucasus, with square center medallion surrounded by square and oblong designs, brick red field with marine blue, camel and seafoam green, excellent condition.	\$625.00
77	STONEWARE CROCK - One gallon crock with a blue decorated bird on a branch, embossed ' F B Norton Sons, Worcester, Mass ', 8"H x 8 1/4"DIA, glaze flaking on left hand side under handle area.	\$350.00
78	SERVER - 18th C country cherry Queen Anne highboy base fitted as a server, two long narrow drawers over a narrow, center drawer flanked by deep square drawers, nicely shaped and cut-out apron, straight Queen Anne leg ending on a pad foot, 38 1/2"H x 39 1/	\$900.00
79	PITCHER - Early green glazed Southern redware batter pitcher, found in Savannah, GA, 9 1/2"H x 8"DIA, minor rim chips.	\$200.00
81	AREA RUG - 4'3" x 7'6" - Hand woven Kazak with three medallions on seafoam green field, geometric motifs in brick red, navy blue, taupe and light blue, very good condition.	\$350.00
82	GAME BOARD - Circa 1920, white and red painted pine checker board, 28"H x 18 1/2"W, some paint flaking.	\$175.00
83	CANDLE STAND - Pilgrim form, William and Mary period round top candle stand with mahogany top, the base is in an old red varnish, 26 1/2"H x 15 1/2"DIA, burn mark on one side of one foot. Provenance: From a private collection on Deer Isle Maine.	\$750.00
84	STOOL - 18th C, round pine plank top stool with a tapered leg and bamboo turned box stretcher, in old red paint, 30"H x 15 1/2"DIA, normal wear to top and bottom edges.	\$350.00
85	CUPBOARD - Early 19th C New England pine one part cupboard with applied cornice molding top and two double recessed doors, interior has three beaded edge shelves with an open well with plate groove shelf, base has two lip drawers with a single triple rec	\$2,000.00
86	RUNNER - 3'4" x 9'11" - Hand woven Oriental Sarad runner, three medallions on brick red field, geometric designs in ivory, blues and taupe, good condition.	\$700.00
87	STONEWARE CROCK - One gallon stoneware butter crock with a blue slip leaf decoration, embossed ' Gowden & Wilcox, Harrisburg, PA ', 6 1/2"h x 10"Dia, minor rim chips.	\$900.00

88	CANDLE STAND - 18th C Queen Anne solid cherry, round top candle stand with original iron tripod base support, 26"H x 15"DIA. Provenance: From a private collection on Deer Isle Maine.	\$550.00
90	CHEST ON CHEST - Circa 1790 two part mahogany Hepplewhite English chest on chest with banded inlay on top and on either side of top case, rectangular brasses with a nicely shaped apron ending on a flared French foot, 79"H x 42"W x 21"D, old refinish, repl	\$1,750.00
92	WALL CUPBOARD - 19th C black walnut, raised panel, two door counter top and/or hanging wall cupboard, pine secondary wood with original carved latch and knobs, in fabulous old red painted surface, 31 1/2"H x 25"W x 13 1/2"D, normal wear and abrasions, 1"	\$475.00
93	WALL SCONCES • Pair of replica 18th C silver plated wall sconces, heavy repousse back panels with cherubs over central center cartouche with ornate scroll and acanthus leaf work, bottom socket holds a double arm candle socket with large bobeches, 18•H x 1	\$550.00
94	MUG - Chinese export, porcelain oversized mug, cylindrical body with applied crossed rope handle, hand painted floral and vase design on open white background, 6"H x 4 3/4"DIA, good, rim flakes.	\$375.00
95	OOC - Distant View of Schulykill River by Max Weyl (DC, 1837-1914) signed II, SS: 26" x 40", cleaned, wax back stabilized, inpainting in sky on rt, through trees and lower edge.	\$4,000.00
96	AREA RUG - 6'11" x 9'10" - A fine Bakshaish rug, Northwest Persia, three hooked medallions on salmon field, geometric motifs in seafoam green, ivory and navy blue, excellent condition.	\$1,000.00
98	BLANKET CHEST - 19th C pine lift top two drawer blanket chest, applied molding to top with original iron hinges, covered interior ditty box and molded edge drawer fronts with turned wooden pulls, mounted on shaped bracket base, fabulous original red, brow	\$2,250.00
99	KOREAN CELADON WARE - 10TH C Wine Ewer, Goryo Dynasty, used by Buddhist Moks in temple rituals, 11" T, 5" D, overall fine crazing, repaired stem at top.	\$300.00
102	LONG GLASS - 19th C French made five section brass telescoping long glass, engraved near eye piece A. Woerle in Kohlyrub bie Murnav, leather wrapped exterior with original end cap, 31" extended, 9 1/2"H x 2"DIA closed, good condition.	\$125.00
103	STORAGE CHEST - 19th C brass bound camphor wood storage chest, iron bail handles with double locks, interior ditty box with simple carved cover, 17"H x 36 1/2"W x 17"D, good condition.	\$550.00
104	SEXTANT - Mahogany boxed early 20th C brass sextant, polished dial engraved Spencer, Browning and Rust London, dovetailed fitted box, 5"H x 11"W x 10"D, as found, chip to case lid.	\$275.00
104.1	DIORAMA - 19th C primitive two masted sailing ship diorama, hand carved and painted sails on blue painted back board, pine box frame with old red edge, 15 1/4"H x 18 1/2"W x 4 1/2"D, old repair to top of second mast, old original surface.	\$500.00
105	OOC - Laid on Board- Memorial Portait of General George Meade, Victor of Gettysburg, by Daniel Ridgway Knight (Paris/New York, 1839-1924). This is the original study for the monumental canvas that hangs in the Meade Room of the Union League in Philadelph	\$10,000.00
106	INK DRAWING ON VELLUM - Drawing of General George Meade and Troops departing camp at Gettysburg by Violet Oakley (Philadelphia, 1874-1961). Signed lower right and dated 1919. A study for the murals in the Pennsylvania Statehouse commemorating the Tercente	\$3,000.00
107	SCULPTURE- Original plaster Life Portrait Bust of Abraham Lincoln executed by Thomas Dow Jones (Ohio, 1811-1881), dated 1861. Jones was granted sittings by Lincoln at his home in Springfield before he departed for Washington, DC to assume the Presidency.	\$5,000.00
108	DIORAMA - 19th C folk art sailboat diorama, two masted sailing ship with wooden sails, mounted on plaster painted waves, original pine frame with glass cover, 11"H x 13 1/2"W, good, untouched condition.	\$475.00

109	STONEWARE POT - Small gray stoneware pot with blue slip decoration, 1/2 gallon amphora shape with overall floral and leaf design with incised lines, marked 'H C Smith', possibly incised 'cexa' (partially illegible), 7 1/4"H x 6 1/2"DIA, good condition.	\$1,400.00
110	OOC - 19th century view of St. Marks Square, Venice, by Lorenzo Aliani (1825-1862) signed ' Aliani ' lower right, dated 1850. Depicts main landing with the Santa Maria domes and Grand Canal in center background, Ducal Palace on right, many ships, boats,	\$15,000.00
111	AREA RUG - 6' x 8'9" - Hand woven Agra with overall design of palmettes and multiple serrated leaves on camel field with bold tones of rose, slate blue and burgundy, excellent condition.	\$1,100.00
112	FOLDING NAVIGATION RULER - Large silver mounted ivory folding chart ruler, finely scrimshawn graduations on both sides and edges, double extension slides 180 degrees, hinge on one end for overall length of 24", 12 3/4"L x 2 1/2"W x 3/8"D, good, all origin	\$2,100.00
113	ARM CHAIRS - Set of four hand made bow back Windsor arm chairs, well crafted in ash and maple with shaped pine seats, branded on bottom 'D R Dimes', nicely shaped arms with nine spindle backs, bold turned arm posts and legs, natural unpainted finish, 40 1	\$1,100.00
114	OOC - Luminous Mountainous Landscape, signed LR ' J.F. Cropsey ', possibly a view of Lake George, NY, in the original period 1870s painted plaster on wood matched corner frame, SS: 8" x 10", OS: 14" x 17", cleaned, relined, overall fine craquelere. Prove	\$10,000.00
115	CUPBOARD - 18th C pine, country Chippendale corner cupboard with heavy applied cornice molding, open top with three porringer form cut-out shelves with plate grooves, the base has two large raised panel doors with original hardware, 85"H x 53"W x 22"D, dr	\$2,000.00
116	CARPET - 8'6" x 12'4" - Oriental carpet with rows of filigree style boteh on ivory field, brick red, light and slate blue and sage green, worn areas throughout.	\$850.00
117	STONEWARE CROCK - One gallon stoneware in a blue double tulip design, made by ' Tandish & Wright ', 6"h x 9 1/4"DIA, several hairline cracks.	\$125.00
118	STORAGE CHEST - Early 19th C red painted pine dome top storage chest, 11"H x 29"W x 13"D, shrinkage cracks on top.	\$200.00
119	CANOE • 18• Old Town canoe made approx 1940, SN 119653, wood and canvas construction with out board motor mount, varnished interior with green painted exterior, ash gunnels and thwarts, full keel with brass stem bands, woven cane seats, original Old Town	\$500.00
120	BLANKET CHEST - 18th C Queen Anne pine lift top single drawer blanket chest with a later fabulous putty painted red on yellow swirled decoration and round walnut mushroom knobs, 33 1/2"H x 42"W x 16 1/2"D, fine condition. Provenance: From a Damariscotta	\$2,050.00
121	FIGURAL SILK MAT - 3'2" x 5'1" - Hand woven Oriental figural silk mat depicting hunters on horseback chasing various animals, floral designs with trees and birds, navy field and wide floral border with deer, brick red, white, salmon and olive green, fring	\$850.00
122	OOP - 'Harbor Scene, Philadelphia ' by Seymour Remenick (PA, 1923 -1999), signed lr, in a gold leaf on wood frame with linen liner, SS: 6" x 11 3/4", OS: 10" x 15 3/4", perfect untouched condition. PGGODNrovenance: From the Estate of the RT. Rev. Rober	\$1,500.00
123	OOP - ' Church in Nanyunk, PA, 1957 ' by Seymour Remenick (PA, 1923 -1999) in a carved gold leaf on wood frame, SS: 8" x 12", OS: 12 1/2" x 17", 1958 Davis Galleries, NYC label verso. Provenance: From the Estate of the RT. Rev. Robert Hunsicker, the Mi	\$1,100.00
124	OOP - ' Fog Setting In ' by Seymour Remenick (PA, 1923 -1999) signed lr, in a crved gold leaf on wood frame with linen liner, SS: 9" x 12", OS: 14" x 17", fine untouched condition. Davis Galleries NYC label verso. Provenance: From the Estate of the RT.	\$900.00

125	CORNER CUPBOARD - 18th C one piece pine, barrel back corner cupboard, top section has three shaped shelves and two raised panel doors, bottom has single matching raised panel door, remnants of old red paint, 86"H x 52"W x 23"D, good, replaced hinges. Pro	\$2,750.00
126	RUNNER - 2'9" x 12'5" - Hand woven Oriental runner, thirteen medallions in alternating navy blue and taupe designs on brick red field, geometric designs in seafoam green, pumpkin and light blue, good condition.	\$850.00
127	OOP - ' Study For Waterworks, Philadelphia ' by Seymour Remenick (PA, 1923 - 1999) in a silver leaf on wood frame, SS: 15" x 12", OS: 18" x 15", fine untouched condition, Peridot Gallery NYC label verso. Provenance: From the Estate of the RT. Rev. Rober	\$1,000.00
128	OOP - Anthropomorphic Fantasy Portrait ca 1850, American Na•ve depiction of stork holding palette and easel, unframed, on thin pine panel, SS: 11 1/2" x 22 1/2", very good condition, single hanging hole top center.	\$1,300.00
129	PAIR PORCELAIN CAT PILLOWS - Chinese Export Rose Canton recumbent cats, signed, 7" H, 13" L, 5" W. Fine condition. Provenance: From the Estate of the RT. Rev. Robert Hunsicker, the Minister of Trinity Church, New York City.	\$900.00
130	COUNTRY STORE CABINET - 19th C, soft wood, yellow ochre painted, hardware store cabinet from Cornish ME, fifty small drawers (6" x 6") on left side and sixty larger drawers (6" x 10") on right side, original brass handles, 5'11"H x 7'9 3/4"W x 12"D, surfa	\$1,500.00
131	CARPET - 9'8" x 13'4" - Fine hand woven oriental room size carpet, center lobed oval floral medallion on red field, overall designs of floral and geometric motifs, ivory, salmon, olive green and turquoise, excellent condition.	\$2,000.00
132	SIDE CHAIRS - Circa 1840, set of six country side chairs with shaped and molded plank seats and turned legs, in blue and aqua paint, 33"H x 15"W x 14"D, old wear to surface, overall surface crazing. Provenance: From a fine Somesville Maine home.	\$800.00
133	OOP - Oval 'A Horse-Eye View of Edinburgh Castle' by G. J. Ogilvey, 1867, inscribed on back, in the original gold leaf bullseye frame, SS: 3 3/4" x 5 1/2", OS: 9" x 11". Fine untouched condition. Provenance: From the Estate of the RT. Rev. Robert Hunsic	\$550.00
134	TEA TABLE - Queen Anne period, tiger maple tea table, wonderful shaped top with exaggerated cookie corners, shaped apron mounted on turned, tapered legs mounted on thin pad feet, 27"H x 36 1/2"W x 22 1/"D, old refinish, sander marks, top replaced. Proven	\$1,050.00
135	OOC - Still Life with fruit, grape leaves, wine bottle and tambourine, by Julie Von Der Lage (German, 1841 - ?), dated 1871, signed lower left, "V.D. Lage", Berlin label verso. In a fabulous heavy gilt deep gesso frame, SS: 22" x 32", OS: 33" x 43", very	\$3,250.00
136	AREA RUG - 3'3" x 4'8" - 20th C Kazak rug, star medallion in red & camel, geometric designs set on a rich navy field, soft lustrous wool, excellent condition.	\$450.00
137	NATIVE AMERICAN SCULPTURE - Vera Cruz Buff Terra Cotta Head, Pre-Columbian Remojadas, ca 600-900 AD. 4 1/2" x 4 1/2" on 6 1/2" base. Very good condition, a fragment of a larger figure.	\$500.00
137.1	SOUTH AMERICAN POTTERY - 11th c Early Churotega (Costa Rica), a red and white painted terra cotta effigy animal-form pot, 4 1/2" x 5" x 3". Minor paint loss.	\$275.00
137.3	SOUTH AMERICAN POTTERY - Southern Culture 'del sur' (Costa Rica) 900-1200 AD pot, red and black painted with raised medallions, 3 1/2" x 3 1/2". Minor paint losses.	\$250.00
137.4	SOUTH AMERICAN POTTERY - Huetar (Guetar) Guapiles Dist. N.E. (Costa Rica) 100 BC - 1000 AD pot with red and black painted accents, 4 1/2" H x 5" DI. Minor losses to paint.	\$200.00

138	OOCB - 'In The Studio' by Dominic Spadaro (DC, 1931 -), signed lower left, Gallery Marc, Washington, DC label verso, dated 1970, depicting woman seated reading, in painted and gilded carved wood frame, SS: 9 1/2" x 11 3/4", OS: 15 1/2" x 18 1/2", fine co	\$300.00
139	BLANKET - 48" x 78" - Fine woven Native American Germantown blanket, early 20th C, red field with traditional geometric patterns in white, navy, green, maroon, light blue and brown, good, slight surface moth damage, no holes.	\$2,800.00
140	CUPBOARD - Two piece stepback 19th C walnut cupboard, top section has wide flat molded applied trim over two, three pane glass doors, two fixed interior shelves, base has two recessed panel doors with single wide shelf, boot-jack sides with shaped front a	\$3,000.00
141	OOB - Summer Trees by Lake by Max Weyl (DC, 1837-1914), signed lower right, in an embossed Art Nouveau pattern plaster on wood painted frame, SS: 16" x 20", OS: 24" x 27 1/2", fine untouched condition, minor frame chips. Provenance: From the Estate of t	\$2,600.00
142	OOB - Summer Marsh Scene by Max Weyl (DC, 1837-1914), SS: 12" x 16", fine untouched condition. Provenance: From the Estate of the RT. Rev. Robert Hunsicker, the Minister of Trinity Church, New York City.	\$2,900.00
143	MINIATURE CHEST - Circa 1800, mahogany and cherry, bracket base chest with four small drawers over a locking, long narrow drawer, turned wooden knobs with mother-of-pearl inlay, sawtooth trace inlay on drawer fronts, 10 1/4"H x 14 1/4"W x 5 1/4"D, old ref	\$500.00
144	BRASS SHIP'S BELL - Circa 1860-1880, ship's bell with rosewood handle, 14"H x 6 1/4"DIA, fine, original condition. Provenance: From an Estate in Camden Maine.	\$325.00
145	CHEST - 18th C Queen Anne red painted pine four drawer simulated five drawer chest, 46 1/2"H x 36"W x 18"D, old replaced oval brasses, minor paint enhancement. Provenance: From a Damariscotta Maine estate.	\$1,700.00
146	OOP - 18th c Russian Icon ' Nativity of Our Lord ' with original 1939 World's Fair exhibition label verso, SS: 14" x 12" x 3/4", painting is fine, but panel has cupped.	\$1,500.00
147	PAINTED RUSSIAN ICON - Oil on Wood Panel Portrait of Christ Holding a Religious Text having a finely engraved silver fascia, 1829-33 Assayers mark, fineness 84, Moscow, set into a fitted velvet lined wooden case with integral easel, 10 1/2" x 8 3/4", very	\$2,000.00
148	OOP - 16th c Russian Icon, Novgorod School. Unframed, 13 3/4" x 11 1/2". Warped, filled center crack with inpainting, hole drilled top center left.	\$800.00
148.1	OOP - Early Byzantine Greek Religious Icon of two Saints, probably 16th c. On 7 1/2" x 11" x 1" pine slab. Unframed. Losses to edges and to highlights of grain.	\$175.00
148.2	(2) BOUND COPTIC MANUSCRIPTS - Ink on sheepskin with wooden covers, bound with gut and twine, the larger of the two is in a crocodile skin shoulderbag with integral cover that slides up the straps. Probably religious texts of Egyptian origin, these could	\$900.00
148.3	CAST BRASS RUSSIAN ICON - Four-Panel Hinged Religious Icon in cast brass with pale blue enamelwork scattered throughout, decorated front with Orthodox Cross, early 19th c., has peaked top, five scenes per panel from the Life of Christ, roughly 4" x 7" ea	\$500.00
149	RUSSIAN CHALICE VEIL - Imperial quality multi-colored embroidered altar veil in handcut silk velvet with metal thread, probably from the Winter Palace at Tsarkoselo, from the Hammer Collection, provenance on back, in black and gold frame, glazed, SS: 19"	\$1,200.00
150	OOB - ' In Usabebl, Summer ', by Sergei Arsenievich Vinogradov (Russian, 1869-1938), signed lower left with inscription in Cyrillic, dated 1915, no 8, depicting a sunlit room with a young girl in a white dress standing on the veranda with her back to the	\$270,000.00

151	W/C ON VELLUM - 18th c Portrait of St George Slaying the Dragon, probably Greek, in a plexiglas box frame, image is 11" x 8", OS: 14" x 11 1/2", toning and staining. Provenance: From the Estate of the RT. Rev. Robert Hunsicker, the Minister of Trinity	\$500.00
152	CANDLE STAND - 18th C Queen Anne maple round top candle stand with heavy turned tiger maple pedestal, 27 1/2"H x 16 1/2"DIA, one foot re-attached, minor old repair on top and base. Provenance: From a private collection on Deer Isle Maine.	\$350.00
153	JAPANESE LACQUERED PAPER MACHE TRAY - 19th c Rectangular Tray with rounded corners, depicting multiple figures in village scene, in gold on black, 24" x 18 1/2", 1 1/4" deep, one minor chip. Provenance: From the Estate of the RT. Rev. Robert Hunsicker,	\$200.00
154	CHOPPING BOWLS - Lot of three 19th C nested chopping bowls, one piece turned in natural unpainted wood, 14•, 16• and 20•DIA, good, no cracks, good wear.	\$450.00
155	OIL ON CRADLED PANEL - 17th c Dutch Landscape depicting wagon pulling up alongside ramshackle inn, thatched cottge, village in distance, in the manner of DeKoninck. In later handcarved gilt Italian frame with linen liner, SS: 18" x 32", OS: 27" x 41", re	\$5,000.00
157	STORAGE BOX - 18th C, green painted, dovetailed pine storage box with dome top and yellow striping on top, 9 1/2"H x 23 1/2"W x 11 1/2"D, surface to top edges.	\$275.00
158	TOLE TRINKET BOXES - Collection of three small dome top, tole painted boxes with floral designs, two are 4"H x 6 3/4"W x 3"D, one is 1 3/4"H x 3"W x 2"d, two show some wear, one is very good condition.	\$800.00
159	OOC - Miniature Luminous Landscape with cows watering and distant mounatins in Fall, signed Lilla E. Hall on the stretcher, in the original period deep ribbed cove matched corner gilded wood frame, SS: 3 1/4" x 6", OS: 9 1/4" x 12", fine untouched conditi	\$2,900.00
160	CUPBOARD - 19th C country pine stepback cupboard, top section has two seven pane doors with two shelf interior and old wallpaper lining, base has two drawers with two raised panel wooden doors, 19th C country pine stepback cupboard, 80 1/2"H x 52 1/2"W x	\$1,100.00
161	OOC, Laid on Board - 'The Last Load' by Mathias Joseph Alten (MI, 1871-1938), signed lower right and dated 1919, inscribed verso. Depicts a farmer standing atop a fully loaded haywagon being pulled by two horses. In matched corner gilt Arts & Crafts gesso	\$3,500.00
162	OOC, Laid on Board - 'Spring Time' by Mathias Joseph Alten (MI, 1871-1938), signed lower right and dated 1919, inscribed verso. Depicts man plowing under flowering tree. In vintage matched corner Arts & Crafts gilt frame, SS: 14" x 10 1/2", OS: 21" x 17 1	\$3,750.00
163	OOC - Dusk Landscape by Mathias Joseph Alten (MI, 1871-1938), signed lower right and dated 1909, depicting a cabin nestled in trees under a glowering sky. In vintage matched corner Arts & Crafts gilt frame, SS: 11 1/2" x 16", OS: 15 3/4" x 20 1/4". Scratc	\$1,750.00
164	OOC - 'The Approaching Storm' by Mathias Joseph Alten (MI, 1871-1938), signed lower right and dated 1917, inscribed verso. Depicts figure seeking shelter under a tree from darkening sky. In matched corner Arts & Crafts gilt gesso frame, SS: 11 1/2" x 16 1	\$4,500.00
165	CHEST - 18th C solid cherry country Chippendale six drawer chest having six cock beaded edge graduated drawers with exposed dovetailed top and applied cornice molding, 54"H x 37"W x 18"D, old refinish, replaced brasses, feet are a later restoration. Prov	\$1,300.00
166	AREA RUG - 3'2" x 5'2" - Kazak style area rug in red, blue and ivory, fine condition.	\$300.00
167	OOC - ' Thicket ' by Richard Mayhew (CA, 1934 -) depicting dark trees at dawn, Robert Isaacson NYC label verso, SS: 18" x 24", good untouched condition. Provenance: From the Estate of the RT. Rev. Robert Hunsicker, the Minister of Trinity Church, New Y	\$3,100.00

168	CANDLE STAND - 18th C solid cherry Queen Anne round top candle stand with original forged iron tripod support, 26 1/2"H x 16 1/4"DIA, top has black staining, old refinish. Provenance: From a private collection on Deer Isle Maine.	\$375.00
169	OOCB - Summer Landscape with Village Scene by Cornelia Cowles Vetter (CT, 1881- 1959), signed lower right ' C. Vetter ', in gold painted wood frame, SS: 8" x 10", OS: 10 1/2" x 12 1/2", fine untouched condition. Provenance: From the Estate of the RT. R	\$225.00
170	BLANKET CHEST - 18th C pine lift top blanket chest with four drawer base, nicely molded top with original snipe hinges, brass batwing pulls and escutcheons, two over two drawer configuration, molded drawer edges and applied molding to shaped base, 48 1/2"	\$700.00
171	PRAYER MAT - 4'6" x 2'8" - Geometric designs in brick red, black, taupe and brown, minor repairs, rough edges, some wear.	\$425.00
172	OOC - Winter Landscape by Lorenzo James Hatch (NY, 1857-1914) signed lower right and dated 1907, an Impressionist study of light on sloping snowfields under cloudy skies, in a gold ribbed molded frame, SS: 23 1/2" x 29 1/2", OS: 29" x 35", overall heavy c	\$800.00
173	LAMP TABLE - Chinese export marble top lamp table, reticulated hand carved apron and legs in a bamboo motif, cross stretcher base on claw feet, 24"H x 14"DIA, good condition.	\$200.00
174	SHELF BRACKETS - Pair of large cast iron shelf brackets, open scroll work with spread wing eagle, two sided detail in old black painted surface, 16 1/2"H x 12"W x 1 1/4"D, good condition.	\$325.00
175	OOP - Oval Portrait of Country Girl in Straw Hat, attributed to Lilly M. Spencer (NY, 1822-1902), she is depicted leaning on a table, her chin in hand, peacock feather in hat, shopping basket on table with chicken and eggs, in vintage oblong black walnut	\$4,000.00
176	NEEDLEPOINT SAMPLER - Alphabet, numbers and 'The First Promise' by Ellen McLaughlin, age 11 years 10 mos, Dec 13th, 1851, 99th Regt School, in black molded frame, glazed, SS: 13 3/4" x 13 1/2", OS: 19 3/4" x 16 1/2", very good condition, frame damaged.	\$200.00
177	CORNER CUPBOARD - Circa 1890 small pine corner cupboard with single raised panel door in green and persimmon color grain paint with a blue interior, grain painting done by Sherry McGrath, replaced hardware.	\$325.00
178	TRADE SIGN - Circa 1900, black and white painted trade sign ' Wonder-Brook Farm milk and cream from government tested herd. Pure sweet and clean, Barry Did It', 21"H x 41"W x 2"D, frame edge heavily worn, losses to dark sanded background.	\$225.00
179	STORAGE BOX - 19th C paint decorated pine box, red and green painted lid with initials SJB, mustard yellow sides with red tree decorations, interior has remnants of old wallpaper lining, 7"H x 16"W x 8 1/4"D, good, all original.	\$200.00
181	CHINESE RUG - 5' x 8'2" - Chinese rug with round center floral medallion surrounded by floral sprays, bats and butterflies and six smaller round medallions on navy field, salmon, taupe and cream, good condition.	\$900.00
182	OOC - Village Street Scene by Evaristo Cappelli (Milan, 1868-1951), depicting a colorful Impressionistic view of the street seen from a second floor balcony, signed lower right, in gilt dentil carved panel frame, SS: 40 1/2" x 27 3/4", OS: 46" x 34 1/4",	\$3,000.00
183	SILVERWARE CARRIER - 19th C walnut two compartment, lift top silverware carrier, three finger hole shaped handle with matching ends, fine dovetailed corners on chamfered base, 9"H x 13"W x 9 1/2"D, good, old repair to one end.	\$395.00
184	FIRKIN - Large blue painted wooden firkin with cover, ash bail handle with ash bands, 14"H x 15 1/2"DIA, good, original painted surface.	\$525.00

185	CHEST OF DRAWERS - Transitional Federal period, solid pine five drawer chest with gallery and molded edge top, recessed panel sides, mortise and pegged corner posts ending on a shaped cut-out stylized Hepplewhite foot, large clear glass knobs, 52"H x 47"W	\$600.00
186	MORTAR AND PESTLES - Two 18th C mortar and pestles sets, #1 - 7 1/2"H x 5 1/2"DIA, turned on footed base, good, old patina, #2 - 6"H x 5"DIA, simple turned, rough exterior.	\$225.00
187	W/C - Florida Wetlands by James Ralph Wilcox (Fla, 1866-1915), signed lower right. Depicts shack on spit of land to right, palm trees to left. In vintage Arts & Crafts deep molded gold painted frame, SS: 10 1/2" x 14 1/2", OS: 18" x 22". Very good conditi	\$3,200.00
188	STACK TABLES - Set of four nested 19th C black lacquered Chinese stack tables, shaped tops with hand painted gold traditional village scenes, open fretwork sides, 27 1/2"H x 20 1/2"W x 13 1/2"D, good, minor chipping of lacquered surface.	\$400.00
189	BRAIDED RUG - 2'8" x 4'4" - Braided Rug with circles and diamonds in an alternating pattern, gray, pumpkin, salmon, green and blues, good condition.	\$800.00
190	CHIMNEY CUPBOARD - 19th C tall stepback, one piece chimney cupboard, single top door with six glass panes and white painted interior, single recessed panel lower door, brown grain painted, 95 1/2"H x 27"W x 15"D, good, missing porcelain knobs on lower doo	\$900.00
191	SHAVING MIRROR - Mahogany Hepplewhite, bow front, three drawer shaving mirror, shaped crest with brass finials, white painted pulls and mounted on French style feet, 27"H x 20 1/2"W x 8"D, veneer chip in front.	\$225.00
192	OOC - ' Plumb Beach, Brooklyn, NY ' by A. Jaccarino, signed lower right and mearked verso 'Background is Jamaica Bay and Fort Tildon, Rockaway' in carved and gilded plaster on wood frame, SS: 12" x 16", OS: 16 1/2" x 20 1/2", fine untouched condition. Pr	\$600.00
193	STONEWARE CROCK - Two gallon gray stoneware crock with a blue floral decoration by ' E E Hall & Co, 171 Blackstone St, Boston ', 11 1/2"H x 9"DIA, hairline crack on the left side front base, several rim chips.	\$120.00
194	18th c PAINTED WOOLWORK ON SILK - Bucolic Shepherding Family Group in a gold and black oval spandrel mat, in a gold leaf on plaster embossed period matched corner frame, SS: 12 1/2" x 16", OS: 20 1/2" x 24", major losses to painted left hand top sky, fram	\$1,100.00
195	CHEST OF DRAWERS - Four drawer Hepplewhite period chest of drawers, mahogany with pine secondary wood, veneered edge top with cock beaded drawer fronts, checked inlay above shaped apron, mounted on spalyed French feet, old replaced brass pulls, 36 1/2"H x	\$900.00
196	STONEWARE CROCK - Three gallon gray stoneware crock with incised and gray/blue slip decorated heart, 13"H x 10"DIA, minor blemishes.	\$500.00
197	OOC - 18th c Oval French Allegorical Scene with lady lighting candle using a magnifying glass, a man carrying a gardening spade, a woman with a watering can, child with a stick having an 'x' at the end, in Victorian gilt gesso panel frame, SS: 12 1/4" x 1	\$500.00
198	BENCH - Early 19th C country pine bench with half moon cut-outs on the legs, mortise and tenon construction, inlet cleat supports on the back with inlet apron, in dump cart blue paint, 17 1/2"H x 88"W x 11 1/2"D, shrinkage cracks on top board.	\$350.00
199	BOX - Late 18th C red stained pine pumice box, 6"H x 12"W x 6 3/4"D, old worn surface.	\$200.00
200	CHARCOAL DRAWING - 'Joseph Long Elk', Profile Portrait of Indian Chief, attributed to N.C. Wyeth (1882-1945), marked verso 'Sat Sketch' in pencil, with a copy of a letter from Betsey Wyeth discussing Pyle's Saturday night drawing classes, on laid paper w	\$6,000.00

202	LOOM STOOLS - Pair of 18th C loom stools, shaped plank seat with three primitive mortised turned splayed legs, 21"H x 15 1/2"W x 5 1/2"D, old surface. Provenance: From a private collection on Deer Isle Maine.	\$400.00
203	PICNIC BASKET - Early 20th C, northeast Native American made buttocks form covered picnic basket, fixed sapling handle, fine woven ash splint with red stained highlights, 18"H x 24"W x 17"D, good, all original, minor breaks.	\$275.00
204	NEEDLEPOINT SAMPLER - Alphabet, numbers and inspirational quote by Mary J. Wilson, Ae 13, 1841, on coarse linen, in a ribbed oak frame with walnut finish, SS: 8" x 11", OS: 12" x 11", toned, stained at bottom.	\$150.00
205	OOP - Study for a Tavern Scene by George Cruikshank (British, 1792-1878), signed lower right, depicting men carousing around an open grate fire, a woman pours beer from a pitcher, a cat rubs against a table, a man props his feet up in front of his tall ri	\$1,000.00
206	AREA RUG - 24" x 29" - 20th C figural hooked area rug, brown background with figure of a champion dalmation positioned over globe, inset profile of US with 'RVN, W/WL 4/78', 2" picture frame border, good, stain on dog's body.	\$150.00
207	MARTIN HOUSE - Mid 20th C three tier martin house, galvanized sheet metal roof with two level wrap around porch, unpainted pine with natural weathered surface, 18 3/4"H x 23"W x 30 1/4"D, good condition	\$250.00
209	FIREPLACE FENDER - Late 19th C brass fireplace fender, pierced sheet brass with wrapped ends, mounted on three cast brass feet, 8"H x 41"w x 12"D, good condition. Provenance: From an Estate in Camden Maine.	\$150.00
211	Rug - 10'4" x 8'2" - Hand woven Kerman rug with blue background and ivory field, fine condition.	\$1,000.00
212	SIDE CHAIR - 18th C, Pennsylvania mahogany ribbon back, Chippendale side chair with molded front legs, descended through the family of General George Meads, 38 3/4"H x 21"W x 17"D, good, old refinish, recovered slip seat. Provenance: Direct descent from	\$500.00
213	OOC - 19th c Summer Landscape with River, unsigned, in fancy Victorian gilt reticulated high relief frame, SS: 21" x 27 1/2", OS: 32 1/2" x 39", very good condition, two small repaired punctures, frame repairs.	\$950.00
214	SNUFF BOX • 19th C Scottish mountain goat horn snuff box with an unmarked silver hinged dome top set with a large faceted citrine stone, engraved • J Ritchie •, 3 1/2•H x 2 3/4•W x 1 1/2•D, good, all original.	\$650.00
215	CHEST OF DRAWERS - Four drawer period Hepplewhite chest of drawers, mahogany with oversized top drawer over three graduated lower drawers, oval brass drawer pulls and pine secondary wood, mounted on straight Hepplewhite legs, 43"H x 46"W x 21 1/4"D, good,	\$650.00
216	PRAYER MAT - 2'11" x 4'11" - Oriental prayer mat with brick red field and pumpkin center design, dark brown, gray and ivory, good condition.	\$100.00
217	OOC - Eden Park Bridge, Cincinnati by David Rosenthal (Ohio, 1876-1949), unsigned but with estate stamp on back. In grey painted board frame with grey liner, SS: 15 1/2" x 19 1/2", OS: 22 1/2" x 26 1/2". Relined.	\$300.00
218	CROCK - Six gallon straight side crock with blue bird decoration and applied handles, incised top band, 13"H x 14"DIA, hairline crack, some surface pitting.	\$200.00
221	OOCB - Portrait of a Young Woman in a Bonnet, unsigned ca 1920, Impressionist style, viewed in profile against a green background. Inscribed verso 'H.A. Loeb, Cedar Road, Elkus Park, PA', on New York City artists board, in a vintage mathced corner Arts &	\$625.00

222	REDWARE JUG - 18th C, ovoid unglazed redware jug, with a molded lip and a raised molded base, 12"H x 8"DIA, minor chips on lip, wear with traces of old red decoration.	\$150.00
223	CANDLE STAND - 18th C Queen Anne square top, solid cherry candle stand with original forged iron tripod support, 26 1/2"H x 14"W x 13 1/2"D, old refinish, traces of black stain, one leg has old repair. Provenance: From a private collection on Deer Isle M	\$225.00
226	HOOKEED RUG - 2'3" x 4'2" - Hooked area rug depicting three masted sailing ship on blue field with clouds and birds, black hull and ivory sails, 6: section of bottom missing.	\$300.00
227	W/C - Working Waterfront impressionist study ca 1920, unsigned, in a gold and green molded frame, SS: 9 1/4" x 13", OS: 14 1/4" x 18", very good condition.	\$100.00
228	CANTERBURY - Circa 1840-50, mahogany canterbury with turned acorn finial, corner posts with four section divided top over one drawer base, drawer has cock beaded drawer edge and single brass knob pull, ring turned and twist carved legs terminating on bras	\$600.00
229	NEEDLEPOINT SAMPLER - Alphabet, numbers and a mourning poem for Father, ivy border and rose branch, house at base, wrought by Clara Jane Dow, aged 9 yrs, Lowell Mass, 1838, in a later molded maple frame, glazed, SS: 23 1/2" square, OS: 25 1/2" square, mi	\$500.00
230	TEA TABLE - 18th C solid figured mahogany, round Queen Anne tilt-top tea table on a nicely turned, urn shaped pedestal ending on three carved cabriole legs with pad feet, original forged iron tripod support and brass latch, 27"H x 29 3/4"DIA, fine, origin	\$900.00
232	OOC - 18th c Italian Genre Scene of Monk handing a loaf of bread to a poor young woman with a boy at her knee and a baby at her breast, seated in front of Classical ruins, in original 18th c Italian deeply carved gilt frame, SS: 22" X 18 1/2", OS: 35" X 3	\$4,000.00
234	REVERSE OIL PAINTING ON GLASS - 17th or 18th c Persian portrait of a seated diety, in original carved and painted frame, SS: 9 3/4" x 7 1/2", OS: 12" x 9 1/2", minor paint losses, frame is overpainted. Provenance: From the Estate of the RT. Rev. Robert	\$1,000.00
235	CUPBOARD - unusual 19th C custom made stepback kitchen work cupboard, hinged top storage access door over drop front work surface with breadboard ends, interior has series of small spice drawers, base has central door flanked by two rows of three drawers,	\$1,100.00
236	(2) EGYPTIAN CANOPIC DUMMY JARS - 25th Dynasty sculpted Limestone Jar Dummies, ca 650 BC, depicting the Baboon-headed Hapi, representing North, guarded by Goddess Nephthys; Pharaoh-headed Imseti, representing South, guarded by Goddess Isis. By this time,	\$1,400.00
237	BENCH AND STOOLS - Lot of three country pine bench and stools, #1 - foot stool, 6"H x 12"W x 6"D, #2 - foot stool, 8 1/2"H x 17 1/2"W x 8"D, #3 - bench, 16"H x 54"W x 13 1/2"D, mortise and nailed construction, good, natural, unpainted. Provenance: From	\$350.00
238	OOCB - Indian Women by a Barn by Constance Bell, signed lower left, in walnut molded frame with gilt liner, SS: 7 1/2" x 10 1/4", OS: 15" x 12 1/4", good condition, slightly grimy.	\$325.00
239	STONEWARE CROCK - Two gallon gray stoneware crock with a large blue slip floral decoration, 11"H x 8"DIA, minor rim chips.	\$100.00
240	PIE SAFE - 19th C Southern applewood, pierced tin pie safe with punched circular diamond pattern, two doors with three panels and a single narrow drawer at the base with three tin panels on each end, it has wooden knobs and latches, 54 1/2"H x 42"W x 16"D	\$750.00
241	RARE ENGRAVED MAP, HANDCOLORED - 'A Newe Map of Poland, done into English by I. Speede' (John Speede), London, 1676. Includes birdseye views of Cracow, Dantzich, Posna, Crossen, Sandomiria, Breslaw & indigineous costumes of Polnian and Silesian gentleme	\$900.00

243	ENGRAVED MAP, HANDCOLORED - Transylvania by Abraham Ortelius, titled 'Transylvania hanc ultra vel Transylvarium, Quae et Panodacia, et Dacia Alipensis, Vulgo Sibemurge Olcitur, Edidst Vienne a. 1506, Nobilia Atque Doctib, ines Sansutus Panninilis', this p	\$300.00
244	EXPORT MUG - Early Chinese export pottery mug, straight sided with applied strap handle, blue decoration in traditional scenes, 6"H x 4"DIA, good condition.	\$225.00
245	SETTEE - Pennsylvania plank seat, triple back settee in poplar, pine and beech, circa 1840, checkered upholstered cushion, 35"H x 70"W x 24"D, old refinish, repairs to both arms near back support, half of short spindle missing under right arm. Provenanc	\$300.00
246	BATON - 19th C whale bone baton, tapered, faceted shaft with simple shaped handle, 25"L x 1/2"DIA, good condition.	\$200.00
247	SEA CHEST - Early 19th C pine, dovetailed sea chest in an old green stain, 15 1/2"H x 38"W x 16"D, good, original old condition.	\$200.00
248	BASKETS - Pair of late 19th C unusual Nantucket form woven willow baskets, with pine bases, shaped sides tapered to a large opening with cross banded rim with copper rivets, natural surface with good patina, 6 1/2"H x 6 1/4"DIA, minor breaks.	\$125.00
249	CANDLE STAND - 18th C solid cherry, square top candle stand with original forged iron tripod base support, 25 1/2"H x 13 1/2"W x 12 1/2"D, old refinish, shrinkage crack repair in top. Provenance: From a private collection on Deer Isle Maine.	\$200.00
250	SOFA - Upholstered, country style sofa with a square leg base, the legs are in an old dumpcart blue paint, 35"H x 78"W x 22"D, needs to be re-upholstered, back legs were extended 3 1/2".	\$700.00
251	IVORY CARVING - Monumental oriental ivory, 5 1/2" dimensional carved cover depicting two figures under tree, main vessel stands 16 3/4"H, fully carved with Foo Dog handles with independent rings, floral & scroll work throughout with two deep relief panels	\$2,800.00
252	PARLOR TABLE - Circa 1880, carved rosewood, round stone top, chinese export parlor table, reticulated apron with carved apple blossoms, carved platform shelf stretcher base and carved legs, 27 1/2"H x 19"DIA, fine, original surface. Provenance: From the	\$350.00
254	SIDE CHAIR - 18th C country, Queen Anne Spanish foot side chair, yoke back with urn shaped back splat, heavy turned stretcher and box-form stretcher base ending on carved Spanish foot, 37"H x 20"W x 14 1/2"D, old red paint over black, old re-rushed seat,	\$275.00
256	IRON CHOPPERS - Collection of five early wooden handle, forged steel and iron food choppers, assorted sizes, good as found.	\$200.00
257	CREAM PITCHER - Mid 19th C fine brown pottery glazed cream pitcher, over glaze yellow oriental motif decoration with ornate top interior and exterior band with floral decoration on handle, white glazed interior, 4 1/2"H x 4"DIA, good condition, rim chip.	\$100.00
258	STORAGE JAR - One gallon gray stoneware storage jar with blue slip that reads ' John Weaver Stoneware Depot 14 Water St Cincinnati O ', 10"H x 7"dia, discoloration to glaze from firing process.	\$275.00
260	CUPBOARD - 19th C pine stepback two part wainscot cupboard with molded top over double door, base has bullnose molded edge over two doors with simple shaped feet, 80"H x 47 1/2"W x 16"D, good, hand scraped with traces of red and gray paint.	\$700.00
261	REDWARE JUG - 18th C half gallon brown glazed ovoid shaped redware jug, 9"H x 6 1/2"DIA, minor glaze chips, surface wear, chips on outer edge of unglazed redware base rim.	\$250.00
263	CANDLE STAND - 18th C solid cherry Queen Anne, round top candle stand, 25"H x 17 1/2"DIA, old surface. Provenance: From a private collection on Deer Isle Maine.	\$450.00

264	STONEWARE LOT - Two piece lot consisting of a 19th C red painted, brown glazed batter pitcher, 12"H x 7"DIA, chip on top edge together with a two gallon stoneware jug having a blue slip floral design, 15"H x 8"DIA, chipped and cracked.	\$150.00
265	WING CHAIR - Circa 1920, mahogany Chippendale style high wing back chair with ball and claw foot, in blue tapestry fabric, 48"H x 28"W x 25"D, good condition. Provenance: From the Estate of the RT. Rev. Robert Hunsicker, the Minister of Trinity Church,	\$575.00
266	OOB - Winter Village Scene, signed D.A. Hamilton (Portland, Maine), dated 1917, illegibly inscribed verso, in a replica ribbed and beaded cove frame, SS: 11 1/2" x 15 1/4", OS: 15 1/2" x 19 1/4", fine condition.	\$350.00
268	REDWARE STORAGE JARS - Collection of four 18th C pieces of unglazed redware with glazed interiors, three one gallon jars and a one quart beaker, from ^"H to 8 1/2"H, one piece has a crack.	\$250.00
269	WOOD BOX - Victorian era pine lift top, painted wood box, slant lid black painted with floral and scroll design on front and sides, 26 1/2"H x 24"W x 17 1/2"D, good condition.	\$600.00
270	CORNER CUPBOARD - Country 18th C French 2 part bow front corner cupboard with simple graduated three tier open top, mounted on two door base, thumbnail molded top over incised carved frame with raised panel doors mounted on large hand forged barrel hinges	\$1,550.00
271	FIRE BUCKET - 19th C, European hand stitched leather fire bucket, rawhide handle with reinforced rim, wooden staves stitched in tall tapered sides, 13 1/2"H x 9"DIA, dried, some loss of leather.	\$100.00
272	PAIR PASTELS - Portraits of a Young French Aristocratic Couple ca 1780, she in lace collared salmon pelise, he in brown coat with salmon waistcoat, cravat, unsigned, on paper stetched like a canvas, Mignon-Massart of Nice label verso on man's portrait, un	\$300.00
273	ARM CHAIR - Early 18th C Colonial arm chair, chamfered panel back with turned arms and front legs, plank pine seat with box stretcher, maple and pine with mortise and tenon pegged construction throughout, comes with old shaped leather seat cushion, 37"H x	\$550.00
274	HANDCOLORED ENGRAVING - Vue D'Optique made into a lithophane, view titled 'Vue Perspective du Marche au Vin vers L'Eglise - S. Ulrie le Long du Magazii sel Auguste a Augsbourg' Paris, Chez Basses Rus. The windows of all the buildings surrounding this town	\$200.00
275	COMMODE - 19th C French bow front commode with shaped demi-lune top and banded inlay, bellflower inlaid center surrounding oval painting of three cherubs, two drawer over two doors mounted on tapered spiral carved legs, inlaid throughout with painted oval	\$950.00
276	OOC- Portrait of elderly French Aristocratic woman in a fancy lace gown and bonnet, holding a fan, signed center left ' Forgeot pinxit 1770 ', in a replica gold cove frame, SS: 31 1/2" x 21", OS: 35 1/2" x 25", relined, overall fine craquelere, stretcher	\$600.00
278	JAPANESE WOODBLOCK - Kabuki Triptych by Toyokuni III (1786-1875) Oban Tate-e Yakuska ca 1852. In gold molded frame, pink silk mat, non-glare glass. SS: 9 1/4" x 14" each panel, OS: 19" x 34 1/2" overall. Laid down, stained, toned, chipped frame. Provenan	\$200.00
279	JAPANESE WOODBLOCK - Kabuki Triptych by by Toyohara Kunichicka (1835-1900) Oban Tate-e Yakusha publ. 1882. Featuring six warriors fighting. In gold molded frame, black silk mat, non-glare glass. SS: 9" x 13 1/2" per panel, OS: 19" x 33". Very good conditi	\$300.00
280	STORAGE CABINET - Two part 19th C oriental storage cabinet, top section has an assortment of sliding doors and drawers, base has two large sliding doors, dark stained softwood with hand wrought iron drawer pulls, 68"H x 75"W x 19"D, good, all original. P	\$900.00

281	JAPANESE WOODBLOCK - Kabuki Triptych by Kochoko Hosai, ca 1900. Depicts three Bijin with man pulling rickshaw in background. In silver molded wood frame, black silk mat, non-glare glass. SS: 9" x 14" per panel, OS: 19" x 32". Some stains, foxing. Provena	\$350.00
282	JAPANESE WOODBLOCK - Kabuki Triptych by Yoshu Chikanobu, ca 1880s. Depicts five warriors with two Bijin. In gold molded frame, black silk mat, glazed. SS: 9" x 13 3/4" each panel, OS: 19" x 33". Very good condition. Provenance: From a one owner Bar Harb	\$325.00
283	(3) JAPANESE WOODBLOCK PRINTS - Scenes from Noh Theatre by Tsusikoka Kogyo (1869-1927), ca 1926, Kinuta Uzemegawa, scenes from Noga Okagami Daigoban, unframed, SS: 9 1/2" x 14 1/4" each, trimmed, grimy. Provenance: From a one owner Bar Harbor collection	\$150.00
284	JAPANESE WOODBLOCK PRINT - Rare Torments of Infanticide by Kuniaki, dated 1862, depicting woman smothering a female baby, envisioning her punishment by demons and the babies she has murdered. Toshidama seal, Utagawa school. Unframed, SS: 10" x 14 1/4", to	\$250.00
284.1	JAPANESE WOODBLOCK - Minakuchi View #53 from ' 53 Stations of the Tokaido ', 1855, Oban Tate-e by Hiroshige I (1797-1858), in black stick frame, surface mounted, glazed, SS: 13 1/2" x 8 3/4", OS: 19 1/2" x 14 1/4", light foxing, overall very good.	\$225.00
285	CAPTAIN'S CHAIRS - Set of three pine, barrel back captain's chairs, circa 1860, black lacquer with gold paint decoration and an eagle stencilled on back crest, from the Waldo County Courthouse, Belfast ME, restored and redecorated by Miss Pauline Clement	\$275.00
286	PAIR W/C PITH PAINTINGS - ca 1820 large Chinese Ancestral Portraits in interiors, double matted and in replica flyspeck frames, SS: 12 1/2" x 7 1/2" each, OS: 18 1/2" x 13 1/2" each. Toning and foxing to backgrounds, tears in top of both. Provenance: Fr	\$325.00
287	CENTER TABLE - 19th C, Chinese export rosewood center table with inset marble top, hand carved reticulated apron on square legs with scroll feet, 35"H x 32"W x 32"D, very good condition.	\$1,200.00
288	PULLEYS AND DEAD EYES - Lot of nine early sail rigging pulleys and dead eyes, four lignum-vitae dead eyes and five small and medium size pulleys, good condition, weathered with normal wear.	\$225.00
289	NEEDLE CASES - Lot of four 19th C sail maker's needle cases, three are two part round turned with incised rings, black and brown stained, one is two part with chip carved surface, tapered ends, some contain needles, 7 3/4" AND 10", good condition.	\$200.00
290	SETTLE BENCH - 18th C poplar and soft wood American settle bench with an open low back, applied cut-out bracket feet and a double lift till seat for storage, possibly Pennsylvania origin, 32 1/2"H x 59 1/2"L x 17 1/2"D, minor shrinkage cracks, normal wear	\$550.00
291	JAPANESE WOODBLOCK PRINT - 'Le Bonze Errant' by Paul Jacoulet (French/Japanese, 1902-1960), signed lower right and with the peach seal, on 'JP' watermarked paper. Unframed. Image size: 15 1/2" x 11 3/4", Sheet Size: 18 1/2" x 14 1/4". Very good condition,	\$400.00
292	JAPANESE WOODBLOCK PRINT - Famous Places of Edo by Hiroshige, #8 of the Joke Series, Oban Tate-e, black stick frame, matted and glazed. SS: 13 1/4" x 8 3/4", OS: 14 1/2" x 9 5/8". Rubbed lower left, slightly grimy, laid down. Provenance: From a one owne	\$150.00
293	JAPANESE WOODBLOCK PRINT - Bijin Near Ocean by Toyokuni III, (1786-1864) Oban Tate-e, unframed, SS: 9 1/2" x 13 1/8". No borders, otherwise bright and fresh, lightly rippled. Provenance: From a one owner Bar Harbor collection.	\$300.00
294	JAPANESE WOODBLOCK PRINT - Man with Paddle at Ocean's Edge by Toyokuni III (Utagawa, 1786-1864), Oban Tate-e, unframed, SS: 9 1/2" x 13 1/4", no borders, otherwise bright and fresh. Provenance: From a one owner Bar Harbor collection.	\$150.00

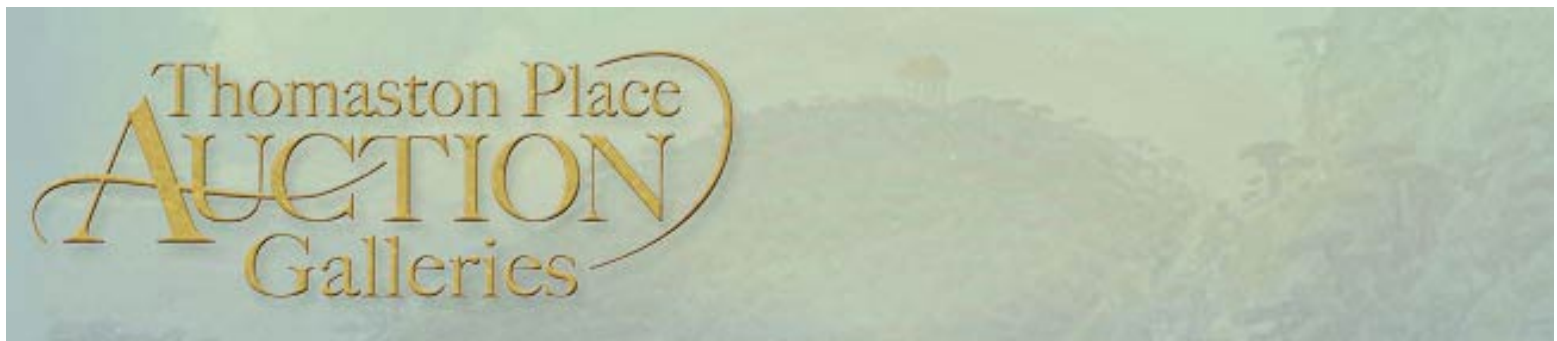
295	CHIMNEY CUPBOARD - Primitive country pine chimney cupboard, untrimmed wide pine boards fastened with old square clinched nails, natural exterior and white painted interior with five shelves, 78"H x 28 1/2"W x 14"D, good condition.	\$600.00
296	JAPANESE WOODBLOCK PRINT - Lady on Veranda by Toyokuni III (Utagawa, 1786-1864), Oban Tate-e, unframed, SS: 9 1/2" x 17 1/4", no borders, repaired lower right corner, minor grime. Provenance: From a one owner Bar Harbor collection.	\$150.00
297	JAPANESE WOODBLOCK PRINT - Lady Prepares Sumi Drawing with Servant by Toyokuni III (Utagawa, 1786-1864) Oban Tate-e, unframed, SS: 10 1/8" x 14 5/8", no borders, corner bends, minor grime. Provenance: From a one owner Bar Harbor collection.	\$200.00
298	JAPANESE WOODBLOCK PRINT - Lady Writing Letter with Lady in Waiting, by Kuniteru (pupil of Toyokuni I) Oban Tate-e, unframed, border trimmed, minor edge chips and tears. Provenance: From a one owner Bar Harbor collection.	\$300.00
300	TABLE - 18th C, Continental soft wood, stretcher base farm table, 28 1/2"H x 60"W x 30"D, old scrub finish, minor worm wood damage. Provenance: From a Damariscotta Maine estate.	\$650.00
302	JAPANESE WOODBLOCK WAR TRIPTYCH - Sino-Japanese War of 1894-95, Hand to hand combat on hillside in rain by unidentified artist. 14" x 28 1/2", laid down, edge chips, toned.	\$100.00
303	JAPANESE WOODBLOCK PRINT - Bijin by Yoshitoshi (1839-1892), with early signature, Oban Tate-e, publishers seal Meiji 13 (1881) for Tashizka Boijiro. Unframed. SS: 13 1/2" x 9", Sheet Size: 14 1/2" x 10". Full margins, minor bends, wrinkles, a few spots.	\$325.00
304	JAPANESE WOODBLOCK - #18 Sagami Gawa Oban Tate-e by Hiroshige (1797-1858) from the 36 Views of Fuji, published by Tsutaka Kichizo in 1858. This is a view from the river Sagami. In a faux bamboo frame, matted and glazed, SS: 9" x 13 1/2", OS: 20 1/2" x 15	\$275.00
305	GRAIN BOX - 18th C lift top pine grain box, old pumpkin paint over old gray, 19"H x 60"L x 17"D, scuffs and wear to surface, replaced hinges. Provenance: From a fine Somesville Maine home.	\$400.00
306	KITCHEN LOT - Seven piece lot of 18th and 19th C kitchen items, includes two brass ladles, one pair large iron shears, two long meat forks, one round spatula and one cast iron ladle, good condition.	\$225.00
307	LAMP STAND - Country Hepplewhite one drawer lamp stand, bullnose edge pine top on maple or birch base, single drawer with brass pulls and nailed corners, square tapered legs and old refinish, 27 1/2"H x 19"W x 19 1/2"D, old repair to top.	\$300.00
308	W/C - Coastal Scene with village and boats by Alice Biddle Foster, signed lower right, ca 1920, in vintage gilt molded stick frame, matted and glazed, SS: 8 1/2" x 14 1/2", OS: 14 3/4" x 20 3/4", very good condition.	\$375.00
309	PRAYER MAT - 1'7" x 3' - Oriental prayer mat with navy field, geometric designs in cinnamon and ivory, good condition.	\$300.00
310	DOUGH TROUGH - Early 19th C covered dough trough on legs, old two board top with underside cleats on dovetailed, tapered dough box, mounted on simple ring turned legs, natural unpainted surface, 29 1/2"H x 41"W x 24 1/2"D, old refinish. Provenance: From	\$350.00
312	SIDE TABLE - Country Sheraton, walnut two drawer side table, mortise and pegged construction, recessed panel sides, zig-zag cut-out on base of apron, original mushroom knobs, 29"H x 22 1/2"W x 21"D, old refinish, mellow color, separation lines in three bo	\$250.00
313	STONEWARE JUG - One gallon gray stoneware jug with incised swan and blue highlights, 12"H x 7 1/2"DIA, good, original.	\$50.00

314	DOCUMENT BOX - Early leather covered and brass studded small document box with original label 'Joshua Norwood, Saddle, Harness, Trunk, No 4 Exchange St, Bangor ME', with original lock, 7"H x 17"L x 11"D, scuff and abrasions to leather.	\$100.00
315	CARD TABLE - Period Hepplewhite, oxbow front, flip top card table, mahogany with pine secondary wood, fluted top edges with ribbon mahogany apron, mounted on square tapered legs, back leg swings for leg support, 29 1/2"H x 36"W x 18"D, old refinish, old r	\$550.00
316	BASKET - Large two handle splint basket, Circa 1900, 15"H x 21"DIA, minor roughness on two corners.	\$50.00
317	OOC - Alpine landscape having stucco house with water wheels, river with five male figures, two dogs, two cows and five horses, in original gold painted, matched corner frame, frame loss, light overall crazing, 1" paint loss in center of house, one repair	\$600.00
319	STONEWARE JUG - Two gallon gray stoneware, ovoid shaped jug with blue slip dot decoration, 14 1/2"H x 10"DIA, surface dirt, hairline in handle, large chip on underside of base rim.	\$100.00
320	BLANKET CHEST - 18th C two drawer blanket chest in salmon painted pine, chestnut secondary wood, molded edge top and drawers, snipe hinges, mushroom knobs and simple V cut-out ends of base, 35"H x 44"W x 16"D, old grungy surface, wear and paint loss, chip	\$600.00
321	OOC - Depicts ship's hull in crashing surf, circa 1880, unsigned, in original fancy gold leaf, plaster on wood frame, SS: 14" x 24", OS: 22" x 33", light crazing, frame has minor losses.	\$350.00
323	ARM CHAIR - 18th C high back English Windsor arm chair, nine spindle back with primitive shaped crest rail, shaped plank seat mounted on turned legs with •H• stretcher assembly, 39 3/4"H x 22"W x 19"D, good, seat has plank repair on bottom.	\$325.00
324	WHIRLY-GIG - Circa 1930 Folk Art whirly-gig with eight blades and two figures on push pull handle, painted red, white and blue, mounted on iron base, 70"H x 48"L x 28"DIA, weathered painted surface.	\$200.00
325	MEETING HOUSE BENCH - 19th C, single board plank seat bench, mounted on three turned leg bases and two rail back, old strap iron supports on back, 32 1/2"H x 11'11"W x 17"D, good, old refinish.	\$1,800.00
327	RAG RUG - 2'3" x 4'8" - Amish rag rug with panels of camel, olive green, mustard, red, black and brown, good condition.	\$200.00
328	BENCH - 18th C, pine plank top bench with mortised oak legs, 21"H x 41 1/2"W x 15"D, old refinish. Provenance: From a private collection on Deer Isle Maine.	\$600.00
329	WOODEN BOWL - Early round, turned maple bowl in robin's egg blue paint, 3 1/4"H x 11 3/4"W x 12 3/4"D, good, old patina and wear, minor shrinkage crack.	\$300.00
330	BLANKET CHEST - Early 19th C pine lift top bracket base blanket chest with forged iron strap hinges and interior molded edge till, 23"H x 44"W x 19"D, blue paint has some surface discoloration and normal wear scratches.	\$700.00
331	YOUTH CHAIR - 18th C virgin maple ladder back chair with woven splint seat, , 31"H x 15"W x 12"D, normal wear, natural finish, traces of old red paint.	\$155.00
332	MORTAR & PESTLES - Two 18th C mortar and pestles, one is red stained maple with forged metal band, the other in olive green paint, 8"H & 6 3/4"H, good condition.	\$275.00
333	LAMP TABLE - Old red stained, birch one drawer, country Hepplewhite stand, single board bullnose edge top, single drawer with glass pull, mounted on square tapered legs, 28 1/2"H x 20 1/2"W x 16 1/2"D, good condition. Provenance: From a private collecti	\$300.00

334	TOLE PAINTED LOT - Two pieces of tole painted tin in a floral design, an oval tea caddy and a rectangular bread basket, 12"H and 14 1/4"H, good, crazing, minor flaking.	\$50.00
335	WALL CABINET - Primitive 19th C, one door wall mounted country cabinet, dentil molded crest over single door with four raised panels having hand carved diamonds, interior has shaped shelf for hanging spoons, heavy dovetailed sides with original old red pa	\$425.00
336	CHAMBERSTICK - Circa 1800, tin push-up chamberstick with snuffer and rectangular tray base, 4"H x 10"W x 7 1/2"D, good, old patina.	\$100.00
337	BLANKET BOX - 18th C red painted pine, dovetailed blanket box with lift lid, applied molding on base and lid, 17 1/2"H x 42"L x 16"D, wear and scuffs to original paint surface, missing face trim on lid.	\$250.00
338	DECOY - Primitive carved and painted Canada goose decoy, rough hewn body with straight neck positioned to look back over right wing, painted white, black and gray, 13"H x 21"L x 10"W, good condition.	\$300.00
339	STONEWARE CROCK - Two gallon stoneware crock with blue leaf and floral design, 9 1/2"H x 10"DIA, rim chips, chip on right handle.	\$200.00
339.1	STONEWARE OYSTER JAR - Rare R.F.Savage Bath, ME one quart jar, salt glazed stoneware with wide mouth and applied handle, 5 1/2"H x 3 3/4"DIA, good, hairline crack in rim, traces of old red paint.	\$225.00
340	BLANKET BOX - Circa 1820, Pennsylvania lift top blanket box with mortise and pegged square corner posts raised on a 3 1/2" turned leg, 29"H x 55"W x 22"D, original old surface, black painted poplar, original hardware.	\$550.00
341	JAPANESE WOODBLOCK PRINT - Bijin-ga by Toyokuni III (Utagawa, 1786-1864) Oban Tate-e, border trimmed right and bottom, minor edge chips, grime at top. Provenance: From a one owner Bar Harbor collection.	\$300.00
342	JAPANESE WOODBLOCK WAR TRIPTYCH - Sino-Japanese War of 1894-95, Japanese Battleship sinking Chinese Junks by Gekko Ogata (1859-1920), signed and with four seals. 14" x 28 1/2". Unframed, laid down, edge toned.	\$350.00
343	JAPANESE WOODBLOCK WAR TRIPTYCH - Sino-Japanese War of 1894-95, Japanese Officers on horseback observing valley wetlands battle from hillside at night by Kiyochika Kobayashi (1847-1915), signed and with seals. 14" x 28 1/2". Unframed. Laid down, minor ton	\$425.00
344	JAPANESE WOODBLOCK - Fujieda View #23 from ' 53 Stations of the Tokaido ', 1855, Oban Tate-e by Hiroshige I (1797-1858), in black stick frame, surface mounted, glazed, SS: 13 1/2" x 8 3/4", OS: 19 1/2" x 14 1/4", light foxing, overall very good.	\$250.00
345	PAIR JAPANESE WOODBLOCK PRINTS - Pillar (Hashira) prints of Bijin by Isoda Koryusai (1735-1785), one woman depicted in a snowy landscape, two women depicted in interior with books, these are 18th century prints, unframed, SS: 5" x 28 1/2" each, toned,tri	\$450.00
346	HARVEST TABLE - Custom made, tiger maple country Hepplewhite style harvest table, custom made by Windsor Chair Makers, Lincolnville ME, well constructed with choice tiger maple, comes with two 10" end extensions, apron has beaded edge, mounted on square t	\$600.00
347	STONEWARE CROCK - Five gallon stoneware crock with blue stylized flower, made by ' J S Taft & Co, Keene NH ', 12 1/2"H x 13"DIA, hairline crack in back, minor chips on the left handle.	\$225.00
349	CROCK - Two gallon crock with blue flower and leaf decoration, marked 'F H Cowden Harrisburg', 10"H x 10 1/2"DIA, one chip on inside and outside top edge rim. Provenance: From an Estate in Camden Maine.	\$450.00

350	DESK - Country Hepplewhite tapered leg, slant lid, country store desk, large single drawer with four small interior drawers, maker's name stenciled inside of lid 'J Bean, Montville', 37"H x 34"W x 19 1/2"D, old refinish, minor old repairs, replaced knobs.	\$350.00
351	JAPANESE WOODBLOCK - Oban Yoko-e by Ando Hiroshige from 'Eight Views of Omi', 1834, #6, Descending Geese at Katata 'Omi Hakke-Nu Uchi', published by Hokeido & Yeisento, unframed, shrinkwrapped, SS: 10 3/8" x 14 7/8", very good condition, full margins.	\$125.00
352	JAPANESE WOODBLOCK - Oban Tate-e, 2 panels of a Triptych by Toyokuni II, depicting Kabuki actors, unframed, shrinkwrapped, 14 3/4" x 20 1/4" overall, bottom edge trimmed, laid down.	\$150.00
353	JAPANESE WOODBLOCK - Oban Yoko-e by Ando Hiroshige, from '53 Stations of the Tokaido', Hoeido edition, #40 Suhara, depicting Zen Priests taking cover from a sudden rain at the Jushoji Temple, unframed, shrinkwrapped, SS: 8 1/2" x 13 3/8" very good condition	\$200.00
354	JAPANESE WOODBLOCK - Oban Yoko-e by Ando Hiroshige, from '53 Stations of the Tokaido', #6 Totsuka, unframed, shrinkwrapped, SS: 9 5/8" x 14 1/4", toned, full margin, publishers seal intact.	\$175.00
355	JAPANESE WOODBLOCK - Oban Tate-e OF Bijin by Kochuro Kunisada, later Toyokuni III (1786-1865), published by Moriya Jikei, 1832, with gauffrage, unframed, shrinkwrapped, SS: 14 1/2" x 10", trimmed to edge, grimy at lower edge.	\$175.00
356	BENCH - 18th C red painted, softwood bucket bench, legs are mortised through top, molded edge front apron, nicely cut-out half moon shape on base of legs, Ohio origin, 24"H x 54"W x 18"D, top has extensive wear and chop marks. Provenance: From a fine So	\$200.00
357	CHILD'S WAGON - 19th C primitive child's pull wagon, old red painted pine with solid wood wheels, folding pull handle on pivoting front axle, iron reinforced wood undercarriage, 15"H x 39"D x 24"W, good, all original.	\$400.00
358	STONEWARE CROCK - One and a half gallon gray stoneware butter crock with a blue slip three leaf clover decoration and a blue slip leaf decoration on the cover, 7 1/2"H x 11"DIA, several rim chips.	\$300.00
359	CHILD'S PULL SLED - 19th C painted wood and metal child's pull sled with gold painted initials 'M E M', 4"H x 39"L x 13 1/2"D, losses to paint, shrinkage cracks.	\$50.00
363.1	VASE - Fine Imperial cloisonne vase, narrow neck with bulbous base, ivory field with bird on branch with blossoms, intricate geometric and leaf pattern on neck, 7 1/2"H x 4 1/4"Dia, very good condition.	\$400.00
364	JAPANESE WOODBLOCK - Oban Tate-e BY Ando Hiroshige, from 'Famous Views of Sixty Odd Provinces', #46, The Yambashi Gorge in Mumasha Province, Rokojuyoshi Meisho Eve, 1853-56, published by Koshikei, unframed, shrinkwrapped, SS: 9 1/4" x 13", some margin le	\$600.00
365	DINING TABLE - Country Sheraton drop leaf dining table with flame birch top on maple base, "D" shaped drop leaves and ringed turned legs, 28 1/2"H x 42"W x 17 1/2"D, good condition. Provenance: From a Lincolnville Maine estate.	\$350.00
366	CHINESE REVERSE PAINTING - Women playing game on veranda, servants and children nearby, potted flowers line garden railing, distant bay and mountains, in teak molded frame with figural brass hanger, SS: 16" x 23 1/2", OS: 18 1/2" x 26", very good condition	\$350.00
370	CARD TABLE - Sheraton period mahogany card table with molded top edge and swing rear leg leaf support, simple apron on turned and fluted legs, pine subwood, in old red stain, 30 1/2"H x 35 3/4"W x 18 1/4"D, large area of veneer missing on side of apron, s	\$250.00
371	IRON IMPLEMENTS - Three piece iron lot consisting of an 18th C forged iron peel with fiddle tail handle, 49"H, an 18th C forged iron toaster, 15"H together with an 18th C forged iron grease lamp, 7"H, all good as found.	\$250.00

372	STORAGE BOX - Early 19th C brown and yellow sponge decorated white wood rectangular storage box, 6"H x 13"L x 7 1/2"D, fine, untouched surface.	\$100.00
373	STONEWARE CROCK - Ovoid shaped stoneware two gallon crock with a large blue slip floral decoration, embossed ' Gowden & Wilcox, Harrisburg, PA ', 10 1/2"H x 9 1/4"DIA, some glaze discoloration, minor chips on right handle, fine trace hairline crack on the	\$400.00
374	ROCKING CHAIR - 18th c, bow back rocking arm chair, eight spindle back with scroll end arms, old black painted surface, unusual low form, 31"H x 19 1/2"W x 21"D, good, missing center back spindle.	\$100.00
375	LAMP STAND - Sheraton period, two drawer lamp stand, crotch split mahogany top with braided edge inlay and applied bull nose molding, turned wooden pulls on mahogany veneered poplar drawers, mounted on ring turned legs, 29 1/2"H x 19"W x 16 1/4"D, some ve	\$300.00
376	STONEWARE JUG - Two gallon ovoid stoneware jug with a simple blue slip leaf design on body and handle, 13"H x 9"DIA, minor production imperfections.	\$175.00
377	STAND - Country Sheraton pine, turned leg, one drawer stand in old red painted surface, 29"H x 18"W x 17 1/2"D, good, traces of white overpaint. Provenance: From a private collection on Deer Isle Maine.	\$200.00
378	DOLL CRADLES - Lot of two country pine doll cradles, #1 - shaped with open top on simple rockers, natural finish, 7 1/4"H x 16"W x 9 1/2"D, #2 - black painted pine with gold striping, hooded top on wide rockers, 14 1/2"H x 17 1/2"W x 14 1/4"D, good condit	\$125.00
379	LAMP TABLE - One drawer, country Sheraton period birch lamp table, one piece bull nose edge top, dovetailed pine drawer with replaced pull, mounted on ring turned legs, remnants of old red paint, 28 3/4"H x 21"W x 18"D, old refinish. Provenance: From an	\$325.00
380	DOUGH BOX - Early pine table top covered dough box, nailed construction with two handled lid, tapered box with traces of old red paint, 11"H x 27"W x 12"D, good condition.	\$100.00
381	OOB - Impressionist study of coastal scene with headland and sailboats, unsigned, ca 1910, in ribbed oak frame, SS: 9 3/4" x 13 1/4", OS: 12 3/4" x 16 1/4", flaking on left side.	\$125.00
382	STONEWARE CROCK - Four gallon stoneware crock with blue lettering and graduated line below, made by ' Jacob Zipfs, Union Pottery, Newark, NJ ;, 10 1/2"H x 11 1/2"DIA, horizontal crack running along base, two surface pits, X shaped crack on underside.	\$100.00
383	SIDE CHAIR - Late 18th C, seven spindle bamboo turned, bow back Windsor side chair, with a carved shield shaped plank seat in a bamboo turned stretcher base, 38"H x 17"W x 16"D, old refinish.	\$350.00



Lot	Item Description	Hammer Price
500	SCULPTURE - Contemporary wood folk art sculpture by Ric Rudolph 1978, titled Animal Train depicts various animals in an ark type vehicle, in natural weathered pine with carved and painted animals, 39"H x 31"L x 14"W, very good condition. Provenance: Fro	\$1,200.00
501	HOOD ORNAMENT - Early automobile silver mounted, crystal hood ornament by Lalique, 4"DIA with frosted center recessed image of St. Christopher (patron of travelers) carrying a child on his shoulders, cut and polished faceted edge, 6 1/2"H x 4"DIA x 5/8"D	\$750.00
502	JEWELRY SUITE - Mexican sterling and enamel suite, a necklace, bracelet and earrings inlaid with geometric turquoise enamel in a geometric motif, signed 'JS', 15"L necklace, 7"L bracelet, very good condition.	\$200.00
503	CRAZY QUILT • 56• x 56• • Late 19th C crib size crazy quilt, vibrant assortment of shapes and colors with center fan, assorted stitch work with applied red backing, very good condition.	\$175.00
504	WOOD CARVING - Hand carved garden sculpture depicting two toads, stained in a dark color with varnished coat, 15"H x 16"W x 16"D, good, shrinkage cracks.	\$140.00
505	SCULPTURE - Rare oriental export valentine sculpture, circa 1850, basket of flowers in shell and silver wire with butterflies, original period glass dome, 19"H x 19"D, good condition.	\$900.00
506	OOCB - 'Toy, A Champion Pug Dog' signed ' Hopkins ' and dated '41, brass tag reads 'Toy, Sre Dixie Shubby Boy, Dam Fairy Queen of Man II, born July 6, 1940'. In red oak and painted muslin panel frame, SS: 15 3/4" x 19 1/2", OS: 24" x 27 1/2", very good co	\$475.00
508	TABLE LAMP - Round 'chipped ice' reverse painted and surface painted bronze base table lamp with original label 'Pittsburgh Lamp Base & Glass Co, no 1397', shade 6"H x 14:DIA, 20"H, shade is perfect, mismatched base.	\$675.00
509	JARDINIERE - English Majolica tapered, square jardiniere on feet, shaped crown rim with top and bottom band, yellow and lilac with marbelized green/brown panels, unmarked, 9"H x 7 3/4"W x 7 3/4"D, very good condition.	\$400.00
510	TABLE - Round rosewood center table with carved and reticulated apron, 29"H x 39"DIA, old French polish.	\$2,200.00
511	OOC - Equine Portrait of the Stallion 'Lawrence' by P.B. West, dated 1883 and sigend lower left, unframed, 20" x 24", relined, three old repairs, along with the large silverplate Trophy won by this horse at the 1888 Maine State Fair in Augusta, run at the	\$1,500.00
512	VASE - Art Nouveau Loetz glass vase with pewter mounted handles, 9 1/2"H x 5"DIA, fine condition.	\$350.00
513	JEWELRY LOT - Five piece jewelry lot consisting of two Mexican silver brooches, a leaf motif, signed 'L B S', 3"L, and an abstract leaf motif with an oval malachite drop, monogrammed 'C A', 2 1/2"H x 2 1/4"W, bracelet composed of sterling plaques set with	\$250.00

514	SHAVING MIRROR - Early 19th C, mahogany shaving mirror, delicate turned mahogany posts hold original old glass mirror with brass fittings, base has banded inlay top with single string inlaid drawer and ivory pulls, 16 1/2"H x 15"W x 8 3/4"D, all original.	\$300.00
515	CHAIRS - A lady's, gent's and three side chairs, walnut with lion head arms, covered in brocade upholstery, 47"H x 26"W x 24"D gent's chair, good condition.	\$700.00
516	W/C - Owls Head Lighthouse, Rockland, Maine, by Charles Copeland (MA, 1858-1945), signed lower left, ca 1905-1910, in vintage gold painted ribbed molded frame, glazed, SS: 13 1/4" x 19 1/4", OS: 25" x 32", untouched condition, very minor foxing in sky.	\$1,000.00
517	WALL THERMOMETER - Silvered bronze wall thermometer on oak panel with raised swallow and floral design by 'Wm H Tomey, Oct 1887', made by Armington Art Metal Co, thermometer by Charles Wilder, Peterboro NH, sold by Caldwell & Co, Philadelphia, 14"H x 7 1/2"	\$1,000.00
518	SHOE/BOOT RACK - Late 19th C mahogany English standing shoe and boot rack, brass handle mounted on top cross member with twelve pegs, middle shelf has twelve slots to hang boots with single lower shelf, all supported by two turned posts mounted on shoe fo	\$225.00
519	BOTTLE STOPPERS - Collection of twelve carved and painted German figural, mechanical bottle tops mounted on an 18th C red painted, soft wood, stepped form rack, average size stopper is 3"H, two have chips on hat rims.	\$600.00
520	DESK - Victorian two part walnut cylinder desk, circa 1885, 92"H x 40 1/2"W x 22 1/2"D, fine condition.	\$1,300.00
521	OOP - ' The Pseudolucanus Reconsidered ' by John Wilde (WI, 1919 - 2006) signed and dated 1954, depicting several nude women around an enormous beetle, in original gold leaf frame with linen & gold liner, SS: 10 1/2" x 23 1/2", OS: 15 1/2" x 28". Fine con	\$21,000.00
522	CLOCK • Rare French Boule shelf clock with shaped case covered in tortoise shell & inlaid with scroll & engraved brass, gilded brass gilded bronze frame around a miniature on tin depicting St. Christopher, base is inlaid with 3 gem quality pieces of blue	\$3,000.00
523	SILVER SERVING LOT - Four piece lot of fine silver serving pieces, #1 - sterling serving fork by A Stone, reticulated dolphin on handle, engraved KDW 1918, #2 - large sterling hand hammered serving spoon, engraved W, unmarked, #3 - hand hammered sterling	\$275.00
524	LAMPS - Pair of English pottery kerosene 'Gone with the Wind' lamps, brass mounted with etched glass shades, circa 1880, 26"H x 10"DIA shades, good condition.	\$750.00
525	VITRINE - 19th C black lacquered cherry vitrine, made by 'Herter Brothers New York', simple back splash over flat front and bowed sides, relief carved molding with square reeded columns, open shelves flank beveled glass central display case, single drawer	\$4,750.00
526	OOC - Cat Sitting in Midst of Chicks by Percy Sanborn (Maine, 1849-1929), with the mother hen protesting from behind the fence at right, one chick stands on the kitty's tail. In a later gold cover frame, SS: 15 1/2" x 19 1/2", OS: 18 1/2" x 22 1/2", fine	\$8,500.00
527	FINE PORCELAIN FIGURINE - Apollo and Daphne after the Bernini (1598-1680) by Meissen, with blue crossed sword mark, depicting Daphne at the moment of her transformation into a tree. 14" tall, 5" square at base, some repairs. A very fine example.	\$3,100.00
528	LEADED WINDOW - Large leaded slag glass window from the Helen Hayes Theater NYC, central female face flanked by torches and floral ribbons, set with colored jewels in original wood frame with reinforcement bars, 39"H X 64"W, very good condition.	\$1,600.00
529	PAIR MARY GREGORY VASES, GIFT OF MARY TODD LINCOLN - Given to Alice D. Shipman by MTL, includes copies of letters from MTL to ADS while MTL was taking the cure in Bavaria in the 1870s and a copy of 'The Perfect Tribute' by Mary Raymond Shipman Andrews, da	\$1,000.00

530	DESK - Rosewood captain's desk, circa 1860, 36"H x 30 1/2"W x 22"D, minor trim pieces detached (in drawer).	\$1,200.00
532	TABLE PLANTER - Capodimonte hand painted and gilded planter, depicts an astrologer advising the Queen, the four corners have raised, gilded lion heads and base has paw feet, superb example of high quality porcelain, 10"H x 13 1/2"W x 5"D, professional rep	\$600.00
533	GROTTO CHAIR - 19th C carved wood, shell form Italian grotto chair with dolphin arms, original old surface, 36 1/2"H x 22"W x 23"D, minor shrinkage cracks, toe missing from right rear leg. Provenance: From the Estate of the RT. Rev. Robert Hunsicker, th	\$900.00
534	CHANDELIER - Late 19th C four arm gas chandelier, fancy brass scroll work with center twist column, each arm has original gas valve and ruffled edge etches glass shades, comes with one old original mantel, 44"H x 28"W, good, all original, never electrified	\$1,900.00
535	BEDROOM SUITE - Three piece Victorian walnut marble top bedroom suite, set consists of commode, dropwell dresser and bed, polished white marble tops and applied burl walnut highlights, brass and ebony 'T' pulls, interior labels by Souther and Hooper Hayma	\$1,000.00
536	OOO - Period French Barbizon School oil on canvas depicting a man driving five cows on a stormy day, in a fancy gold leaf on plaster embossed original period frame, SS: 22" x 28 1/2", OS: 34" x 41", minor crazing in sky, good overall condition. Provenance	\$2,000.00
537	VASES - Pair of circa 1870-80 cast bronze vases, ornate double handle vase with vines, leaves and fruit, applied winged putti sitting on shoulder, mounted on jasper bases, signed R. Moreau, 14"H x 5 1/2"DIA, very good condition, all original.	\$2,000.00
538	STERLING FLATWARE - Seventy-two piece sterling flatware by Tuttle, Onslow pattern, set consists of 12 butter knives, 12 dinner knives, 12 tea spoons, 12 soup spoons, 12 salad forks, 12 dinner forks, all in custom wooden box, very good condition.	\$4,400.00
539	WALL CLOCK - Circa 1890-1900, octagon top advertising wall clock, eight day brass time only movement, distributed by 'RA Patterson' for Lucky Strike Tobacco, lettered dial and paper label on back with gold lettered lower door 'Woodbury & Latham Portland M	\$750.00
540	BOOKCASE - Victorian period walnut two part bookcase, shaped crest with applied bird and carvings over two glass doors with five adjustable shelves, mounted on two door base, poplar secondary wood, bench made by Paine's Furniture Boston, 89"H x 42 1/2"W x	\$1,200.00
541	OOO - ' A Misty Morning ' by Henry Stephens Eddy (NY, 1878-1944) signed II, depicting sailboats in harbor in all pale blue palette knife impasto. Henry Eddy studied under John Twachtman and exhibited at the Art Institute of Chicago. In a handcarved Arts	\$1,800.00
542	SLIPPER CHAIR - Superb example of English Victorian beadwork on walnut framed slipper chair, wide upholstered crest flanked by turned and fluted columns with matching legs, black, white and gray, grape and leaf design on red background, 35"H x 18"W x 24"D	\$650.00
544	RUG - 4'1" x 5'2" - Mid 20th C South Iran, Afshar hand woven rug, stepped triple medallion on black field, overall geometric design in red, royal blue and camel, excellent condition.	\$600.00
547	FOOTED TAZZA - Tiffany gilded embossed bronze with enameled detail, marked on underside of base ' Louis C. Tiffany Furnaces, Inc. Favrilie, No. 519 ', 7 3/4" diameter, 3" tall overall, some wear to the gilding.	\$700.00
548	CARPET - 10'10" x 14'8" - Oriental rug with center diamond shaped stepped medallion on red stepped medallion on blue field, geometric designs in ivory, salmon, mustard and green, several worn areas.	\$300.00

549	PENDANT - A white gold drop style pendant centered by a prong set round brilliant cut diamond, weighing 0.35 ct, with G-H color and VS2/SI1 clarity, accented with fourteen diamond meles with 0.25 ct tw, having average clarity grade of VS1 and color G-H,	\$650.00
550	WOODCUT - ' Day and Night ' by M.C. Escher (Mauritus Cornelis, Dutch, 1898-1972) in black and grey, pencil signed and inscribed 'eigen druk' in lower margin, executed in 1938 on Japan paper, in wood box frame, matted and glazed, SS: 15 5/16" x 26 5/8", OS	\$19,000.00
551	LITHO - 'Mosaic' by M.C. Escher, 1957, pencil signed and numbered 48/53 II, a Surrealist image of intertwined men, beasts, fish and demons, one of Escher's most famous, in mahogany box frame, linen mat, glazed, SS: 15" x 17", OS: 24" x 25 1/2", fine condi	\$11,500.00
552	COLOR INK DRAWING - ' Tulips ' by David Hockney (NY, 1937-) initialed DH and titled in black, with COA, in gold and green molded frame, matted and glazed, SS: 8" x 10 1/2", OS: 21" x 17 1/2", fine condition.	\$2,750.00
553	VIENNA REGULATOR - Early 1860's Gustav Becker triple weight, wall mounted Vienna regulator, s/n 6969, fine brass eight day double coil song striking movement with two part enamel dial and keyhole slot mounts, mounted in mahogany case with floral carved cr	\$1,100.00
554	OOCB - Abstract by Robert Goodnough (NY, 1917- ?) unsigned, mid-1950s, surface mounted on linen, gold edged slat frame, SS: 7 1/2" x 9 1/2", OS: 12 1/2" x 14 1/2", fine condition.	\$1,600.00
555	ETEGERE - Rosewood five shelf etegere with serpentine front and hidden drawer, circa 1860, 59"H x 39"W x 16"D, minor chips to fretwood.	\$600.00
556	OOC - ' White Head, Monhegan Island ' by Josef M. Arentz (MD, 1903-1969), signed II and dated 1968, titled verso, in a gold painted cove frame, cream liner, nameplate, SS: 23" x 35", OS: 29" x 41", good condition, one area of craquelere in sky.	\$800.00
557	RUG - 5'2" x 8'8" - Hand woven Qashqai Southwest Persia, four medallions on brick red field, overall floral and geometric designs in pumpkin, ivory and dark green, good condition.	\$700.00
558	TRAVEL/CAMPAIGN WRITING DESK - Fine English folding desk made by ' John Sazshaw & Sons Liverpool ', rosewood exterior with fine tooled leather and oak interior with brass hardware, from the estate of Ruth Ellen Patton, daughter of Gen George S Patton, pur	\$1,400.00
559	URN ON PEDESTAL - Three part Meissen porcelain covered urn on pedestal with heavy raised floral motif, hand painted figural scene and floral bouquets with gilded trim, 18 1/2"H x 6"SQ, multiple small damages on flowers and finial.	\$200.00
560	DINING CHAIRS - Set of eight classical style dining chairs consisting of six side and two arm chairs with green and ivory checked upholstery, curved bow back, sabre leg dining chair with bronze leaf shaped ormolu mounts on front legs and brass fitted feet	\$1,000.00
561	W/C - ' Above Toledo ' by William Thon (NY/ME, 1906-2000), signed Ir & II, dated 1966 and titled verso and marked #350, a classic Thon abstract of trees, groves and architecture rendered in canary yellow, ochre and black. Vintage J.L. Hudson and Midtown G	\$1,950.00
562	BRACELET - 14K gold, pearl and cabuchon emerald bracelet, designed with a center line of pearl and emerald bead florets, bordered by a gold rope twist chain with box clasp, 7"L x 1/2"W, good condition.	\$750.00
564	SHAVING MIRROR - Early 19th C, mahogany floor mounted gentleman's shaving mirror, ripple framed, octagonal with applied crest, mounted in adjustable height yoke mount, turned pedestal mounted on three foot base, 66"H x 15"W, good condition	\$600.00
566	W/C, GOUACHE - ' First Snow, Kinney House, St. George, Maine ' by Gary Akers(KY/ME, 1951-), signed lower right, a realist depiction in drybrush, in a silver leaf molded frame, matted and glazed, SS: 16" x 29 1/4", OS: 27 1/4" x 41", fine condition.	\$1,750.00

567	BRONZE SCULPTURE - 40" life size, hollow cast bronze of young girl standing with water jug in hand, signed on platform base, 40"H, good, natural patina.	\$2,000.00
568	CARPET - 9'10" x 14'8" - Kirman oriental carpet with elongated lobed oval medallion surrounded by floral sprays on ivory field, overall floral motifs with boteh, irregular scroll border with floral motifs, soft tones of rose, slate blue and seafoam green,	\$500.00
569	SALESMAN'S SAMPLE - Rare miniature cabinet maker's sample of a round mahogany tilt-top, Victorian marquetry inlaid and carved table, the inlay is satinwood, rosewood, ebony and boxwood in a star pattern, 5 1/2"H x 8"DIA (top down), 10 1/4"H (top tilted).	\$1,700.00
570	VITRINE- Circa 1890-1900, two section carved rosewood vitrine, bamboo carved with reticulated crest over two glass door display with offset interior shelves, base has two drawers over two doors, ornately carved with reticulated apron on short cabriole leg	\$1,100.00
571	INK DRAWING - ' Low Tide at Manomet ' by Alfred Thompson Bricher (MA, 1837-1908) signed and dated '83, inscribed 'Drawn expressly for The Recorder by AT Bricher, ANA from his original painting', in birdseye maple panel frame, gilt liner, black mat, glazed	\$1,200.00
572	RUNNER - 2'1" x 6' - 20th C Pakistan, Bokhara runner, fourteen medallions in center panel, border with panels of geometric medallions, soft wool with emerald green, salmon and white, excellent condition.	\$175.00
573	VIENNA REGULATOR - 19th C 'Gustav Becker' double weight eight day time and strike wall mounted regulator, ivory dial with seconds bit, shell carved top with eagle finial, ring turned split columns, mahogany and mahogany stained maple, 52"H x 20 1/2"W x 8"	\$1,200.00
574	CHANDELIER - Late 19th C three arm gas chandelier, fancy brass scroll work with center twist column, each arm has blown glass white ovoid shaped chimney, 44"h x 24"DIA, good, never electrified, missing burners and shades.	\$950.00
575	BRONZE - Circa 1980 large replica bronze of James Earl Frazer's End Of The Trail, mounted on oval shaped marble base, uniform brown/green patina, 34"H x 30"W x 10"D, good condition. Provenance: From a one owner Bar Harbor collection.	\$500.00
576	MONUMENTAL COLOR LITHO - ' Red Cloud, Sioux ' by Leonard Baskin (NY, 1922-2000) dated 1974, series 47/100, pencil signed, a bust portrait, in gold molded frame, matted, under plexiglas, SS: 26" x 30", OS: 36" x 47", fine condition.	\$750.00
577	RUNNER - 3'4"x 10'10" - Hand woven Heriz, Northwest Persia, with five square gabled medallions and two hooked diamond shaped medallions on brick red field, overall geometric motifs, navy and slate blue, ivory and camel, small tear to one corner.	\$1,700.00
578	DECANTER AND FLUTES - Eight piece lot consisting of a crystal decanter and seven champagne flutes by Baccarat, decanter is 11"H x 4"DIA, flutes are 8 1/2"H x 2 3/4"DIA, good condition.	\$425.00
579	EWER - Middle Eastern, hand hammered silver ewer, Circa 1880-90, heavily encrusted with figural silver work and multiple set natural stones, turquoise, lapis, carnelian and coral, removable cover with attached chain, open handle with long narrow spout on	\$500.00
580	MURPHY BED - Circa 1865 solid walnut folding Murphy bed, faux dresser front with lion head drawer pulls, drop down top panel with folding legs, opens to make a single bed with original mesh spring, made by L C Boyington Chicago, 62 1/2"H x 48"W x 26 1/2"D	\$500.00
581	MONUMENTAL COLOR LITHO - Portrait of American Indian in a horizontal oval format by Leonard Baskin (NY, 1922-2000) dated 1974, series 46/100, pencil signed, depicted in waist length view with arms crossed in grey blanket, in gold molded frame, under plex	\$500.00

582	FOLK ART BOXES - Lot of three Circa 1900 Folk Art inlaid boxes, #1 - 4 1/4"H x 10"W x 5 1/4"D, pine with diamond inlay, removable top, #2 - 7"H x 15 1/2"W x 8"D, pine with geometric inlaid hinged cover with star inlay on front, interior removable tray, #3	\$250.00
583	SHELF CLOCK - 19th C French gilded bronze figural clock under dome, female figure at writing desk on white marble base, dial marked 'C Defouche Ft 156 & 160 Rue St Martin', eight day time and strike movement, mounted on mahogany base with ball feet, 22"H	\$1,300.00
584	BRACELET - 14K YG link bracelet, composed of double circular links completed by a push button box clasp, high polished finish, 28.4 dwt, 7 3/4"L, good condition.	\$875.00
585	LOVE SEATS - Matched pair of Victorian era love seats, walnut framed with hand carved floral crest, scroll terminations on arms, serpentine front with shell and leaf carvings, covered in peach colored floral tapestry upholstery, 38 1/2"H x 64"W x 30"D, go	\$1,200.00
586	OOO - Portrait of a North African Woman by John Yello (Calif, 20th c), label verso from Otis Art Institute of LA County, in replica gold panel Arts & Crafts frame, SS: 16" x 20", OS: 23 1/2" x 27 1/2", one minor scratch.	\$400.00
587	VASE - Large Lalique frosted and clear vase with raised flying swallows, has tapered base, 10 1/2"H x 6 1/4"DIA at top, perfect condition.	\$500.00
588	PHONOGRAPH - Edison table top cylinder Gem phonograph, maroon enamel surface in oak carry case, comes with two tin horns and thirty-three cylinder records, 8 1/2"H x 10"W x 7 1/2"D, good, main spring broken. Provenance: From a Lincolnville Maine estate.	\$800.00
589	LAMP SHADE - Leaded slag glass lamp shade, unsigned, with elongated blue/green top panels and small amber flower blossoms around lower rim, 6 1/2"H x 14"DIA, some cracked rim panels, none missing.	\$575.00
590	LIVING ROOM SUITE - Circa 1920-30, four piece upholstered living room suite consisting of sofa, gent's chair, lady's chair and foot stool, floral carved mahogany frames with floral and scroll carving on crests, arms and legs, upholstered in fuschia, seafo	\$700.00
591	W/C - Beech Hill, Rockport, Maine by Ronald Frontin (Maine, 1962-), depicting a ramshackle stone building on crest of hill, pines to right, signed lower right and dated '98. In gold flyspeck molded frame, matted and glazed. SS: 20" x 39 1/2", OS: 32" x 5	\$2,700.00
592	AREA RUG - 4' x 6' - Caucasian pattern rug in red, dark green, slate blue and white, good condition.	\$475.00
594	FOOT STOOLS - Pair of Victorian era, walnut foot stools, diminutive 8"dia beadwork on maroon fabric, depicts torch and arrows with floral design molded bases on three turned ball feet, 5"H x 8: DIA, very good condition.	\$425.00
595	VITRINE • French Louis XV style 1920•s gilded wood vitrine, triple bowed glass with glass shelves & mirrored back, applied brass scroll & leg mounts with wide molded top, 57•H x 27•W x 15•D, good condition.	\$1,000.00
596	OOO - Landscape with Cows and Figure by Lola M. Spencer, unsigned, attribution based on attached document, in a gold painted replica frame, SS: 16" x 24", OS: 23" x 30 1/2", cleaned, relined, some inpainting in sky, fold to lower left corner. Provenance:	\$975.00
597	MASTER SALTS - Pair of sterling footed master salts, marked ' Tiffany & Co Union Square 470-378 ', raised geometric border with applied ram heads mounted on three hooved legs, 4.20 ozt tw, 1 3/4"H x 2 3/4"DIA, good condition.	\$275.00
598	SILVER INGOT COLLECTION - Seventy-five piece commemorative silver ingot collection, cast silver one oz ingots depicting classic automobiles, minted by The Franklin Mint, in a custom oak chest with leather straps, comes with book on each model of car, good	\$1,250.00

599	COMPOTE - Two part Meissen porcelain compote, oval reticulated floral encrusted bowl, pedestal has two cherubs with raised floral decoration, 13"H x 11"W x 7 3/4"D, restoration to body of one cherub, minor repairs to petals.	\$400.00
600	LADY'S RING - Period Art Deco 14K white gold mount centered by a 21.10 ct natural round, fancy yellow/brown diamond with SI1 color, surrounded by shaped white diamond baguettes, with GIA certificate.	\$145,000.00
603	WALL CLOCK - Ansonia mahogany cased, 8 day time only wall clock, molded wooden bezel with original paper dial, dropped bottom pediment with reverse glass painted door, original interior paper label, 24 1/2"H x 16"W x 4 1/2"D, good, all original.	\$300.00
604	YOUTH ROCKER - 19th C, Boston style youth rocker, shaped back splash on spindle back, scroll shaped arms and cane seat on turned legs, original old red painted surface, has sailboat on rocky coast painted on crest and yellow scroll decoration, paint attri	\$175.00
606	OOO - Hudson River School depicting Italianate house near lake with sailboats and man reading under tree, signed on rock's edge LR 'Hall 1867', in original period matched corner gold leaf frame, SS: 16" x 24", OS 20" x 28" fine condition, one corner of fr	\$1,000.00
607	WALL SHELVES - Pair of 19th C walnut wall shelves with applied carved and gilded eagles, heavy molded and shaped top with acanthus carved, scroll work back, spread wing, opposing face eagles hoding shields, 13"H x 12"D x 7"W, good condition.	\$350.00
608	STUDENT LAMP - Polished solid brass electrified studen lamp with original milk glass shade, 21"H x 8"DIA, good condition.	\$275.00
609	AREA MAT - 3'8" x 6' - Oriental area mat with four medallions on brick red field, geometric designs in ivory, pumpkin and taupe, heavy wear.	\$425.00
611	OOO - Ladies boating party and island picnic, nineteen ladies in three row boats, three figures and camp fire, fine Hudson River School coloration, in original molded plaster on wood gold painted frame with floral and fruit corners, SS: 21" x 27", OS: 30"	\$1,300.00
613	LAMP - Late 19th C Gone with the Wind lamp with matching milk glass globe, matching scenes depicting maiden with cherubs, brass font mounted on ornate cast metal base, 25"H x 9"DIA, good, all original, never electrified.	\$325.00
614	ICE CREAM SET - Seven piece brilliant cut glass ice cream set, circa 1880-90, consists of one oval tray and six small bowls with deep cut starflake pattern and sawtooth edge, unsigned, tray 12 1/2"H x 8 1/2"W, bowls 5 1/4"DIA, good condition.	\$325.00
615	DESK - English mahogany, three section kneehole desk with nine drawers, circa 1900, green leather inset top with gold embossed trim, ending on Chippendale applied bracket base, 28"H x 48"W x 26"D, old surface, original brasses, very minor veneer loss.	\$500.00
616	OOO - Mountain and lake scene with two figures in boat, man on rock fishing and lady seated on shore, town in distance, 'Mrs Moffett 1883' on reverse, in original fancy gold leaf frame, SS: 18" x 32", OS: 27 1/2" x 41 1/2", fine condition, minor losses to	\$1,000.00
617	SILVER BOXES - Lot of three sterling containers and boxes, #1 - match safe, hand engraved with repousse mermaid, 2 3/8"H x 1 3/8"W, #2 - pendant box, heart form with heavy repousse and hinged top, 1 3/4"H x 1 1/2"W, #3 - rouge box, engraved with hinge on	\$300.00
618	STAND - Circa 1880, Chinese Export, Marble top, rosewood plant stand.	\$100.00
620	BED • Custom made solid cherry pencil post bed, 58•W with tapered octagonal posts and simple shaped headboard, gull frame with cotton lace canopy, natural finish, finest quality, 82•H x 58•W x 80•L, good condition.	\$750.00

621	COLOR LITHOGRAPH - ' Tempest ' by Ronald Frontin (Maine, 1962-) An Artist's Proof depicting a woman standing in a winter field, eyes downcast and long blonde hair blowing in the wind, pencil signed lower right and titled, with a watercolor remarque of the	\$600.00
623	WALL CLOCK - Circa 1900-10, oak cased box regulator by 'Wm Gilbert Co', eight day brass time movement, pressed design on crest and door, paper dial and reverse painted lower glass lettered 'Regulator', 37"H x 15 1/2"W x 4 1/2"D, missing left top to crest,	\$150.00
624	CENTER BOWL - Free blown Loetz style center bowl, studio free blown with clover leaf rim, violet to amber transition iridescent glaze, ground pontil, 3 3/4"H x 11"DIA, good, ground chip on rim.	\$225.00
626	COLOR LITHOGRAPH - 'A Chance to Dream' by Ronald Frontin (Maine, 1962-) An Artist's Proof depicting a cat asleep in a French armchair in scattered sunlight, pencil signed lower left and titled, with a watercolor remarque of the same scene. In a modern m	\$1,200.00
627	JEWELRY BOX - Fine inlaid burl veneered jewelry box, domed square top with highly detailed inlay, sides have applied arch supported by half columns on molded platform base, silk tufted interior with mirror lid, concealed music box, 5"H x 8"W x 8"D, good c	\$175.00
628	DRESSER JAR - Art Nouveau, sterling top, cut glass base dresser jar, heavy repousse top depicting cherub and nymph, monogrammed center, cut ribbed sides with starburst cut bottom, 6"H x 5 1/4"DIA, minor dents in cover, holes in high relief areas of repous	\$375.00
629	TABLE LAMP - Black painted tole Aladdin form table lamp with gilded trim, circa 1930, 16 1/2"H x 8"DIA, minor paint loss.	\$85.00
630	AMOIRE - Blue painted pine armoire with tombstone paneled doors fitted with brass wire over two small drawers having leaf carved pulls and applied bracket base, 89"H x 56"W x 20"D, repainted with an ochre interior. Provenance: From a Damariscotta Maine	\$500.00
631	OOC - View of Ruins of Southwestern Adobe Church, ca 1890, signed Il ' Lansdale Fox ', in original fumed oak panel frame, SS: 16" x 20", OS: 23 1/2" x 27 1/2", overall fine craquelere, repaired puncture lr.	\$1,400.00
632	JARDINIERE ON PEDESTAL - Weller Dickensware two part jardiniere on pedestal, dark brown glazed with hand painted floral design and embossed fern design, 26"H x 12"DIA, good condition.	\$325.00
633	TABLE LAMP - Circa 1910 Carmel slag glass panel lamp with six panel shade and cast art nouveau frame, on matching base with double electric fixture, 23"H x 17"DIA, good condition.	\$275.00
634	DINNER SERVICE - Forty-five piece fine Limoges dinner service, contemporary white with blue and pink design depicting flamingos, 'Flamants Roses' pattern by Bernardaup Limoges, set consists of 8 cups, 8 saucers, 8 dessert plates, 8 bread plates, 8 dinner	\$1,200.00
635	CUPBOARD - Circa 1810 Pennsylvania poplar and white wood jelly cupboard with a large deep top drawer over two recessed panel drawers with mushroom knobs and a nicely cut out and shaped bracket base, 47"H x 43"W x 19"D, fine , original scrub finish. Prove	\$500.00
636	OOC LAID ON BOARD - Pastoral Scene with Sheep by C. Grant Davidson (NY, 1865-1945), ca 1890, signed lower right, in original gilt gesso Victorian cove frame, SS: 6 1/2" x 8 1/2", OS: 11" x 13", very good condition, losses to frame.	\$800.00
637	SHELF CLOCK - Round polished copper Waterbury, eight day ship's bell clock with a jeweled movement, on a mahogany block stand, 5 1/2"DIA x 4"D, light wear to numbers 1,2,3,4, running condition.	\$200.00
638	MECHANICAL BANK - Late 19th C cast iron Tammany mechanical bank, seated figure with moveable arm and nodding head, black jacket, yellow vest and green sides, 6"h x 3"W x 4 1/4"D, good, original paint approx 80%.	\$350.00

639	TABLE LAMPS - Pair of 20th C porcelain figural lamps depicting busts of Napoleon and Josephine, unglazed figures on glazed pedestals atop beaded edge brass plinths, on black marble bases, 14"H x 5 1/2"W x 5 1/2"D, good, minor chips on marble bases	\$300.00
642	PIANO BABY - Circa 1900, German bisque, hand painted piano baby depicting an infant in stretching pose in front of chair, loose night shirt with one sock marked 'GH', 13"H x 5"W x 5 1/2"D, good, minor paint rubs.	\$350.00
643	FOLDING SCREEN - Three panel self standing, circa 1900, folding screen, painted oil on canvas with three oval scenes depicting fairy tales, floral and scroll decorations on ivory background, fabric covered back with large dome head tacks, 63 1/2"H x 18"W	\$375.00
644	VASES - Pair of Lenox 'Masterpiece Vase' vases, hand decorated with 24K gold and raised floral design, 8 1/4"H x 5"DIA, perfect condition.	\$70.00
645	SETTEE - Circa 1900, bench made replica of a Queen Anne settee with finely carved mahogany cabriole legs resting on a pad foot, in a gold brocade fabric with down cushion, 41"H x 47"W x 28"D, fine, minor discoloration spots on fabric. Provenance: From a	\$900.00
647	SEWING MACHINE - Portable Singer model 221 sewing machine, comes with machine, foot pedal, attachments and owner's manual, in original carry case, 11"H x 14"W x 8"D, good condition.	\$225.00
648	SEWING MACHINE - Portable Singer model 221-1 sewing machine, comes complete with machine, foot pedal, attachments, owner's manual, bobbin spools and lubricant, 11"H x 14"W x 8"D, good condition.	\$325.00
649	DESSERT SET - Eleven piece fine porcelain dessert set marked 'Dresden', set consists of triangular center bowl and ten matching dessert plates, hand painted in a floral design with birds and gold highlights, 11 1/2"DIA bowl, 7 1/2"DIA plates, good conditi	\$175.00
650	PARLOR SUITE - Three piece mahogany framed upholstered, assembled parlor suite, consisting of a wing chair, arm chair and ottoman, both chairs have ball and claw feet while the ottoman has ball feet, all covered in a brick red and blue Persian style tapes	\$450.00
651	OOC - Brown and black cows watering, signed LR 'Boss 1878', in original period matched corner gold leaf frame, SS: 8 1/2"H x 11 1/2", OS: 16" x 19", fine untouched condition.	\$1,000.00
652	MIRROR - Circa 1875, Victorian red walnut, tombstone shaped pier mirror with gold trim, carved and gilded crest, 62"H x 27"W x 3"D, perfect condition.	\$475.00
653	MINIATURE BRONZES - Pair of Austrian cold painted bronze Toucans, bright painted tails and bills with gray back and white breast, heads cocked to left, 3 1/2"H x 6 1/4"L, good, minor paint flakes.	\$750.00
654	VASE - Carved cameo case glass vase attributed to Webb, leaf and vine design over white to rose colored surface, narrow neck over ovoid base, 9"H x 5"DIA, good condition.	\$450.00
655	WARDROBE - French scrub pine two door wardrobe with three interior shelves and single drawer base on turned ball form feet, 71"H x 40"W x 19"D, natural waxed finish, minor wood bore damage. Provenance: From a Damariscotta Maine estate.	\$650.00
656	OOP - Oil on panel of a recumbent cat with a blue background, Circa 1964, set in a period lemon gold frame, SS: 21"H x 27"W, OS: 25 1/2"H x 31 1/2"W, oil in fine condition, frame has some retouch work. Provenance: From a Damariscotta Maine estate.	\$700.00
657	ARCHITECTUAL - Four sections of handmade Chinese Chippendale pattern lattice work in white painted pine in 1"D X 1 1/2"W stock, Circa 1920, #1 - 122" X 41", #2 - 121" X 33", #3 - 121" X 59", #4 - 121" X 68", structurally fine, paint flaking.	\$600.00

658	RUNNER - 3' x 13' 7" - Circa 1910-20 NW Persia, hand made runner with butterscotch field, floral designs in blue, green, rose and ivory, good condition, runner was adjusted and contoured to room.	\$700.00
659	TABLE LAMP - Brass and marble base, column form table lamp, frosted etched glass shade with prisms along rim, triple electric fixture, 31"H x 12"DIA, good, some mismatched replacement prisms.	\$500.00
660	LIBRARY TABLE - Solid mahogany Queen Anne style library table, shaped and molded edge top with a central oval inlaid panel in burl and mahogany, burl inlay on outer edge of top, nicely formed cabriole legs ending on a pad foot, 30 1/2"H x 48"W x 25"D, fin	\$350.00
661	OOO - Male and female with parasol sitting on rocks, overlooking the sea, initialed LR 'JMD 1886', in original fancy matched corner gold leaf frame, SS: 12" x 20", OS: 20" x 28", fine, untouched condition.	\$850.00
662	CHANDELIER - Three light ceiling mount gas fixture, two arms with central light, simple brass frame in rope twist pattern, comes with central milk glass ribbed shade and two matching ruffled edge milk glass shades, and two hand blown chimneys, 48"H x 28"W	\$250.00
663	WINDOWS • Pair of full length wooden framed multi paned stained glass windows, two large central clear panels surrounded by red, blue, violet and amber side lights, pegged mortise & tenon construction, 84•H x 25•W x 1 1/2•D, frames good, missing four clea	\$450.00
664	COMPOTE - Meissen porcelain bowl on pedestal depicting three maidens, incised no 2685, 9 3/4"H x 5 1/4"DIA, old repair to one thumb, minor chips on flowers on base.	\$600.00
665	PARLOR SUITE - Three piece Victorian walnut framed upholstered parlor suite, consists of two hip rest side chairs and one large arm chair, upholstered in an old floral tapestry fabric, ornate shaped frame with applied burl walnut highlights, two chairs ha	\$300.00
667	SUGAR SHAKER - 19th C English hallmarked sugar shaker, London 1887, reticulated top with prominent finial, repouse draped wreath and melon ribbed body on matching footed base, 8 3/4"H x 3/4"DIA, good, wear from polishing.	\$600.00
668	URNS • Pair of 19th C hand carved Carrera marble classical form urns with wide rolled top rim, melon form on square pedestal base, 17•H x 15•DIA, chips around bases, 1 pedestal cracked through.	\$400.00